

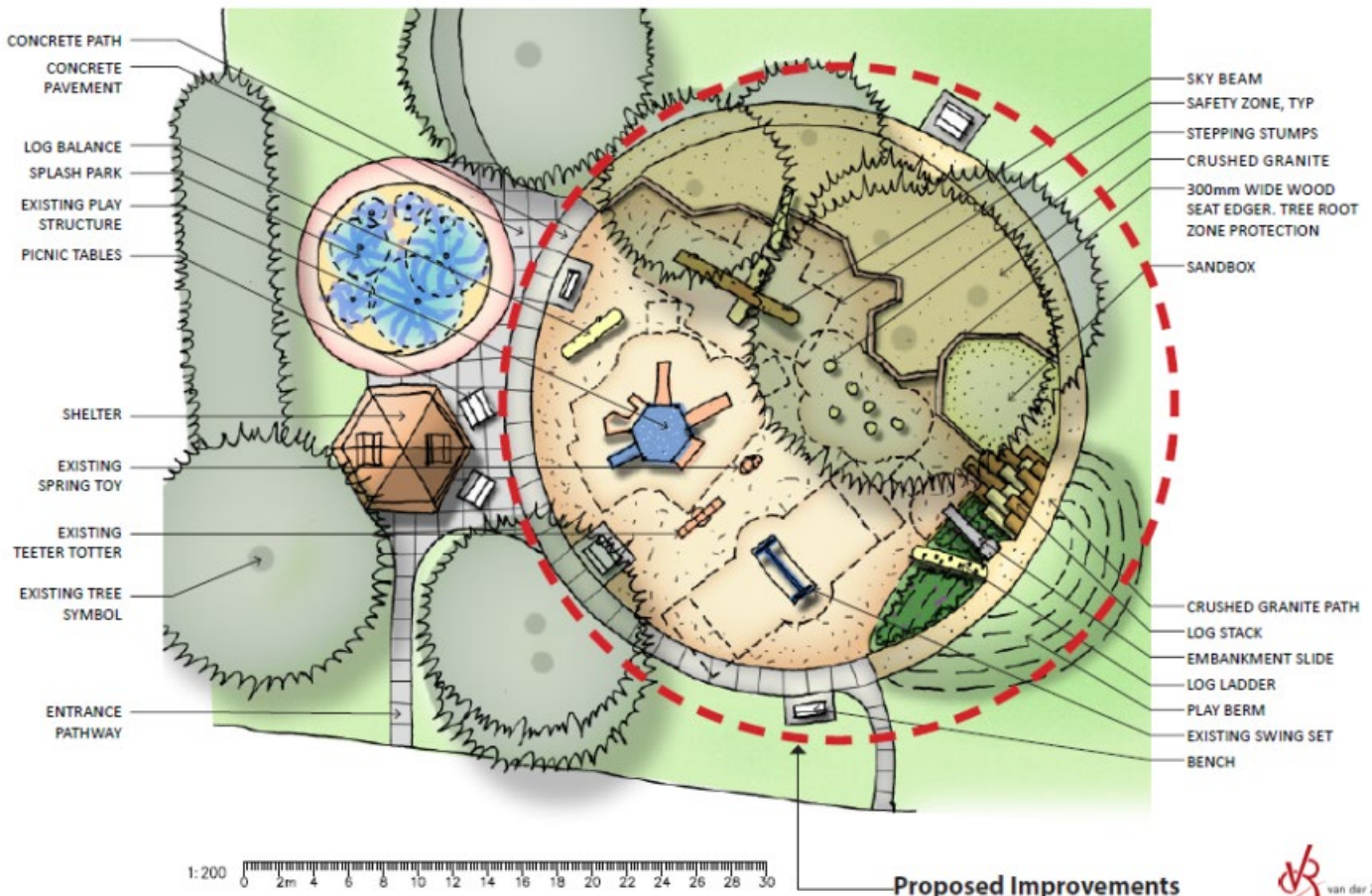
INFORMATION BULLETIN

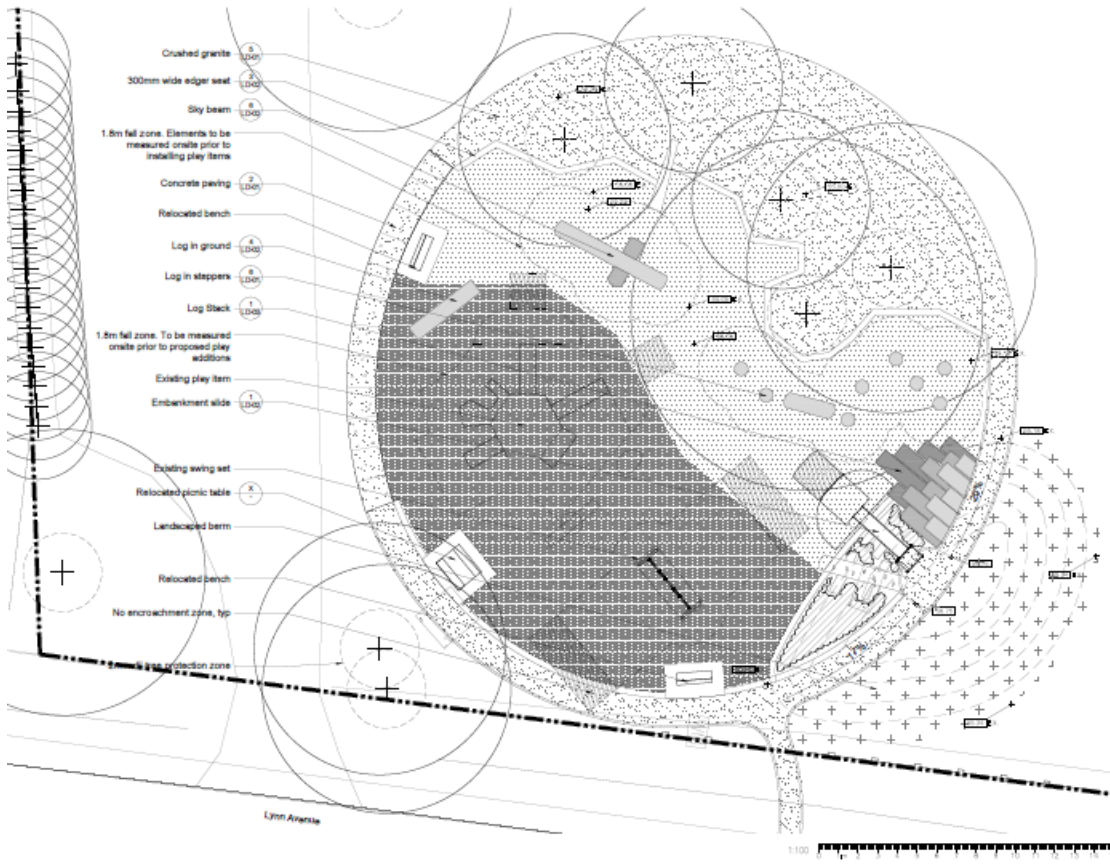
Adventure playground planned for Hoon Park

ABBOTSFORD – July 23, 2019: The City of Abbotsford has partnered with Archway Community Services on the development of the Hoon Park Adventure Playground.

The existing playground at Hoon Park will be transformed into an inclusive and creative space with natural play elements such as a hillside slide, a log ladder, play berm, log stacks, log balances, and stepping tree stumps. Nature Playgrounds are designed with natural elements such as logs, tree stumps, boulders and bark mulch. Research has shown that children who play in nature are healthier, happier, smarter, and more positive.

This playground upgrade project is a partnership between Archway Community Services and the City of Abbotsford. A park opening celebration will be planned for Fall 2019. Funding was provided by Archway Community Services, Saputo Inc., and the Grayross Foundation, held at the Vancouver Foundation.





LEGEND

KEY	REF.	DESCRIPTION
[Pattern]	2 LD-ST	CONCRETE SLAB
[Pattern]	5 LD-ST	CRUSHED GRANITE
[Pattern]	6 LD-ST	WOOD REFER TO LANDSCAPE SPECIFICATIONS
[Pattern]	3 LD-ST	WOOD FRAME
[Pattern]		WOOD FRAME TOP UP EXISTING
[Pattern]		PROPOSED CONTOUR
[Pattern]		RELOCATED/PROPOSED TABLE
[Pattern]		RELOCATED BENCH
[Pattern]	8 LD-ST	STAIRCASE BOLLARDS OPTIONAL BOLLARDS
[Pattern]	9 LD-ST	300MM WIDE EDGER
[Pattern]	4 LD-ST	LOG STACK
[Pattern]	7 LD-ST	SKY BEAM
[Pattern]		EXISTING TREE
[Pattern]	5 LD-ST	LOG LAZARUS
[Pattern]	1 LD-ST	EMPALEMENT BLOCK
[Pattern]	2 LD-ST	WOOD PATCH
[Pattern]		SPOT SALVATION
[Pattern]	1 LD-ST	SHEDS
[Pattern]		PROPERTY LINE

Project information will be posted to the City website at www.abbotsford.ca/hoonpark

For more information contact:
 Alex Mitchell
 Public Affairs Officer
 E: amitchell@abbotsford.ca
 T: 604-751-3092