

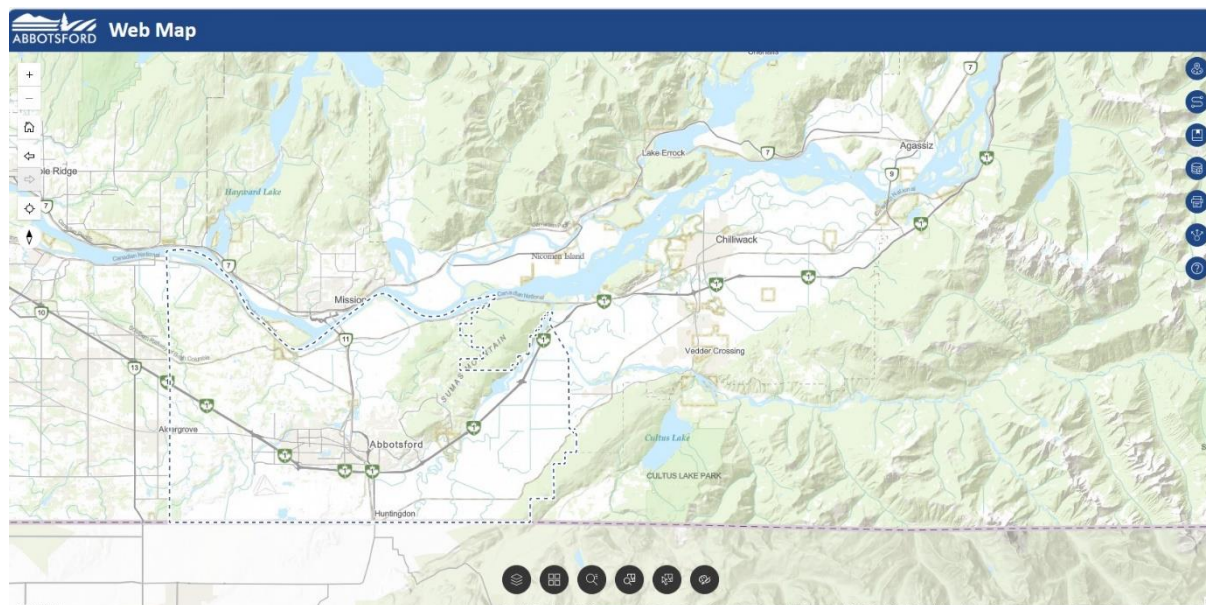
CITY OF ABBOTSFORD WEBMAP | FAQ

What is Web Map?

Web Map is the City of Abbotsford's interactive mapping tool, allowing an interactive geographic data experience built on the [Esri ArcGIS Experience Builder](#) platform.

Users can:

- View details on properties and relative Development, Engineering, Environment, Parks and Transportation datasets.
- Visualize and highlight adjacent Parcels and Easements.
- Measure and draw figures adding text labels for creating printable maps.
- Web Map can be accessed through the City website at abbotsford.ca/webmap.



Widgets

Toolbar

How do I get started?

Web Map gives you access to layers of information that are part of the City GIS (Geographic Information System).

Custom Tools and Widgets provide you with ability to interact and search for data.



Widgets

Near Me: Find and analyze features within a specified distance of a defined location.

Follow Me: View and record your location and movement.

Bookmark: Pre-configured layer views for Utilities and Parks. Ability to save custom Bookmarks that are retained in your browser cache.

Add Data: Temporarily add data sources to an app at run time. You can add data from ArcGIS content, a URL, or local storage including formats: SHP, CSV, KML, GeoJSON, GPX.

Print: Print web maps. The widget includes options for previewing extents, selecting layouts, and more.

Share: Allow end users to share the app using a variety of methods.

Help & About: Information to support use of the Web Map.

Toolbar



Map
Layers

Basemap
Gallery

Search

Quick
Find

Select

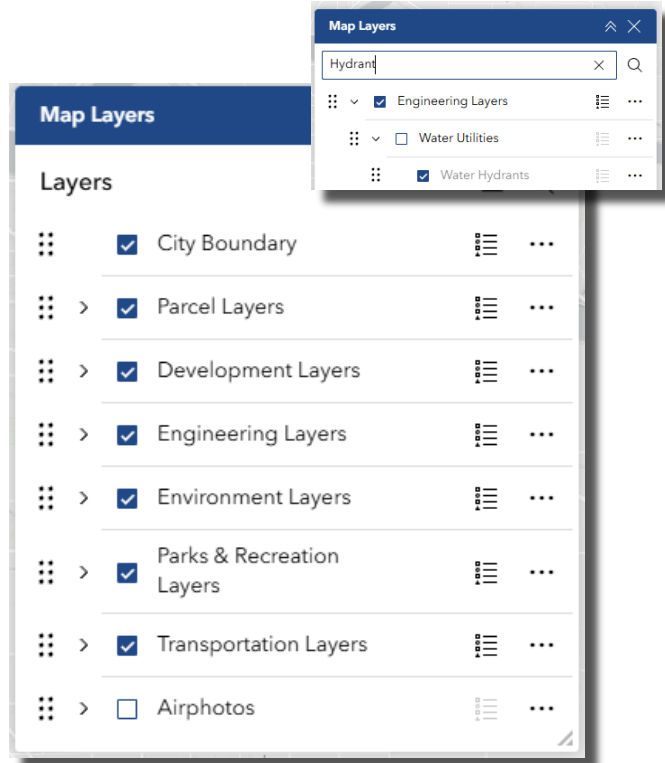
Draw &
Measure



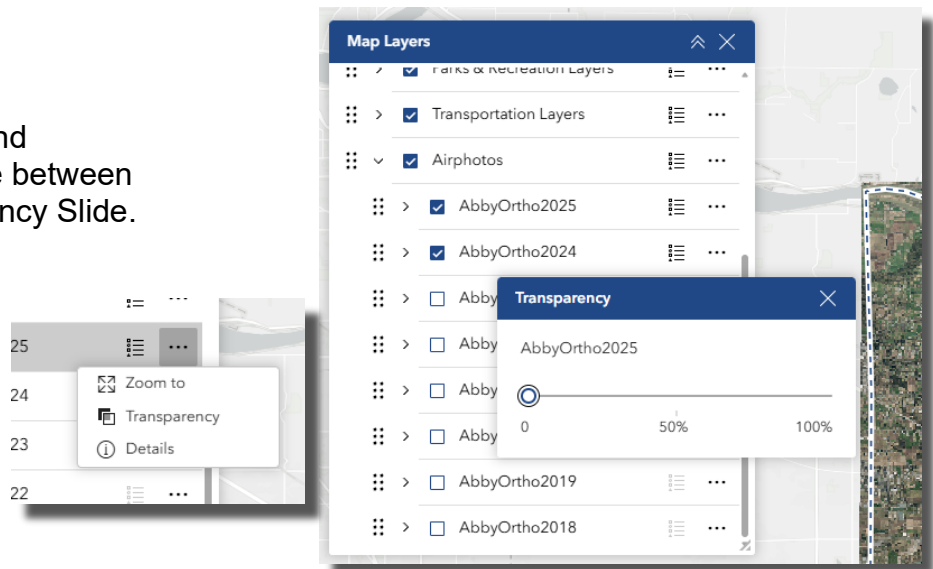
What are Map Layers?

Map layers give specific information about a property or area. You can clearly see City infrastructure themed on different layers. You can select which layers you want to view overlaid on the map.

Navigate through the Map Layers Widget or search for Layers using the Magnifier.



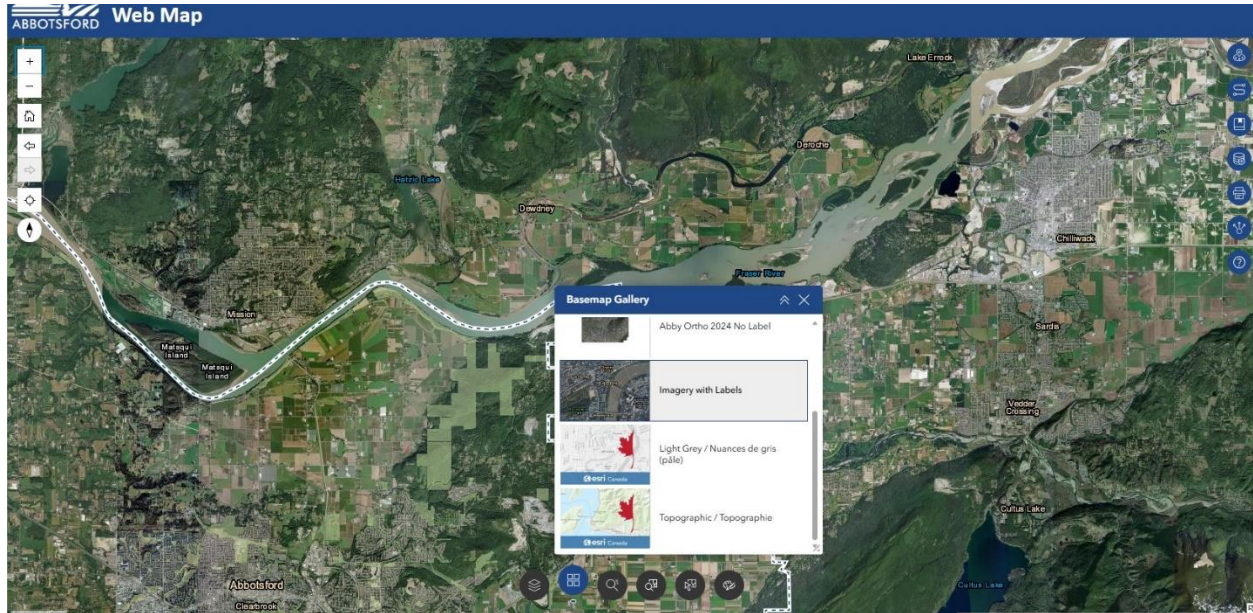
You can Access Current and Historic Imagery. Compare between years utilizing a Transparency Slide.





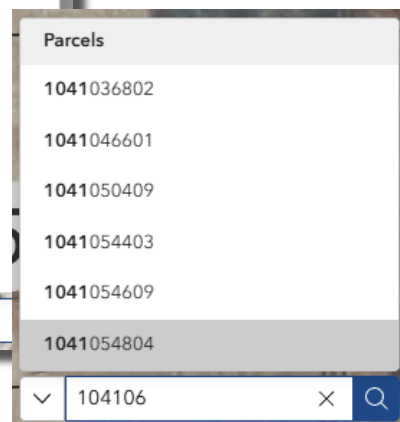
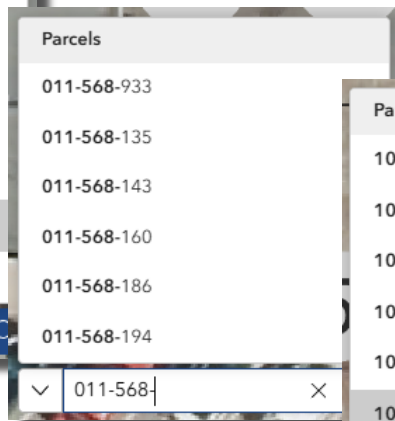
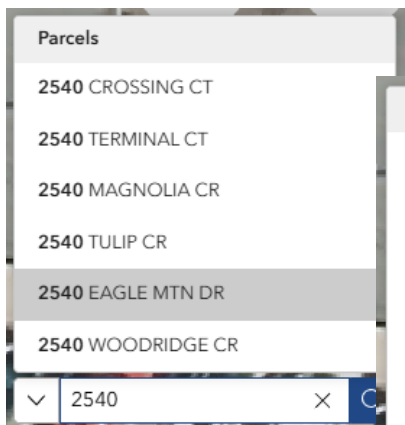
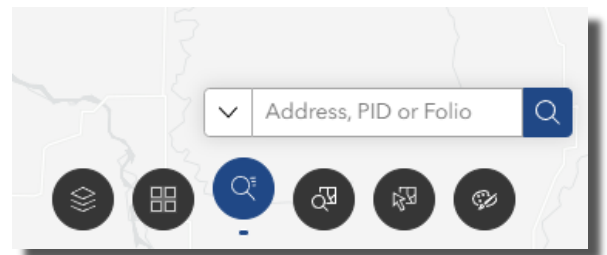
What is the Basemap Gallery?

This feature allows you to change the background of the map to customize your view.



What does the Search menu do?

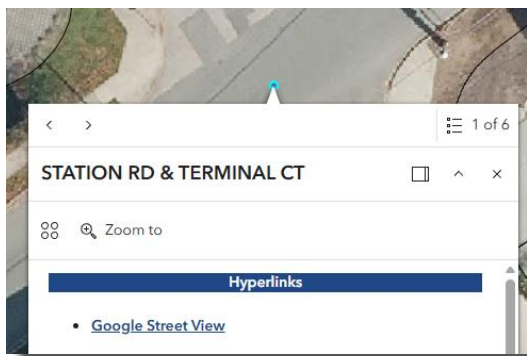
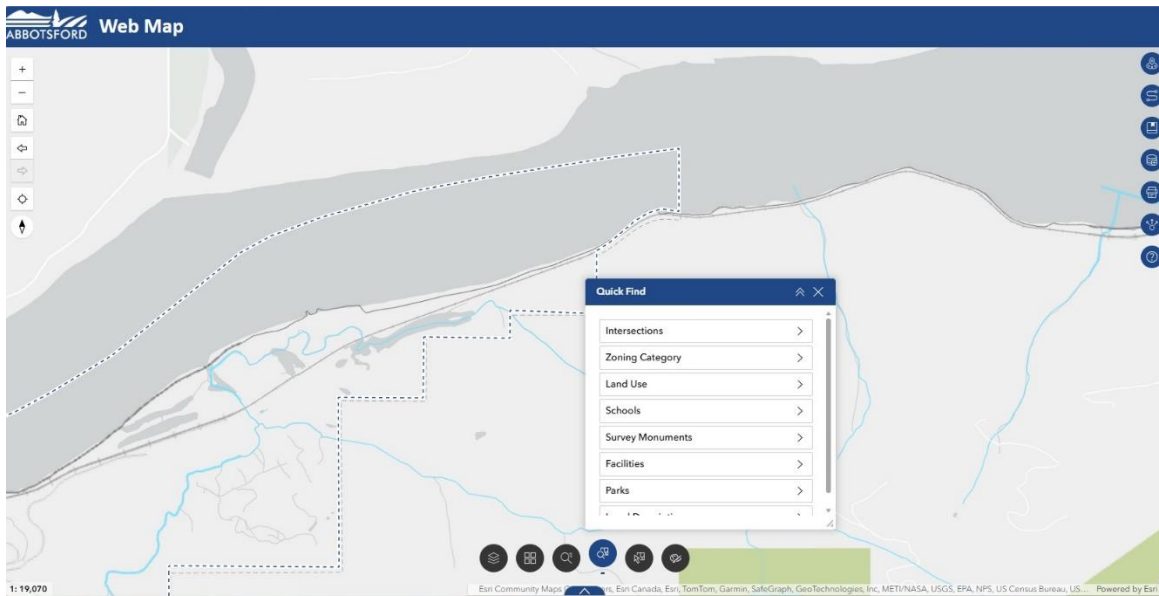
With the Search function you can quickly find an address, PID or Folio with autos-suggestions.



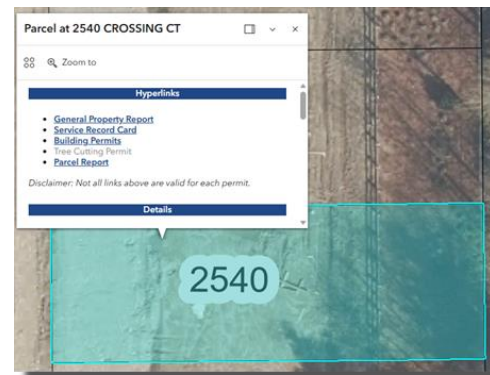


What does the Quickfind function do?

The Quickfind function allows you to quickly find a location by a variety of popular topics including Intersections, Zoning and Land Use.



Intersections link to Google Street View.



You can select a Parcel to display associated information related to Planning and Land Use.



You can access a detailed General Property Report through active links.



What does the Select function do?

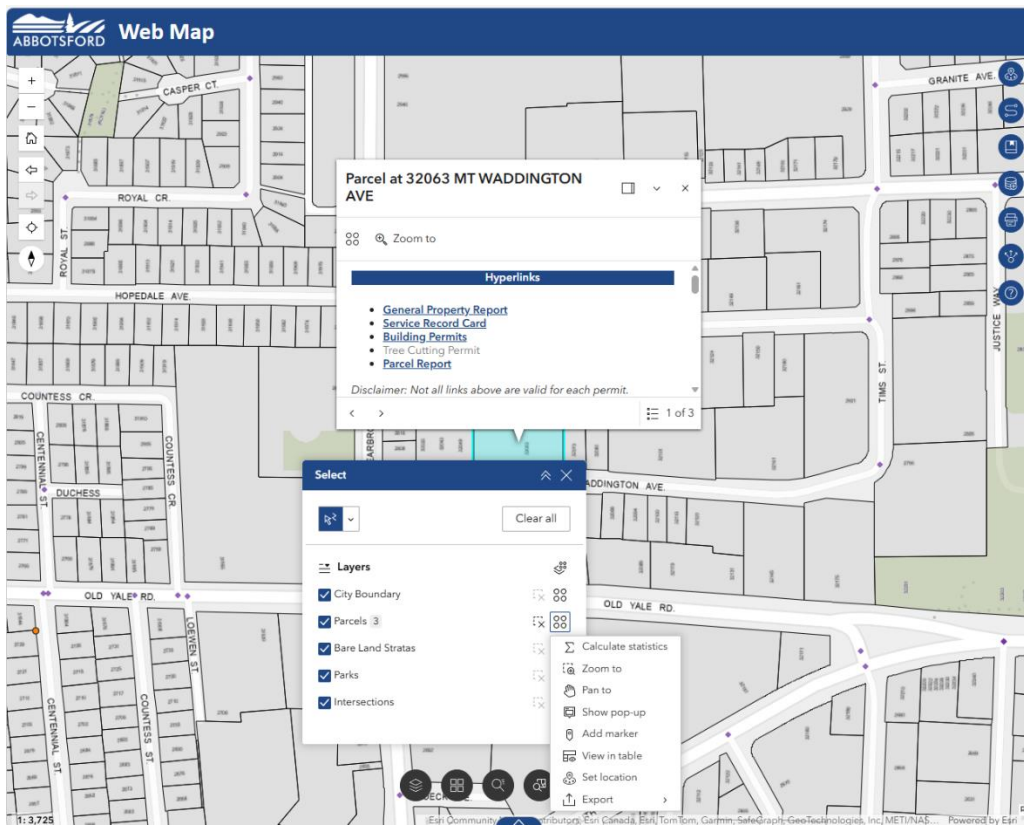
The **Select widget** lets end users **interactively select features on a map or from a list** and then **drive actions** in the rest of the Experience.

In short, it answers:

“Which features do you want to work with right now?”

Selected features can then:

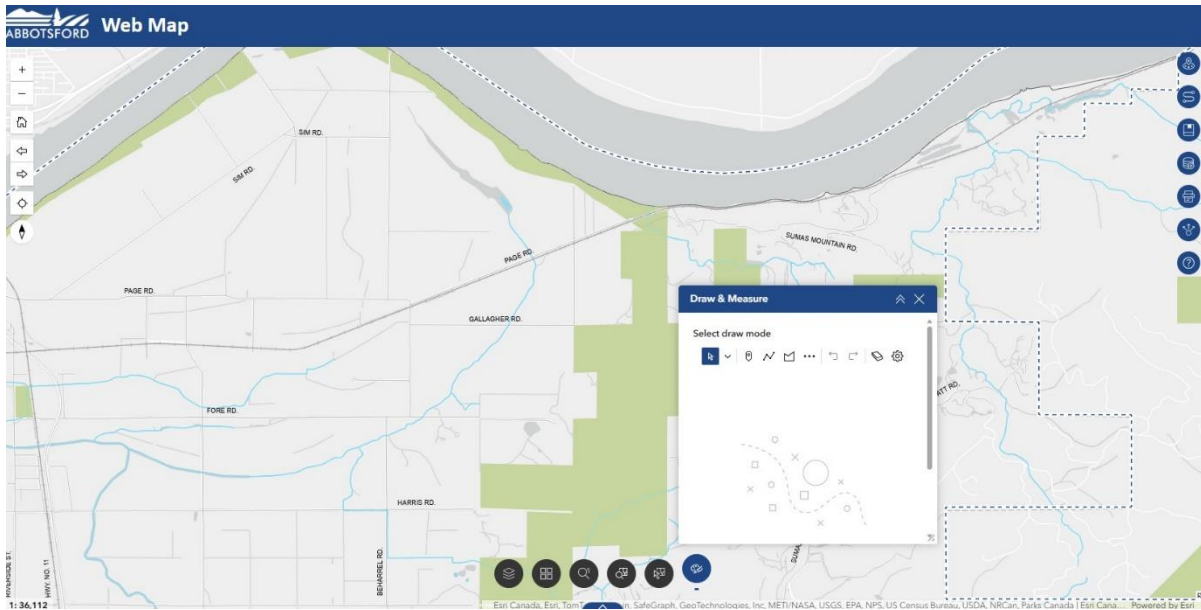
- Populate Attribute Tables or show in pop-ups to scroll through details
- Calculate available statistics for summary
- Zoom/highlight or Export the selections





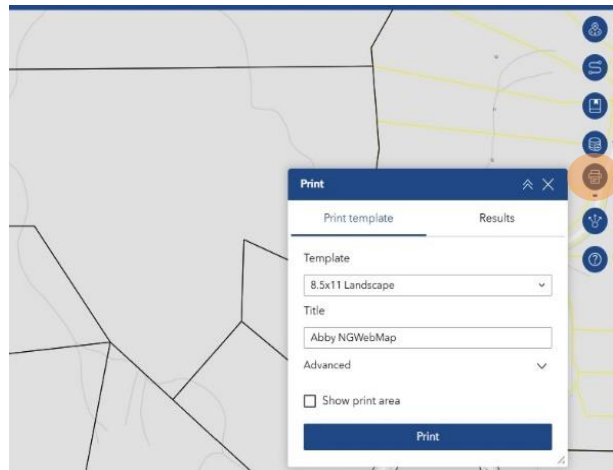
What does the Draw and Measure function do?

The Draw and Measure function has tools for drawing on the map window, such as adding a shape or text. You can add points, lines, areas and text and enable measures and coordinates.



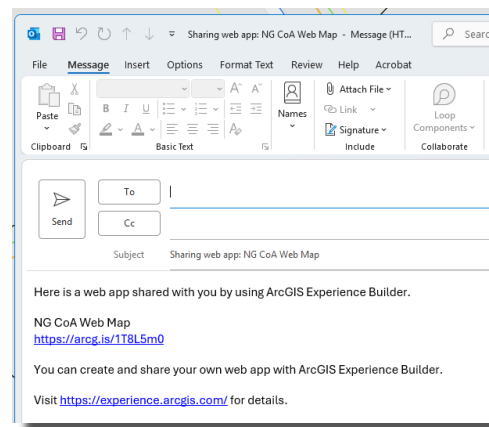
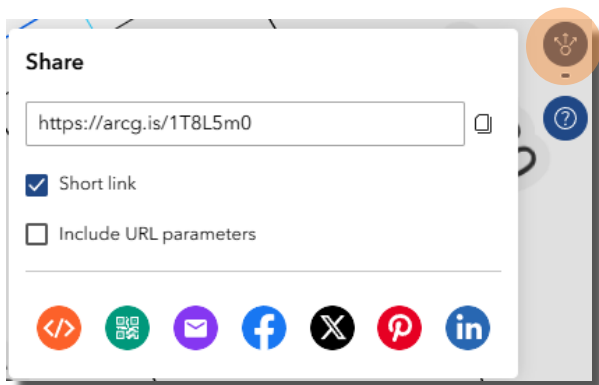
Can I print a map?

With the Print Widget you can select a size and orientation template, export and print material with customized preferences.



Can I share a map?

With the Share Widget you can export and share material via a configured email link.



Can I get help if I need it?

Yes, Use the Help & About Widget for more information, a help guide and support contact to email any comments or concerns to our Web Map staff

