



Tax Rates Bylaw, 2026

Bylaw No. 3727-2026

The Council of the City of Abbotsford, in open meeting assembled, enacts as follows:

PART 1 - INTERPRETATION

Interpretation

1. (1) The *Interpretation Bylaw* applies to this bylaw.
- (2) The classifications of land use set out in Column 1 of each Table have the same meaning as in the *Prescribed Classes of Property Regulation*, B.C. Reg. 438/81.
- (3) Unless otherwise specified, tax rates set out in this bylaw are expressed per 1000 dollars of taxable value.

Definitions

2. In this bylaw,
 - “**Abbotsford Downtown Business Improvement Area**” has the same meaning as in the *Abbotsford Downtown Business Improvement Area Bylaw, 2025*;
 - “**Matsqui Prairie Dyking Area**” means the area shown as "Zone A" in Appendix A;
 - “**Matsqui Prairie Dyking, Drainage, and Irrigation District**” means the Matsqui Prairie Dyking Area and all zones shown in Appendix B;
 - “**Sumas Prairie Dyking and Drainage Area**” means the areas shown in Appendix C;
 - “**Sumas Prairie Irrigation Area**” means the areas shown in Appendix D;
 - “**Urban Storm Drainage Area**” means the area shown in Appendix E.

PART 2 - PROPERTY TAXES

Municipal Police taxes

3. To provide for all lawful General Municipal Police purposes of the City, the tax rates set out in Column 2 of Table 1 are imposed and levied for the year 2026 on the assessed value of land and improvements taxable for general municipal police purposes according to the land use classification set out in Column 1 of Table 1.

General and Debt Servicing taxes

4. To provide for all lawful General and Debt Servicing purposes of the City, the tax rates set out in Column 3 of Table 1 are imposed and levied for the year 2026 on the assessed value of land and improvements taxable for general municipal purposes according to the land use classification set out in Column 1 of Table 1.

Regional Library taxes

- 5. To provide for Regional Library purposes, the tax rates set out in Column 4 of Table 1 are imposed and levied for the year 2026 on the assessed value of land and improvements taxable for regional library purposes according to the land use classification set out in Column 1 of Table 1.

Fraser Valley Regional Hospital District taxes

- 6. To provide for the City's taxing obligations in relation to the Fraser Valley Regional Hospital District, the tax rates set out in Column 5 of Table 1 are imposed and levied for the year 2026 on the assessed value of land and improvements taxable for hospital purposes according to the land use classification set out in Column 1 of Table 1.

Fraser Valley Regional District taxes

- 7. To provide for the City's taxing obligations in relation to services requisitioned by the Fraser Valley Regional District, the tax rates set out in Column 6 of Table 1 are imposed and levied for the year 2026 on the assessed value of land and improvements taxable for regional district purposes according to the land use classification set out in Column 1 of Table 1.

Abbotsford Downtown Business Improvement Area

- 8. For the purposes of the Abbotsford Downtown Business Association, a local service tax of 0.167276% is imposed and levied for the year 2026 on the net taxable assessed value, for general purposes, of all land and improvements on class 5 and class 6 properties within the Abbotsford Downtown Business Improvement Area, other than land and improvements that are exempt under the *Community Charter* or another Act in relation to the tax.

**Table 1 - 2026 Property Tax Rates
(per 1,000 dollars of taxable value)**

Column 1 Land Classification	Column 2 General Municipal (Police)	Column 3 General Municipal (Other)	Column 4 Fraser Valley Regional Library	Column 5 Fraser Valley Regional Hospital District	Column 6 Fraser Valley Regional District
Class 1 - residential	1.08284	1.78296	0.08582	0.11583	0.08836
Class 2 - utilities	14.67449	24.16245	1.16306	0.40539	0.30927
Class 3 - supportive housing	1.08284	1.78296	0.08582	0.11583	0.08836
Class 5 - light industry	2.00418	3.30000	0.15885	0.39381	0.30043
Class 6 - business and other	2.43385	4.00749	0.19290	0.28377	0.21649
Class 8 - recreational property/non-profit organization	2.03239	3.34646	0.16108	0.11583	0.08836
Class 9 - farm	11.98686	19.73709	0.95006	0.11583	0.08836

PART 3 - MATSQUI PRAIRIE DYKING, DRAINAGE AND IRRIGATION DISTRICT TAXES

Matsqui Prairie Dyking, Drainage and Irrigation District taxes

9. To provide for the purposes of dyking, drainage and irrigation within the Matsqui Prairie Dyking, Drainage and Irrigation District,
 - (a) a tax rate of 0.71196 is imposed and levied for the year 2026 on the assessed value of land and improvements for general purposes within the Matsqui Prairie Dyking, Drainage and Irrigation District,
 - (b) a parcel tax of \$28.00 per acre is imposed and levied in respect of all land in the Matsqui Prairie Dyking Area,
 - (c) a parcel tax of \$9.33 per acre is imposed and levied in respect of all land in Zone 2 as shown in Appendix B,
 - (d) a parcel tax of \$32.71 per acre is imposed and levied in respect of all land in Zone 3 as shown in Appendix B, and
 - (e) a parcel tax of \$35.13 per acre is imposed and levied in respect of all land in Zone 4 as shown in Appendix B.

PART 4 - SUMAS PRAIRIE DYKING, DRAINAGE AND IRRIGATION DISTRICT TAXES

Dyking and drainage taxes

10. To provide for the purposes of dyking and drainage within the Sumas Prairie Dyking and Drainage Area,
 - (a) the tax rates as set out in Column 2 of Table 2 are imposed and levied on the assessed value of improvements for general purposes within the Sumas Prairie Dyking and Drainage Area according to the land use classification set out in Column 1 of Table 2,
 - (b) a parcel tax of \$36.74 per acre is imposed and levied in respect of all land in Zone A as shown in Appendix C, and
 - (c) a parcel tax of \$23.12 per acre is imposed and levied in respect of all land in Zone B as shown in Appendix C.

Table 2 - Sumas Prairie Dyking and Drainage Tax Rates

Column 1 Land Classification	Column 2 Tax Rate
Class 1 - residential	0.58353
Class 2 - utilities	12.04840
OIC Class 2 - utilities	12.04840
Class 3 - supportive housing	0.58353
Class 5 - light industry	9.61620
Class 6 - business and other	4.80812
Class 8 - recreational property/non-profit organization	0.58353

Irrigation taxes

11. To provide for the purposes of irrigation within the Sumas Prairie Irrigation Area,
 - (a) a parcel tax of \$21.31 per acre is imposed and levied in respect of all land in Zone 1 as shown in Appendix D,
 - (b) a parcel tax of \$7.14 per acre is imposed and levied in respect of all land in Zone

2 as shown in Appendix D, and a parcel tax of \$23.99 per acre is imposed and levied in respect of all land in Zone 3 as shown in Appendix D.

PART 5 - URBAN STORM DRAINAGE

Service established

- 12. The administration, operation, inspection and repair of a storm drainage system for the impounding, conveying and discharging of surface and other waters within the Urban Storm Drainage Area is established as a service of the City.

Service fees

- 13. (1) For properties with improvements having a value exceeding \$5 000, service fees set out in Column 2 of Table 3 are imposed and levied for the year 2026 on the assessed value of land taxable for general purposes according to the land use classification set out in Column 1 of Table 3.
- (2) For properties with improvements having a value not exceeding \$5 000, service fees of 0.05162 per 1 000 dollars of taxable value are imposed and levied for the year 2026 on the assessed value of land taxable for general purposes.


Table 3 - Urban Storm Drainage Service Fees

Column 1 Land Classification	Column 2 Properties with improvements greater than \$5,000
Class 1 - residential	0.11615
Class 2 - utilities	0.05162
Class 3 - supportive housing	0.11615
Class 5 - light industry	0.20650
Class 6 - business and other	0.21940
Class 6 - primary, middle and secondary schools	0.11615
Class 8 - recreational property/non-profit organization	0.05162
Class 9 - farm	0.05162

Citation

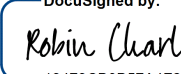
- 14. Bylaw No. 3727-2026 shall be cited as "Tax Rates Bylaw, 2026".

READ a first time this	28 th day of	April 2026
READ a second time this	28 th day of	April 2026
READ a third time this	28 th day of	April 2026
ADOPTED this	12 th day of	May, 2026

DocuSigned by:

 C75E4133867149D...

Ross Siemens

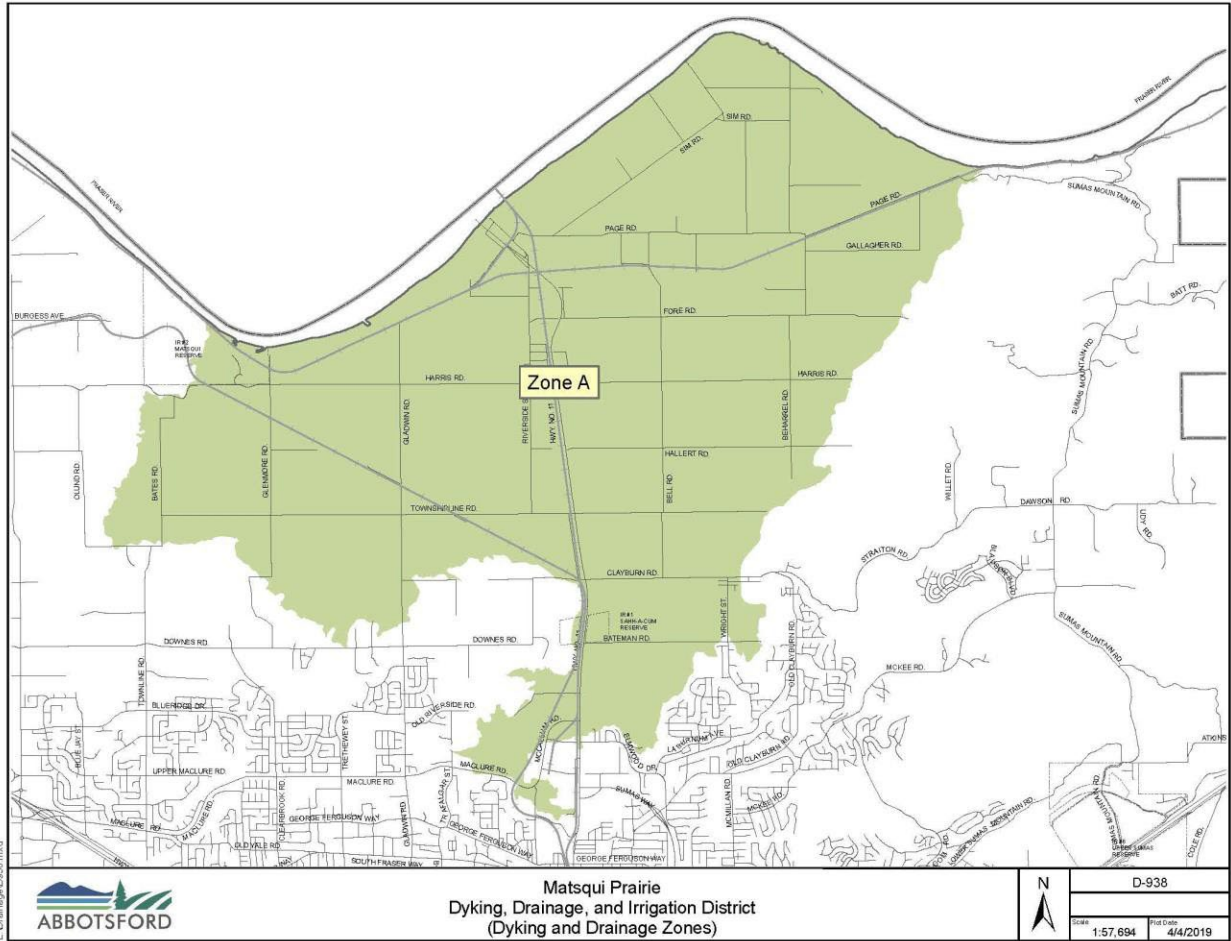
Mayor

DocuSigned by:

 13473GB0B57A4F2...

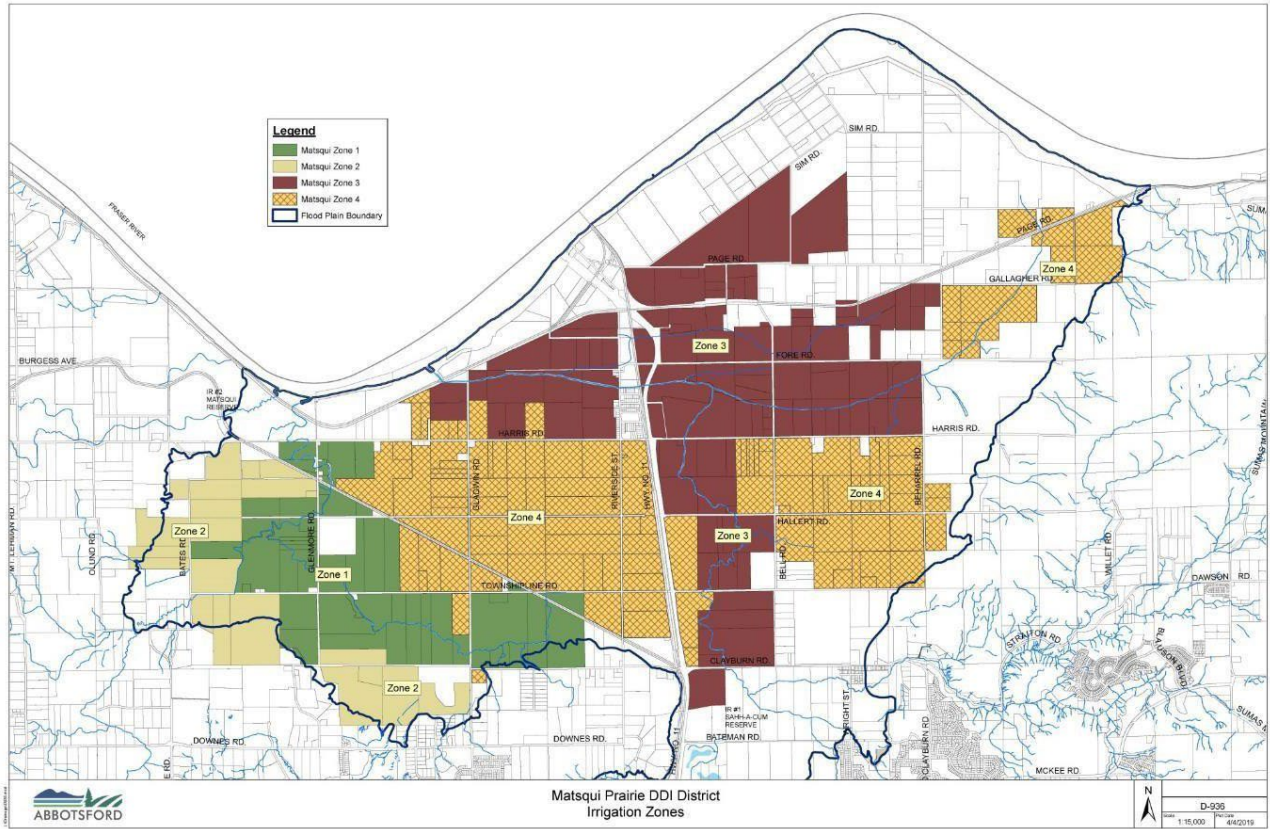
Robin Charl

City Clerk

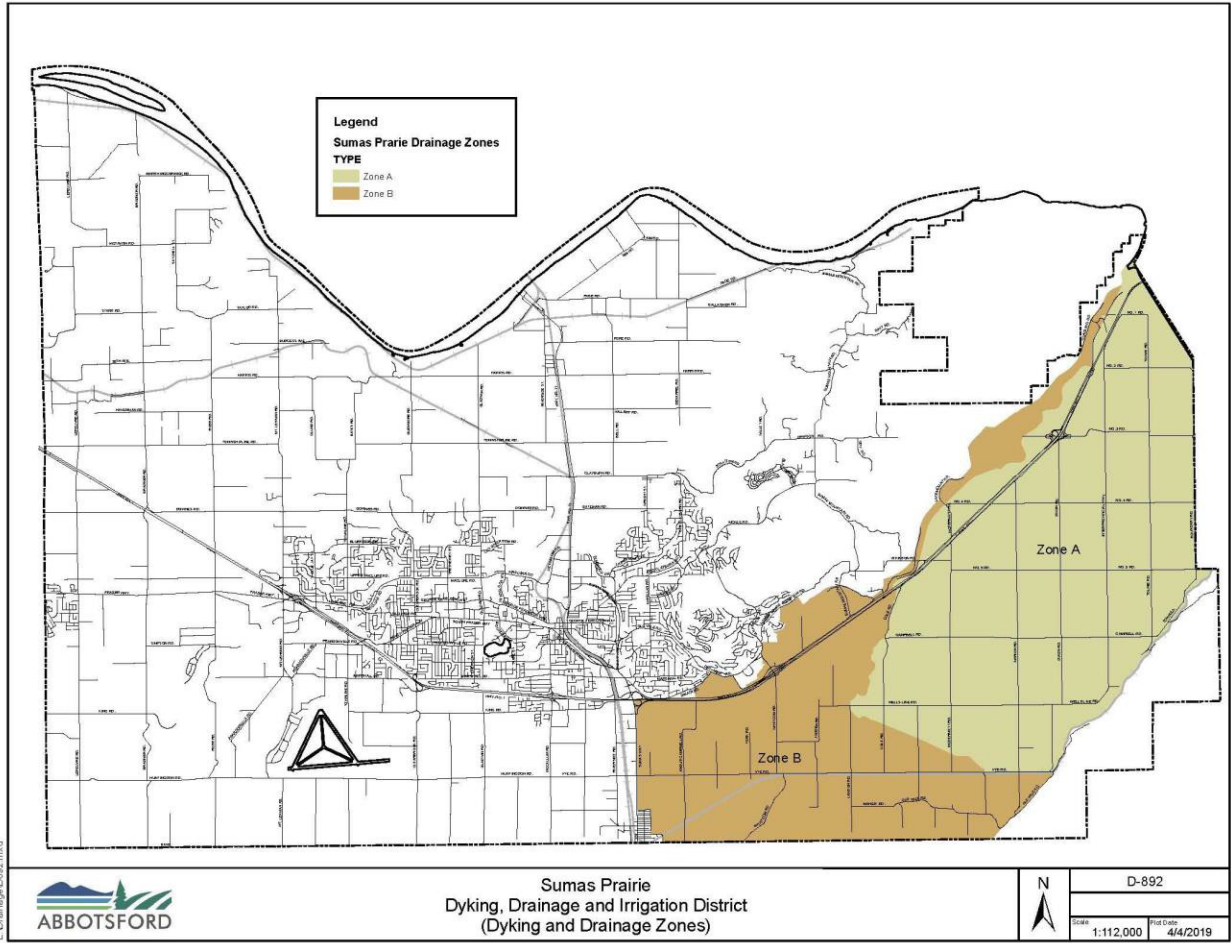
APPENDIX A - MATSQUI PRAIRIE DYKING AREA



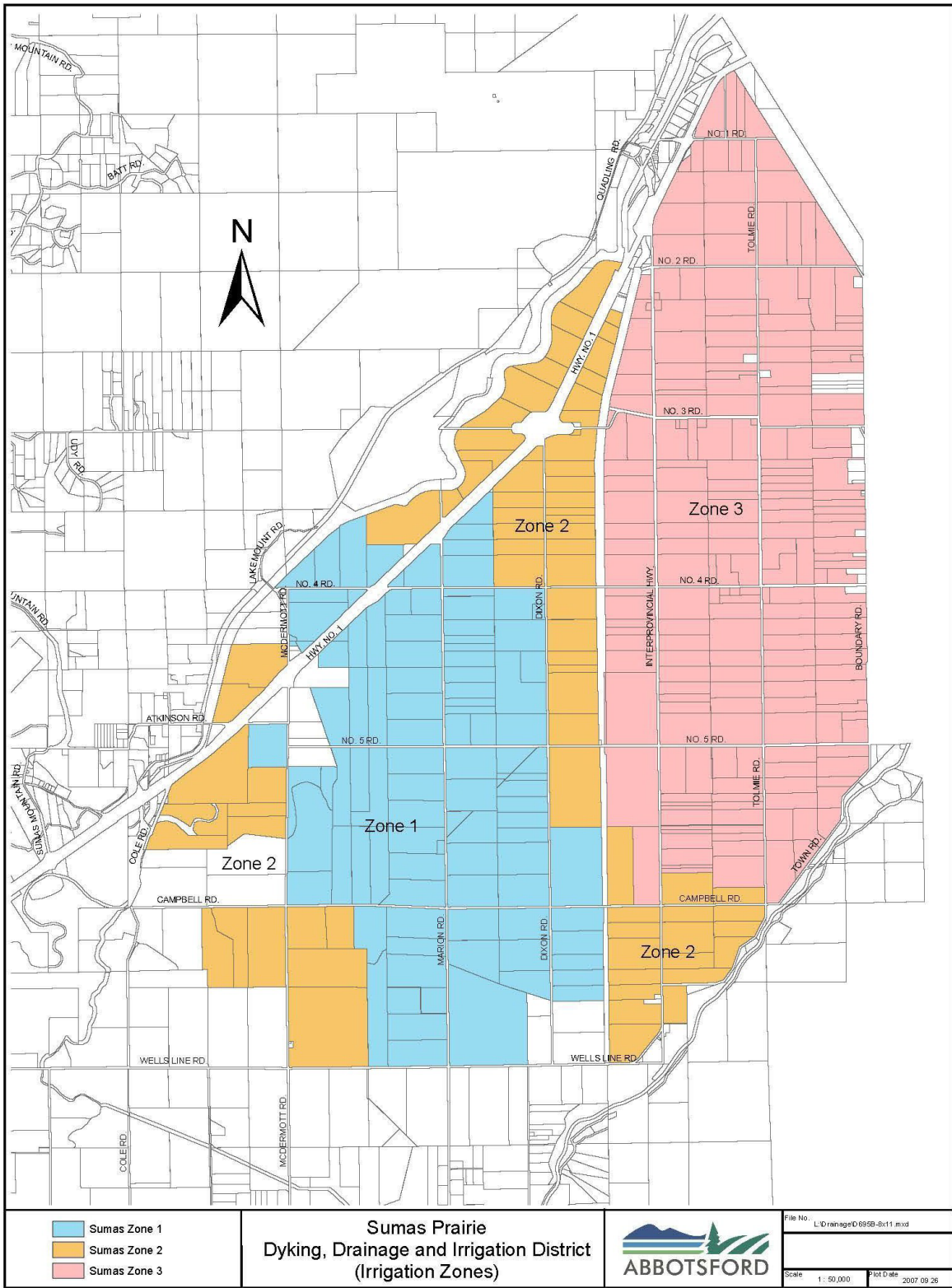
APPENDIX B - MATSQUI PRAIRIE IRRIGATION ZONES



APPENDIX C - SUMAS PRAIRIE DYKING AND DRAINAGE AREA



APPENDIX D - SUMAS PRAIRIE IRRIGATION AREA



APPENDIX E - URBAN STORM DRAINAGE AREA

