

**MESSAGE**

**FROM ABBOTSFORD CITY COUNCIL**

As Abbotsford City Council nears the end of our 2022-2026 term, I'm pleased to reflect on all we've accomplished over the past year. In 2025 we continued to make progress on our 2022-2026 Strategic Plan, with many priorities advanced or completed. Our 30th anniversary year was also a year of celebration and resilience that saw our community come together in joy, as the Abbotsford Canucks won their first championship, and come together in solidarity to support those affected by December's flood.

One of the most consequential advancements of 2025 was our Official Community Plan update, Abbotsforward 2050. This project was two years in the making and provides a blueprint for how our community will grow over the next 25 years.

Addressing housing and homelessness continue to be among our chief priorities. Last year, Council approved development applications for 1,451 new units and permitted

1,728 more. We strengthened our homelessness response by partnering with BC Housing on a Homelessness Response Leadership Table, and we renewed our federal Reaching Home funding.

As we look back on how far we've come since amalgamation, let us also look forward and reaffirm our commitment to making Abbotsford a vibrant, complete community where everyone is welcome and everyone can prosper.

**Ross Siemens**  
 Mayor



**YOUR COUNCIL IN THE COMMUNITY**

To stay informed on City Council activities:  
[abbotsford.ca/councilinthecommunity](http://abbotsford.ca/councilinthecommunity)



**BUDGET HIGHLIGHTS**

**SOME KEY PROJECTS UNDERWAY**

The City's 2026 budget focuses on sustaining core municipal services and delivering targeted service enhancements aligned with Council's strategic priorities.



**FIRE HALL NO. 6 REPLACEMENT**

Replacing this older fire hall in Historic Downtown will improve safety, efficiency, and response times with modern facilities for today's emergency needs. It supports firefighters and ensures reliable service for a growing community.



**MILL LAKE PARK LOOP IMPROVEMENTS**

Improving the walking path in Mill Lake Park will make it easier and safer for all ages and abilities to stay active and enjoy the outdoors. Enhanced pathways and lighting improve accessibility and create a better experience for the community.



**PARKS INFRASTRUCTURE ENHANCEMENTS**  
 Crossley Park, Gilmour Park, Westridge Park and more

Improving park amenities creates welcoming spaces that encourage people to gather, stay active, and connect. Enhanced features like seating, lighting, washrooms, and play areas improve safety, accessibility, and quality of life.



**MONTVUE/WEST RAILWAY PLAZA**

This new addition to Historic Downtown creates a vibrant outdoor gathering space for relaxing, socializing, and community events. It supports local activity, culture, and year-round use of public space.



**HIGHSTREET TRANSIT EXCHANGE**

The new Highstreet Transit Exchange will make getting around the City easier by improving connections, travel times, and reliability. It creates a safer, more accessible hub supporting sustainable transportation.



**ROAD AND INFRASTRUCTURE IMPROVEMENTS**

Investments in roads and sidewalks improve safety and mobility while reducing costly emergency repairs. Using preventative improvements protects assets, reduces costly repairs and stabilizes long-term infrastructure costs. Projects include Mt. Lehman and Downes Road intersection and various crosswalk and sidewalk improvements.

**VIEW OUR FULL LIST OF CURRENT PROJECTS ON THE GO AT [abbotsford.ca/projects](http://abbotsford.ca/projects)**

**QUESTIONS?** Contact us about City services, programs, or your property, and follow the City on social media.

**ABBOTSFORD! LET'S TALK.**  
 Share your input on community projects & plans  
 Give feedback • Take surveys  
 • Stay up to date

[letstalkabbotsford.ca](http://letstalkabbotsford.ca)






**CONNECT WITH US**

604-853-2281  
 32315 South Fraser Way,  
 Abbotsford BC V2T 1W7



-  **FACEBOOK** /CityofAbbotsford | /AbbotsfordPRC
-  **INSTAGRAM** @TheCityOfAbbotsford | @AbbotsfordPRC
-  **X** @City\_Abbotsford | @yxxairport

-  **LINKEDIN** @cityofabbotsford
-  **YOUTUBE** /cityofabbotsfordbc
-  **WEB** [abbotsford.ca](http://abbotsford.ca) | [abbotsfordairport.ca](http://abbotsfordairport.ca)

[abbotsford.ca/report-issue](http://abbotsford.ca/report-issue)  
 SERVICE REQUESTS: @ABBOTSFORDAPP

[abbotsford.ca](http://abbotsford.ca)

**THE HUB OF THE FRASER VALLEY**

# OPTIONS FOR PAYING PROPERTY TAXES

**ALL PROPERTY TAXES ARE DUE THURSDAY, JULY 2, 2026**

**NOTE: TAX PENALTIES APPLIED:**  
 First 5% Penalty Date: JULY 3, 2026  
 Second 5% Penalty Date: SEPT 16, 2026



## HOW TO PAY

### ONLINE

Set up Abbotsford Property Tax as a bill payee through your online banking system and pay as you would any other bill. Search for "Abbotsford" and select the payee with "property taxes". Use the 10 digit folio number from your tax notice as the account number.

### CHEQUE

Payment must be received at City Hall on or before **July 2, 2026**. Payments received after the due date are subject to penalties.

Please make cheques payable to the **CITY OF ABBOTSFORD**. Cheques post-dated to the due date are accepted.

### CREDIT CARD

Credit cards are only accepted for online tax and utility payments and are not accepted in person at City Hall. To pay online visit [abbotsford.ca/creditcard](https://abbotsford.ca/creditcard). A 1.75% service fee will apply.

### TAX PREPAYMENT PLAN

Save for next year's property taxes with preauthorized withdrawals. Spread your bill over 10 monthly payments.

Visit [abbotsford.ca/taxprepayment](https://abbotsford.ca/taxprepayment)



## WHERE TO PAY

### PAY ONLINE

Residents can easily pay property taxes online at any time through a financial institution's website.

### CITY HALL DROP OFF OR MAIL

Cheques for taxes can be mailed or dropped off at a City Hall drop box. There are 2 drop boxes, one at each entrance. **Please DO NOT include cash.** These boxes are emptied daily.

### CITY HALL IN PERSON

**32315 South Fraser Way**  
 City Hall Hours:  
**M - F 8:30am - 4:30pm**  
 (Closed all Statutory Holidays)  
 City Hall accepts the following payment methods: cash, debit card and cheques.

**City Hall is closed on July 1, 2026.**

### YOUR FINANCIAL INSTITUTION

Property taxes can be paid at any Canadian financial institution. Please ensure payment is processed by the due date.

## GRANTS, DEFERRALS AND NEW OWNERS

### NEW OWNERS

New property owners must pay annual taxes by the due date to avoid penalty, even if a tax notice isn't received.

If you haven't received your notice by the second week of June, contact the Property Tax Division at 604-864-5522.

### HOME OWNER GRANT

Apply for Home Owner Grants directly through the Province of BC. **The City of Abbotsford cannot process your Home Owner Grant.**

#### HOW TO APPLY:

[gov.bc.ca/homeownergrant](https://gov.bc.ca/homeownergrant)  
 1-888-355-2700

#### NOTE ABOUT THE GRANT:

The homeowner grant threshold in 2026 is \$2,075,000. The grant is reduced by \$5 for each \$1,000 of assessed value over the threshold. Basic Grant is eliminated at \$2,189,000. Additional/Senior Grant is eliminated at \$2,244,000.

### TAX DEFERMENT PROGRAM

You may qualify to defer your taxes on your principal residence if you meet the provincial program criteria.

**PLEASE NOTE:** The interest rate terms for the property tax deferral program have changed.

#### FOR INFORMATION AND TO APPLY:

[gov.bc.ca/propertytaxdeferral](https://gov.bc.ca/propertytaxdeferral)  
 1-888-355-2700

**You cannot defer your taxes through the City of Abbotsford.** Do this through the Province of BC, online or by phone.

### TAX BILL QUESTIONS?

Hours M - F 8:30am - 4:30pm  
 Call 604-864-5522  
 Email [cash@abbotsford.ca](mailto:cash@abbotsford.ca)  
 Visit [abbotsford.ca/propertytaxes](https://abbotsford.ca/propertytaxes)



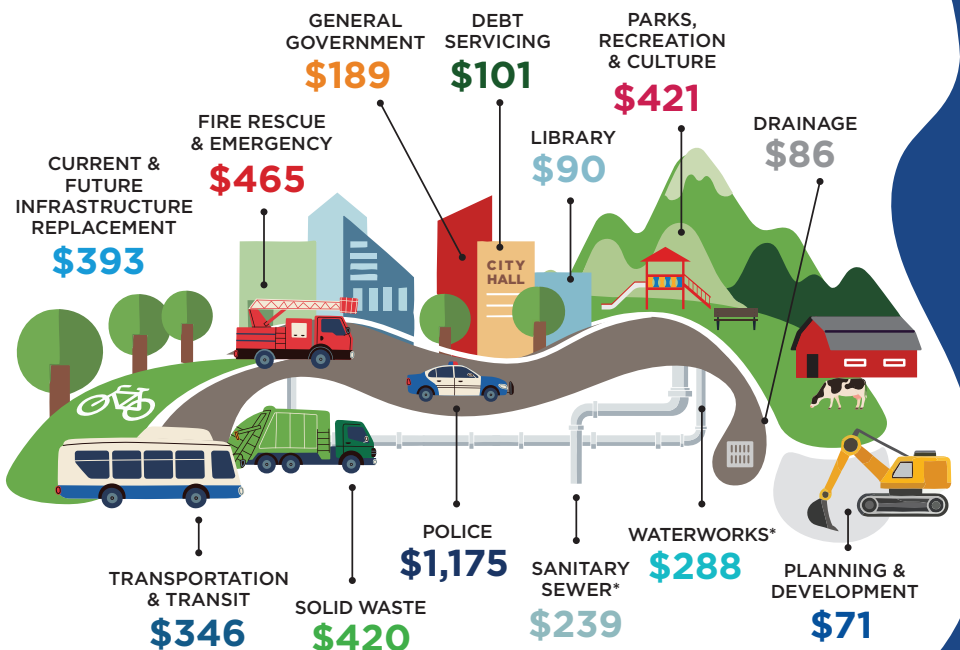
ਇਹ ਖਬਰਨਾਮਾ ਪੰਜਾਬੀ ਦੇ ਵਿੱਚ ਪੜ੍ਹਨ ਲਈ, ਵਿਜ਼ਿਟ ਕਰੋ [abbotsford.ca](https://abbotsford.ca).  
 To read this newsletter in Punjabi, visit [abbotsford.ca](https://abbotsford.ca).

## HOW TAXES SUPPORT SERVICES

This graphic shows how municipal taxes and fees support services and amenities across the community.

Based on 2026 budgeted municipal taxes for a typical single family residence with a 2025 property assessment of \$1,153,000.

**TOTAL: \$4,283. THIS YEAR'S TAX INCREASE IS 4.44% plus 0.50% INFRASTRUCTURE LEVY (TOTAL 4.94%)**



### WHERE YOUR DOLLAR GOES

The City of Abbotsford collects property taxes for the Province of BC and other authorities, including the School District, BC Assessment, Municipal Finance Authority, and Fraser Valley regional and hospital districts. Of each dollar, 35¢ is passed on and 65¢ supports City services.



\*These fees are collected through the bi-monthly and quarterly utility billing and are based on 2025 median single family water usage (207 m<sup>3</sup>).