



Overview of Newcomer Services

Registered in 1969, Archway Community Services is a non-profit, multi-service, multi-funded community based social service agency.

Our Mission

Archway Community Services fosters community well-being and social justice through positive action and leadership.

Our Vision

Justice, opportunities and equitable access for all.

Our Values

Inclusivity, Compassion, Excellence




Newcomer Programs

- Immigrant Settlement
- SWIS
- Career Paths for Skilled Immigrants
- SAFE HAVEN
- Community Connections
- LINC
- Immigrant Youth Services
- Moving Ahead Program
- RAP
- Employment Mentors



Immigrant Settlement Program

Settlement workers facilitate the adaptation process for immigrants and refugees by providing:

- Information
 - Orientation
 - Assessment
 - Supported referrals
 - Education workshops
 - Short-term adaptation counselling
 - Info about societies in British Columbia
 - Guidance & support on personal/family issues
 - Connections to the broader community
- 

SWIS: Settlement Workers in Schools

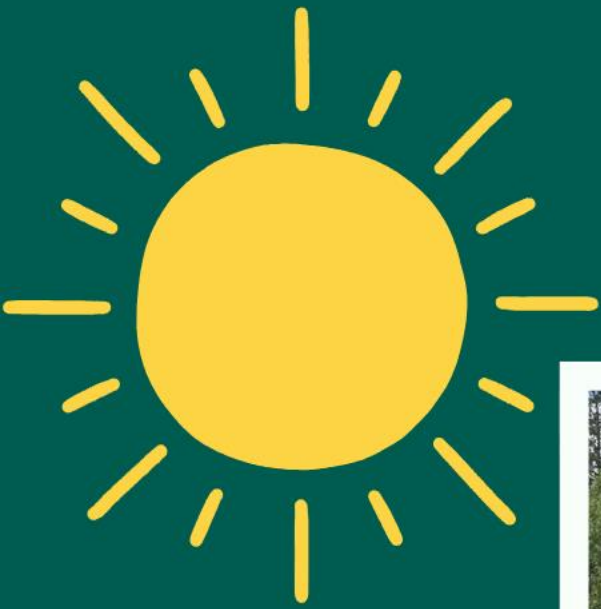
- Help with registration at the assigned school
- School orientation
- Arrange school tours and meetings with the Principal or Counsellor
- General information about the school system & preparation
- Ensuring student's needs and issues are communicated
- Support two-way communication between the family and school



Services are Provided in the Following Languages

- Albanian
- Arabic
- Bosnian
- Cantonese
- Dari
- Dinka
- English
- Farsi
- French
- Hindi
- Japanese
- Korean
- Macedonian
- Mandarin
- Pashto
- Punjabi
- Portuguese
- Russian
- Serbo-Croatian
- Spanish
- Swahili
- Taiwanese
- Turkish
- Urdu
- Ukrainian
- Vietnamese





Family Fun Day!



SAFE HAVEN

Supporting refugee claimants in the Fraser Valley to adapt to their new community and Canadian society

People We Help

We help people living in the Fraser Valley (Abbotsford, Langley, Mission, and Chilliwack) who are:

- Asylum Seekers (People who are already in Canada and intend to submit a claim for refugee protection)
- Refugee Claimants
- Refugees (Counselling only)
- Ukrainians under CUAET (Counselling only)

Services Available

Settlement Support

Eligibility: Refugee Claimants and Asylum Seekers

Customized Employment Support

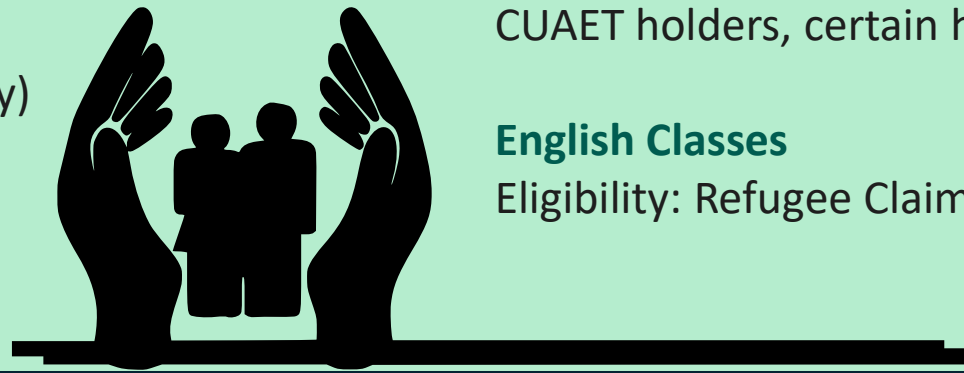
Eligibility: Refugee Claimants

Trauma & Mental Health Counselling

Eligibility: Refugee Claimants, Refugees, Ukrainian CUAET holders, certain humanitarian newcomers

English Classes

Eligibility: Refugee Claimants



Career Path for Skilled Immigrants

Services provided include:

- Financial assistance for credential evaluation
- Licensing and skills upgrading
- Career planning and ongoing support
- Resume revision and employment search support
- Connections to local employers



Community Connections



Conversation Circles

Newcomers can connect with each other, practice speaking English and learn about Canadian culture and their new community from a volunteer.

Citizenship Preparation

These sessions give support as newcomers study for the knowledge test for Canadian Citizenship.

Parenting Life Skills

6-week educational series for newcomer parents to support them in the unique challenges of parenting in a new country.



LINC

Language Instruction for Newcomers

The LINC program aims to improve reading, writing, speaking, and listening skills in English.

Students will learn about Canada, becoming a citizen, politics, history, and geography.

Students learn about working and living in Canada, rights and freedoms, housing, employment, and education.



Immigrant Youth Services



Immigrant Youth Services offers a variety of programs to help newcomer youth integrate into life in Canada.

- Culture Club
- After School Program
- One-on-One




Immigrant Youth Employment and Skills Strategy (YESS)



Moving Ahead Program

Services include:

- Intake and in-home assessment
 - Case management of individual client files
 - Settlement information and counselling
 - Practical assistance & supported access to services
 - Support groups and workshops
 - Life skills, literacy and essential skills development
- 

Resettlement Assistance Program (RAP)

Supporting Government-Assisted Refugees (GARs) and other eligible clients upon arrival in Canada

Services include:

- One on one needs assessment
- Provision of temporary accommodation
- Securing permanent accommodation
- Immediate and essential orientation
- Links to essential federal and provincial programs and services
- Orientation on rights and responsibilities, norms and values as a new Canadian
- Referral to settlement and broader-based community services





Employment Mentors Program

Services for Immigrants Include:

One-on-one mentorship with an experienced professional in your chosen field

One-on-one employment coaching

Employment readiness training

Industry specific networking opportunities

Goal setting and professional development workshops

Employment resource workshops

Access to employment resources and local networks



THANK
YOU!

Please go to www.archway.ca for more info!