

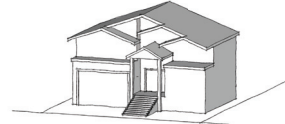
THINKING ABOUT THE BROADER CONTEXT

WHICH OPTIONS WOULD BE APPROPRIATE AS NEIGHBOURHOODS TRANSITION OVER TIME?

Typical Existing Street



Large House
(Current Zoning)



Large House
(Reduced Height and Size)



Duplex



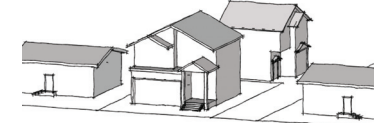
Subdivision with
Conventional Houses
(to 12m lots)



Subdivision with
Narrow Houses
(to 10m lots)



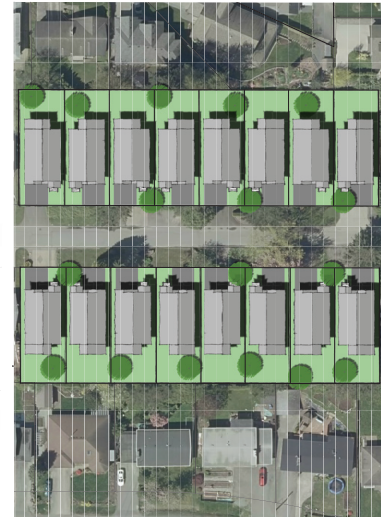
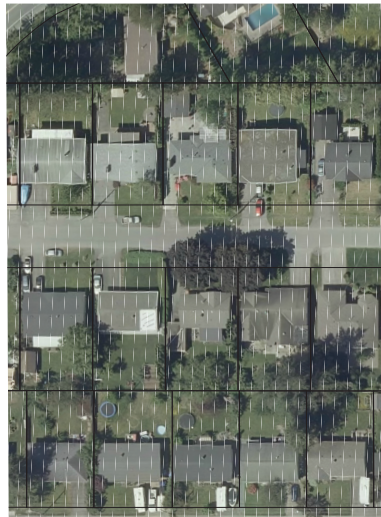
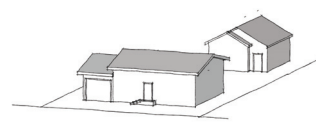
Panhandle Lot



Strata Lots



Garden Suite
(with an existing or new house)



What do you think?

I like the current zoning as it is	I have concerns
------------------------------------	-----------------

I like this option	I have concerns
--------------------	-----------------

I like this option	I have concerns
--------------------	-----------------

I like this option	I have concerns
--------------------	-----------------

I like this option	I have concerns
--------------------	-----------------

I like this option	I have concerns
--------------------	-----------------

I like this option	I have concerns
--------------------	-----------------

I like this option	I have concerns
--------------------	-----------------