

FAQs

City of Abbotsford
WebMap

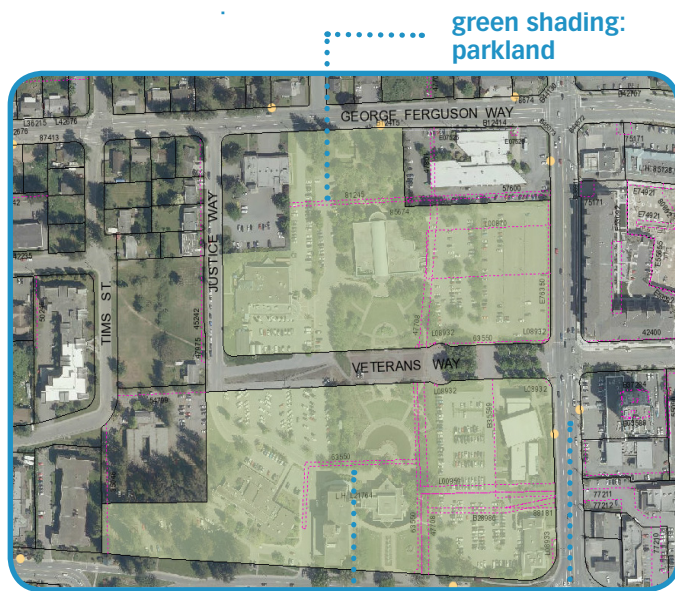
What is WebMap?

WebMap is the City of Abbotsford's interactive mapping tool. It allows the user to:

- view properties showing various layers such as the current Air Photo or city utilities,
- access information such as zoning, land use or the area of a lot
- use tools to determine the distance to the nearest park or school,
- use imagery tools like *Google Street View* and *Pictometry*,

and many more features for both new and advanced users.

WebMap can be accessed through the City website at abbotsford.ca/webmap.



pink dotted lines:
property easments

yellow dots:
bus stops

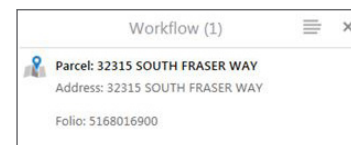
How do I get started?

Use the following tools to get started:

- Use the **"I want to..."** function to start a search. Select the icon to display a drop-down menu of action items, for example **"Search for an address"**.

I want to...

- Select **"Search for an address"** and the left hand side of the screen will update with input fields to add the house number and street name, then click the **"search"** button.
- The left hand panel will update with an interactive **"workflow panel"** with the address and folio information displayed. The right hand panel will display the parcel.

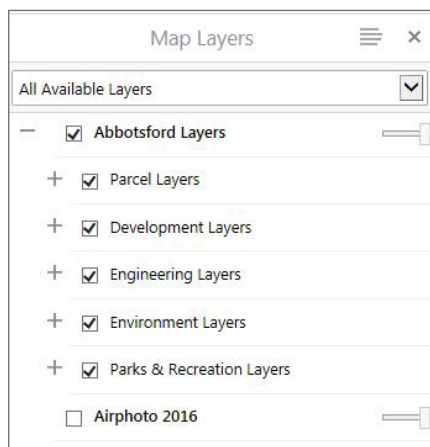


- Select the address in the workflow panel to display basic information regarding the parcel and hyperlinks to additional information such as the utility service record card, building permits, and business licenses.
- If you don't have the address you can also search by Parcel Identifier (PID), intersection or park locations as well as various other search options found under the **Searches** tab on the ribbon at the top of the **WebMap** window. There is also a **"wildcard"** search option at the top right of the screen.

FAQs

City of Abbotsford
WebMap

- **WebMap** gives you access to many layers of information that are part of the City GIS (Geographic Information System).
- Select the **“show available map layers”** from the **“I want to”** drop down list to display available information layers.
- The group layers will display on the left hand side of the screen. Expand the groups by clicking on the **“+”** symbol to display the various types of data layers.



Once the data layers are displayed, click in the check box to toggle the information layer on or off.

Identifying Features

- When you place your cursor any feature on the map (such as a parcel) and right-click, a pop up menu is displayed with a list of action items related to all visible layers (noted above).
- For example, when the first item on the menu **“Find data on the map”** is selected, information for all visible layers will be displayed as links in the results box on the left.
- When one of the **“results links”** is selected, all the attribute data for that feature will be listed in the results window. For instance, the attribute information for a parcel includes zoning, land use description, assessed value, parcel area as well as other types of data.
- There are also hyperlinks available near the top of the attribute list which will lead you to utility service records, building permits and business licenses, if applicable.

What else?

As well as the search tab on the ribbon at the top of the screen in **WebMap**, there are also other tabs with unique tools to process additional information.

- **Create & Share** – tools for exporting information, including printing and producing pdf or jpg files. Download options for geographic data.
- **Markup** – tools for drawing on the map window, such as adding a shape or text before printing or exporting a map.
- **Select & Analyze** – tools for analysis, such as finding an area, obtaining distances or creating a query for analysis purposes.
- **Other Maps** –links to *Google Street View* and *Pictometry*.
- **Feedback** – directly email any comments or concerns to our **WebMap** staff.