



NEWS RELEASE

Construction set to start for new clubhouse and community facility at Ledgeview Golf and Country Club

ABBOTSFORD – September 30, 2019: Abbotsford City Council and the Ledgeview Golf and Country Club Society (LGCCS) are set to move forward with construction on a new clubhouse facility announced Mayor Henry Braun today.

Construction will begin on the new 2-storey clubhouse this November; featuring a 225 seat banquet facility and a large outdoor seating area/deck that will overlook the golf course and provide stunning west facing views of the course and mountains.

The Ledgeview Golf Course is an important City asset and finalizing the Ledgeview Clubhouse project was a 2019 Council Strategic Priority. The total proposed project budget for the construction is \$6.8 million, including \$2.1 million in insurance proceeds from the previous building, with a future contribution of approximately \$3.1 million from the Trans Mountain Expansion Project.

An amended Lease Agreement between the City and the LGCCS will provide a framework for the ongoing management of the new Clubhouse facility and the food and beverage service provider. As part of the agreement, LGCCS will contribute \$200,000 to the construction of the new facility.

Quotes:

“The City of Abbotsford, is extremely pleased to be proceeding with the new clubhouse project with Ledgeview Golf and Country Club Society. The new conference and banquet center will provide more opportunities for Abbotsford to host world-class events in our community.”

*Henry Braun
Mayor, City of Abbotsford*

“The clubhouse reconstruction project represents the beginning of a new chapter in the 57-year history of Ledgeview. I am excited for Abbotsford residents, our charitable partners, and golfers young and old. The new facility will allow us to better serve the needs of this community. Whether it is businesses looking for a place to hold a meeting, charities looking for a place to host a fundraiser, retirees looking for recreation, or junior golfers looking to fulfill their PGA tour dreams as others before them have done; all of Abbotsford benefits from this great announcement.”

*Chris Gaudet
President, Ledgeview Golf and Country Club Society*

Background:

The Ledgeview golf course has been a community asset since 1963. It is consistently rated as one of the top 20 golf courses in British Columbia. Each year, the Ledgeview Golf and Country club hosts tournaments, fundraisers, and provides opportunities for residents of all ages and abilities to learn and play golf.

The Ledgeview Golf Course is owned by the City and is operated by the LGCCS, a not-for-profit society, under the governance of a signed lease agreement. In 2014, the City renewed the lease agreement with LGCCS to operate the facility with the City receiving revenues in the form of rent and profit sharing.

The lease agreement provides the City with competent stewardship of a well-regarded and valued municipal asset, as well as a source of revenue.

In April of 2016, a fire destroyed the Clubhouse at the Ledgeview Golf and Country Club. At that time, the City committed to the LGCCS to rebuild the clubhouse with additional banquet/multipurpose space to better accommodate tournaments and special events at the golf course. A portion of the rebuild of the Clubhouse was to be funded through agreements signed with Trans Mountain.

With a new clubhouse facility now ready to proceed, the City and the LGCCS have come to an agreement on amending the current lease to include provisions for the management and revenue sharing of the food and beverage operations.

Quick Facts:

- The updated Clubhouse project budget is \$6.8 million including a proposed contribution of \$3.1 million from the Trans Mountain Expansion Project
- Construction will start in November, 2019
- The new Clubhouse will include a 225 seat banquet facility and outdoor seating

-30-

For more information contact:

Alex Mitchell

Public Affairs Officer

E: amitchell@abbotsford.ca

T: 604-751-3092

NEW LEDGEVIEW CLUBHOUSE



FOR MORE INFORMATION CONTACT:
projectoffice@abbotsford.ca



NEW LEDGEVIEW CLUBHOUSE



FOR MORE INFORMATION CONTACT:
projectoffice@abbotsford.ca



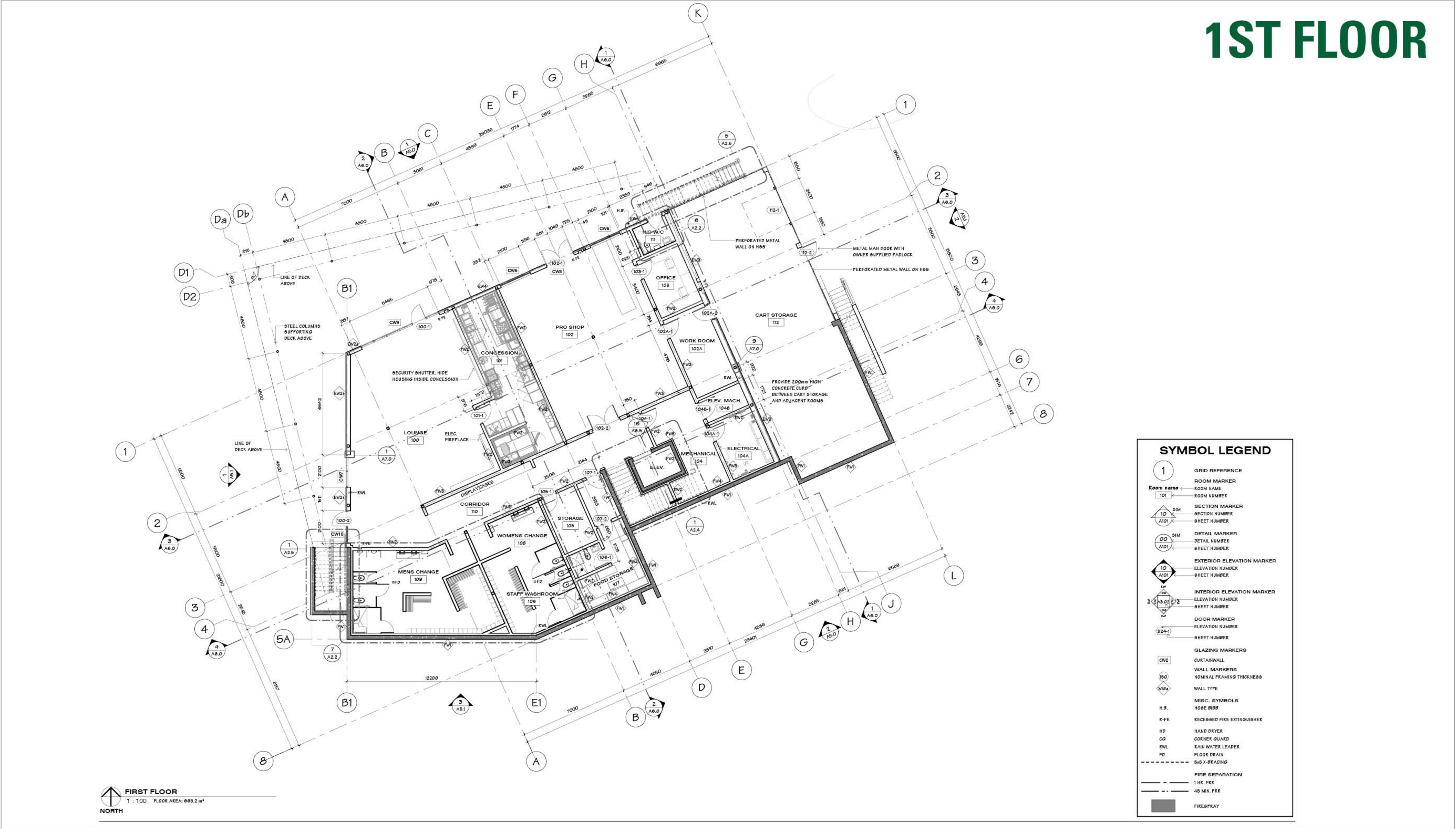
NEW LEDGEVIEW CLUBHOUSE



FOR MORE INFORMATION CONTACT:
projectoffice@abbotsford.ca

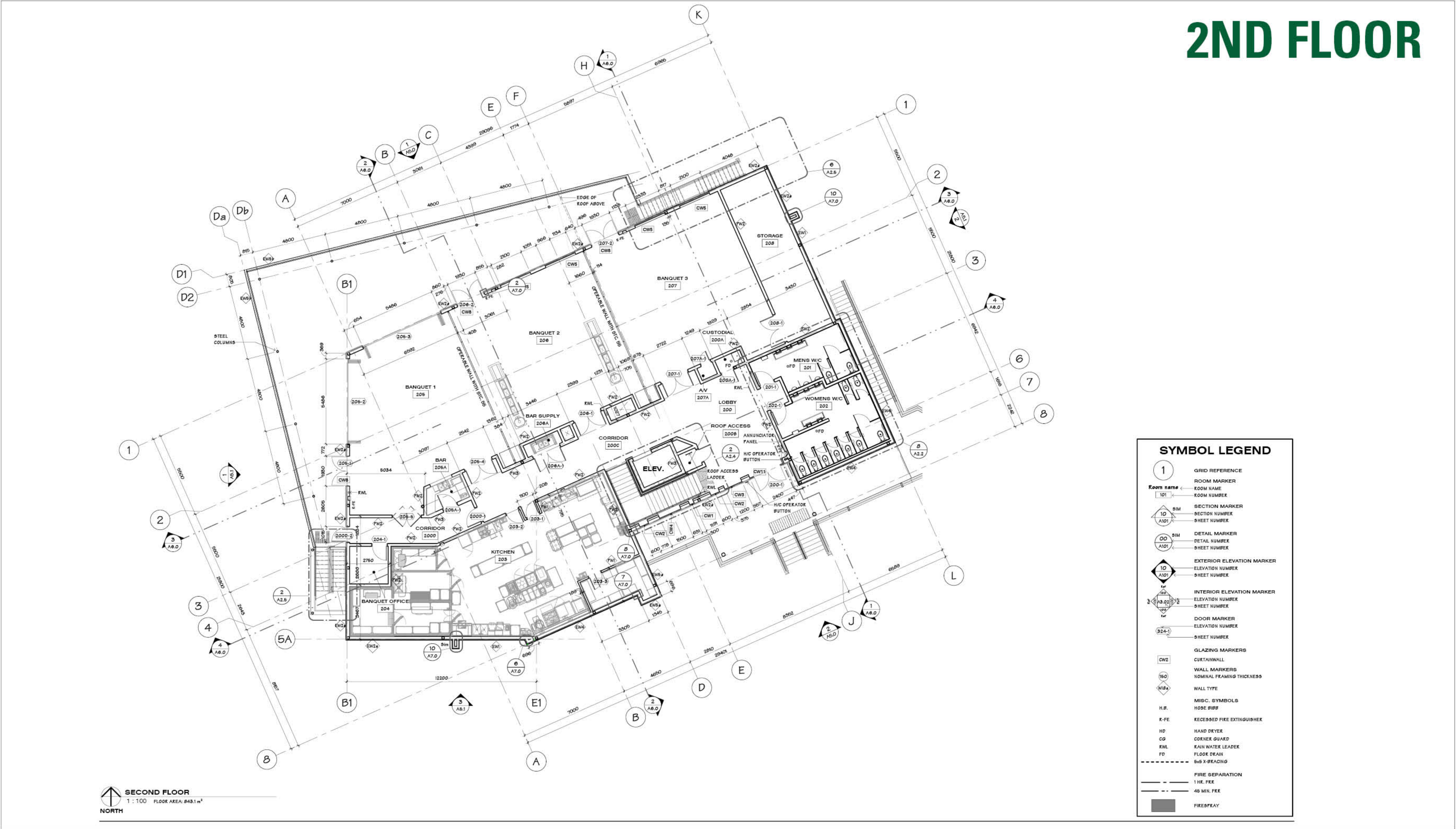


NEW LEDGEVIEW CLUBHOUSE - FLOOR PLANS



FOR MORE INFORMATION CONTACT:
projectoffice@abbotsford.ca

NEW LEDGEVIEW CLUBHOUSE - FLOOR PLANS



FOR MORE INFORMATION CONTACT:
projectoffice@abbotsford.ca

FOR MORE INFORMATION CONTACT:
projectoffice@abbotsford.ca

