

## Abbotsford City

<b>1</b>	<b>General</b>
<p>Incorporated in 1995 (by combining the District of Abbotsford with the District of Matsqui), the City of Abbotsford has a total land area of 359.36 square km (2006 Census). Abbotsford is in the Fraser Valley Regional District.</p>	

<b>2</b>	<b>Population Estimates</b>				<b>Age Distribution</b>				
<b>Annual Estimates</b>					<b>2006 Census</b>			<b>% Distribution, 2006 *</b>	
Year	Abbotsford	% Change Prev. Year	BC	% Change Prev. Year	Abbotsford	Male	Female	Abbotsford	BC
2007	131,250	n/a	4,309,632	n/a	All ages	61,095	62,765	100.0	100.0
2008	133,547	1.8	4,384,047	1.7	0 - 14	12,905	11,995	20.1	16.5
2009	136,031	1.9	4,459,947	1.7	15 - 24	9,265	8,770	14.6	13.1
2010	138,139	1.5	4,529,647	1.6	25 - 44	16,960	17,100	27.5	27.4
2011	139,343	0.9	4,573,321	1.0	45 - 64	14,385	15,170	23.9	28.4
					65 +	7,575	9,735	14.0	14.6

Source: Statistics Canada (as of July 1, includes estimate of Census undercount)

\* based on published totals, both sexes

**2006 Census Profiles can be found on our Website at <http://www.bcstats.gov.bc.ca/census.asp>**

<b>3</b>	<b>Selected Census Characteristics</b>						
			<b>Abbotsford</b>			<b>British Columbia</b>	
Characteristics	2001	2006	% Change	% Change	2001	2006	
Population	115,463	123,864	7.3	5.3	3,907,738	4,113,487	
Population (by citizenship)	113,765	122,175	7.4	5.3	3,868,875	4,074,385	
Non-immigrant	86,110	88,995	3.4	2.9	2,821,870	2,904,240	
Immigrant	27,025	31,955	18.2	10.8	1,009,820	1,119,215	
Labour force (15+ yrs.)	59,240	65,645	10.8	8.1	2,059,950	2,226,380	
Employees	50,030	56,005	11.9	9.2	1,715,600	1,873,050	
Self-employed	7,845	8,535	8.8	7.4	291,455	313,000	
Participation rate [ppt.=percentage points]	67.0%	67.5%	0.5 ppt.	0.4 ppt.	65.2%	65.6%	
Unemployment rate	8.2%	5.5%	-2.7 ppt.	-2.5 ppt.	8.5%	6.0%	
Total population 25 to 64 years	56,985	62,830	10.3	6.5	2,144,050	2,284,465	
No certificate, diploma or degree	16,280	11,205	-31.2	-40.1	471,470	282,200	
High school certificate or equivalent	13,150	19,015	44.6	27.7	462,925	591,275	
Apprenticeship/trades certificate or diploma	7,785	7,795	0.1	-7.4	295,180	273,450	
College, CEGEP or other cert. or diploma	10,025	11,290	12.6	11.3	401,760	447,005	
University certificate, diploma or degree	9,755	13,525	38.6	34.7	512,715	690,535	
Bachelor's degree	4,870	5,880	20.7	23.0	282,800	347,715	
Census families	31,895	34,575	8.4	6.9	1,086,030	1,161,420	
Lone-parent families	4,440	4,880	9.9	4.0	168,420	175,165	
Households	40,115	43,565	8.6	7.1	1,534,335	1,643,150	
1-family households	28,435	29,805	4.8	6.1	1,012,925	1,074,850	
Multi-family households	1,640	2,230	36.0	18.4	35,050	41,510	
Non-family households	10,040	11,530	14.8	8.3	486,355	526,785	
Median Income (2000 & 2005)	\$ 20,335	\$ 22,990	13.1	12.5	\$ 22,095	\$ 24,867	
Males	\$ 27,884	\$ 30,786	10.4	9.0	\$ 28,976	\$ 31,598	
Females	\$ 15,836	\$ 17,888	13.0	14.0	\$ 17,546	\$ 19,997	
Median Family Income (2000 & 2005)	\$ 51,498	\$ 64,089	24.4	20.0	\$ 54,840	\$ 65,787	
Economic Families	30,395	32,510	7.0	6.5	1,044,850	1,112,810	
2001 Incidence, low income    2006 Prevalence, low income	10.9%	11.6%	0.7 ppt.	-0.6 ppt.	13.9%	13.3%	
Unattached persons, 15+	12,250	13,470	10.0	4.7	576,825	603,880	
Incidence, low income	35.3%	35.0%	-0.3 ppt.	-1.4 ppt.	38.1%	36.7%	
Population in private hh.	113,335	121,845	7.5	5.1	3,785,270	3,978,215	
Incidence, low income	13.1%	13.9%	0.8 ppt.	-0.5 ppt.	17.8%	17.3%	
Dwellings	40,115	43,565	8.6	7.1	1,534,335	1,643,150	
Owned	28,110	31,670	12.7	12.5	1,017,485	1,145,045	
Rented	12,005	11,900	-0.9	-3.6	512,360	493,995	
Average gross rent	\$ 706	\$ 767	8.6	10.4	\$ 750	\$ 828	
Average owners' payments	\$ 966	\$ 1,140	18.0	17.1	\$ 904	\$ 1,059	
Avg. value, owned dwell.	\$ 193,598	\$ 358,684	85.3	81.5	\$ 230,645	\$ 418,703	

Source: Statistics Canada. Notes: incomes are for 2005 and 2000; rent/owner's payments are restricted to non-farm, non-reserve private dwellings.

## Abbotsford City

4		Labour Force by Industry (NAICS)					
		Abbotsford			BC	% Distribution, 2006	
Industry		2001	2006	% Change	% change	Abbotsford	BC
Total labour force		59,240	65,760	11.0	8.1	100.0	100.0
Industry - Not applicable		1,105	850	- 23.1	- 26.6	1.3	1.5
<b>All industries (Experienced LF)</b>		<b>58,135</b>	<b>64,905</b>	<b>11.6</b>	<b>8.9</b>	<b>98.7</b>	<b>98.5</b>
111-112 Farms		5,455	5,925	8.6	5.2	9.0	1.8
113 Forestry and logging		110	150	36.4	- 10.0	0.2	1.0
114 Fishing, hunting and trapping		15	50	233.3	1.3	0.1	0.2
1151/2 Support activities for farms		280	305	8.9	11.3	0.5	0.1
1153 Support activities for forestry		125	25	- 80.0	- 21.5	0.0	0.3
21 Mining and oil and gas extraction		105	240	128.6	42.6	0.4	0.9
22 Utilities		255	265	3.9	- 3.4	0.4	0.5
23 Construction		4,380	6,100	39.3	39.9	9.3	7.5
31-33 Manufacturing		7,180	7,980	11.1	- 2.7	12.1	8.5
311 Food manufacturing		1,210	1,565	29.3	3.6	2.4	1.0
321 Wood product manufacturing		1,995	1,710	- 14.3	- 16.1	2.6	1.7
322 Paper manufacturing		150	80	- 46.7	- 13.5	0.1	0.6
41 Wholesale trade		2,420	2,975	22.9	11.6	4.5	4.1
44-45 Retail trade		6,670	6,810	2.1	6.9	10.4	11.2
441 Motor vehicle and parts dealers		810	925	14.2	9.0	1.4	1.1
445 Food and beverage stores		1,765	1,475	- 16.4	8.4	2.2	2.9
448 Clothing & clothing accessories		600	625	4.2	9.2	1.0	1.1
452 General merchandise stores		900	760	- 15.6	6.5	1.2	1.2
48-49 Transportation & warehousing		3,345	3,880	16.0	0.6	5.9	5.2
51 Information and cultural industries		945	940	- 0.5	- 5.3	1.4	2.6
52 Finance and insurance		1,690	1,900	12.4	4.5	2.9	3.8
53 Real estate & rental/leasing		885	1,085	22.6	22.1	1.6	2.3
54 Prof'sonal, scientific & tech. serv.		2,515	2,780	10.5	18.6	4.2	7.3
55 Mgmt. of companies/ent'prises		20	60	200.0	126.6	0.1	0.1
56 Admin+support, waste mgmnt srv.		1,975	2,465	24.8	20.4	3.7	4.4
61 Educational services		3,680	4,040	9.8	9.2	6.1	6.9
62 Health care and social assistance		5,550	5,725	3.2	6.5	8.7	9.6
71 Arts, entertainment and recreation		685	680	- 0.7	11.3	1.0	2.3
72 Accommodation and food services		3,890	4,045	4.0	7.7	6.2	8.1
721 Accommodation services		275	315	14.5	2.5	0.5	1.7
722 Food services & drinking places		3,615	3,735	3.3	9.2	5.7	6.4
81 Other services (excl. public admin.)		3,370	3,885	15.3	11.8	5.9	4.9
91 Public administration		2,580	2,575	- 0.2	- 2.0	3.9	5.0
Special Aggregations	Agriculture, Food and Beverage	6,955	7,815	12.4	5.8	11.9	2.9
	Fishing and Fish Processing	40	95	137.5	- 3.3	0.1	0.5
	Logging and Forest Products	2,385	1,975	- 17.2	- 14.7	3.0	3.7
	Mining and Mineral Products	1,285	1,405	9.3	17.1	2.1	2.1

Source: Statistics Canada. Industry according to NAICS version used in each census. Unpublished data.

5		Business Locations- Number of Firms by Employment Size Range								
		Firms with no employees		Firms with employees		% change	Abbotsford CMA			
		Abbotsford CMA	BC	Abbotsford CMA	BC	Abbotsford CMA	1 to 19	20 to 49	50-199	200 Plus
2008		6,661	185,879	5,909	175,003	-	5,239	437	206	27
2009		6,689	186,541	6,042	176,124	2.3	5,391	414	211	26
2010		6,934	194,349	6,062	175,913	0.3	5,414	409	214	25
2011		6,930	195,290	6,041	173,589	- 0.3	5,425	400	194	22

Source: Business Register, Statistics Canada. In some areas, boundary changes/geocoding changes may cause large changes.

6		Municipal Residential Taxes and Charges on a Representative House					
		Abbotsford					
		House Value		Taxes & Charges			
Year	\$	% change	\$	% change			
2007	345,656		3,102				
2008	383,494	10.9	3,244	4.6			
2009	386,263	0.7	3,497	7.8			
2010	377,482	-2.3	3,743	7.1			
2011	398,862	5.7	3,838	2.5			

Source: Ministry of Community Development [http://www.cd.gov.bc.ca/lgd/infra/statistics\\_index.htm](http://www.cd.gov.bc.ca/lgd/infra/statistics_index.htm) (No RD level figures)

## Abbotsford City

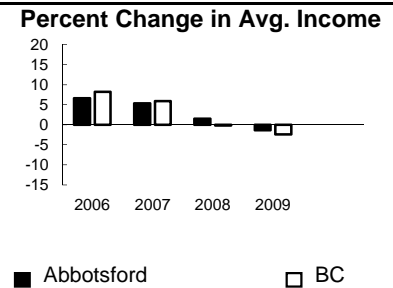
7	Values of Building Permits									
	Residential				Non-Residential			Total		Year
	Number of Units		Value \$'000		Value \$'000			Value \$'000		
Abbotsford	BC	Abbotsford	BC	Abbotsford	BC	Abbotsford	BC			
2007	731	40,932	118,258	8,611,723	115,342	3,932,968	233,600	12,544,691	2007	
2008	1,073	30,110	150,303	6,899,289	141,224	3,677,866	291,527	10,577,155	2008	
2009	340	18,607	60,349	4,491,075	57,208	3,138,810	117,557	7,629,885	2009	
2010	450	28,984	73,785	6,705,888	94,415	3,017,921	168,200	9,723,809	2010	
2011	433	25,745	69,919	6,113,406	153,889	3,136,361	223,808	9,249,767	2011	

Source: Statistics Canada

Note: Detailed non-residential permits data can be found on our Website: www.bcstats.gov.bc.ca

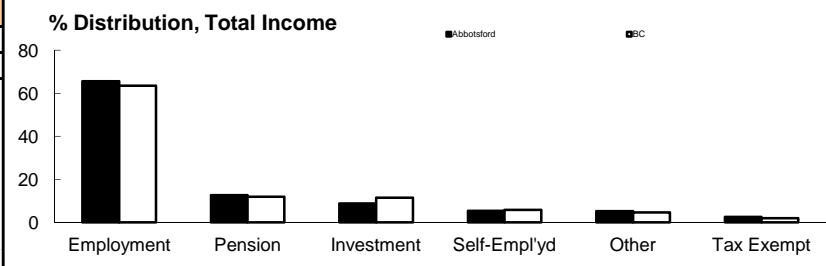
A dash can indicate a nil report, a value of less than \$500, or non-reporting. P indicates 'preliminary'.

8	Personal Taxation Statistics						Percent Change in Avg. Income	
	Total Income of All Returns							
	All Returns (number)		Average Income (\$)		% Change avg. income			
Year	Abbotsford	BC	Abbotsford	BC	Abbotsford	BC		
2005	89,110	3,154,090	31,733	35,601	n/a	n/a		
2006	90,090	3,165,750	33,833	38,523	6.6	8.2		
2007	93,560	3,287,750	35,626	40,802	5.3	5.9		
2008	95,820	3,383,640	36,164	40,736	1.5	-0.2		
2009	96,500	3,406,860	35,667	39,754	-1.4	-2.4		



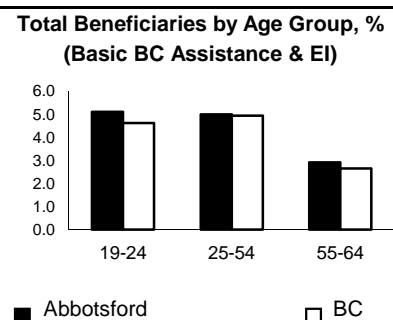
Taxation data available at: <http://www.bcstats.gov.bc.ca/data/dd/income.asp>

9	Source of Total Income 2009				% Distribution, Total Income					
	Abbotsford		BC							
	\$Thousands	% of Total	% of Total							
Employment	2,258,795	65.6	63.5							
Pension	436,146	12.7	11.9							
Investment	299,883	8.7	11.4							
Self-Employed	181,530	5.3	5.7							
Other	179,146	5.2	4.5							
Tax Exempt	86,185	2.5	1.9							
Total	3,441,849	100.0	100.0							



Source: Canada Revenue Agency. Areas are defined by postal codes and may not match municipal boundaries.

9	Dependency on the Safety Net						Total Beneficiaries by Age Group, % (Basic BC Assistance & EI)		
	Percentage of Population by Age Receiving Benefits - September 2009								
	Age Group	BC Basic* Income Assistance Recipients (%)		Employment Insurance Beneficiaries (%)		Total of BC Basic Income Assistance & EI Beneficiaries (%)			
Abbotsford		BC	Abbotsford	BC	Abbotsford	BC			
Under 19	2.2	2.7							
19-24	2.2	2.1	3.0	2.6	5.1	4.6			
25-54	1.9	1.9	3.1	3.1	5.0	4.9			
55-64	0.5	0.7	2.4	2.0	2.9	2.6			
19-64	1.7	1.7	3.0	2.8	4.6	4.4			



\* On temporary assistance only. Excluded are those on Continuous Assistance, aboriginals living on reserve, seniors/OAS, & children living with relatives.

Source: BC Stats (using administrative files from the BC Ministry of Housing & Social Development, and Human Resources & Social Development Canada)

Note: EI Beneficiaries reports now include regular, fishing and employment benefits, work sharing and support measures. The reports exclude sickness, maternity and parental benefits.

10	Business Formations and Failures									
	Incorporations				Bankruptcies					
	Number				Abbotsford-Mission CMA		Mainland/Southwest DR		BC	
Year	Abbotsford	BC	Year	Business	Consumer	Business	Consumer	Business	Consumer	
2007	949	34,036	2005	26	265	n.a.	n.a.	786	8,168	
2008	800	30,085	2006	21	270	281	3,931	585	7,020	
2009	701	26,431	2007	9	263	230	3,653	470	6,651	
2010	723	30,305	2008	14	304	187	3,985	454	7,293	
2011	803	30,844	2009	10	408	219	5,638	380	10,639	

Source: BC Ministry of Finance

Source: Office of the Superintendent of Bankruptcy, Government of Canada

Incorporations are counted in municipality of the registered office address which may differ from the actual business location.

Note: Bankruptcy is by urban postal code forward sortation area and is counted where it is filed.