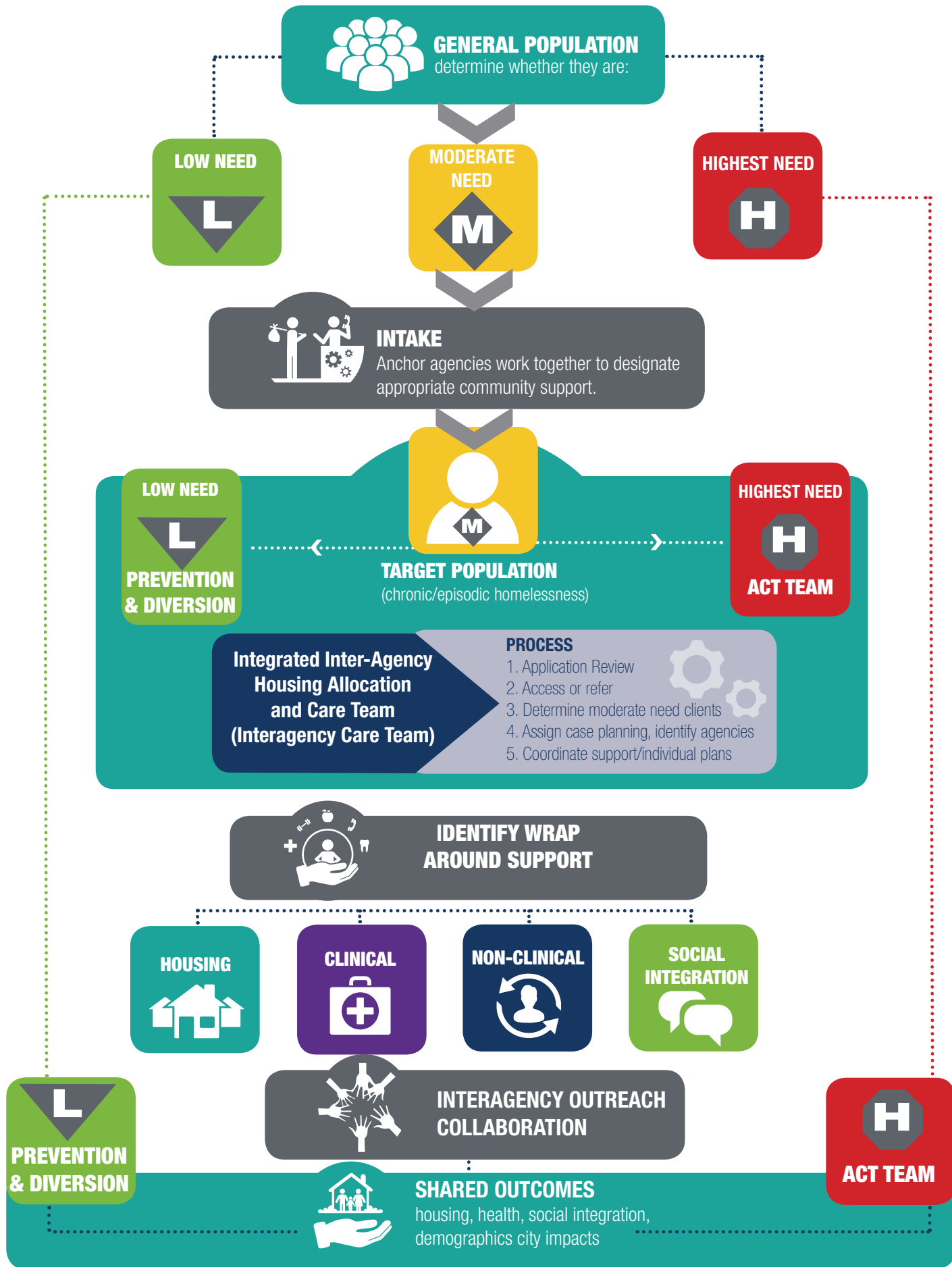


Abbotsford Homelessness Prevention and Response System

CIR Pilot Process



Abbotsford Homelessness Prevention and Response System DEFINITIONS

The following definitions and acronyms are used when describing the Homelessness Prevention Response System.

Housing First

People experiencing homelessness are responded to respectfully, have a choice of appropriate housing and are supported by wraparound services and the community.

Coordinated Intake & Referral

Receives applications from individuals who require access to housing, health, income and formal/informal support.

Inter-Agency Care Team

Supports individuals who have barriers in accessing traditional services, who are experiencing persistent addictions, and may have mental health challenges.

HOUSING



- Affordable housing and supportive housing
- Housing with Abbotsford Rental Connect (HARC)
- Market Housing

CLINICAL



- Fraser Health Authority
- Access clinic
- Addictions/Mental Health
- Abbotsford Primary Health Services

NON-CLINICAL



- Housing retention
- Support workers
- Income
- Other supports as required by participants

SOCIAL INTEGRATION



- Work, volunteer and civic engagement opportunities
- Service provider connections

INTAKE FUNCTION



Anchor agencies work together to designate appropriate community support. Their role is vital and includes VAT administration referral to the Outreach Team and liaison to ACT, as well as updated service/housing availability.

ACT TEAM



ACT Team stands for Assertive Community Team and provides flexible community based supports for adults with serious and persistent mental illness.