



CULTURES IN ABBOTSFORD

Open up Slido



Wi-Fi Password: ????

Please scan QR code
or go to slido.com and enter #8213478



In 2022, Canada welcomed a record 406,000 new immigrants and will welcome nearly 500,000 each year for at least the next three years.



WHAT IS CANADA BIRTH RATE?

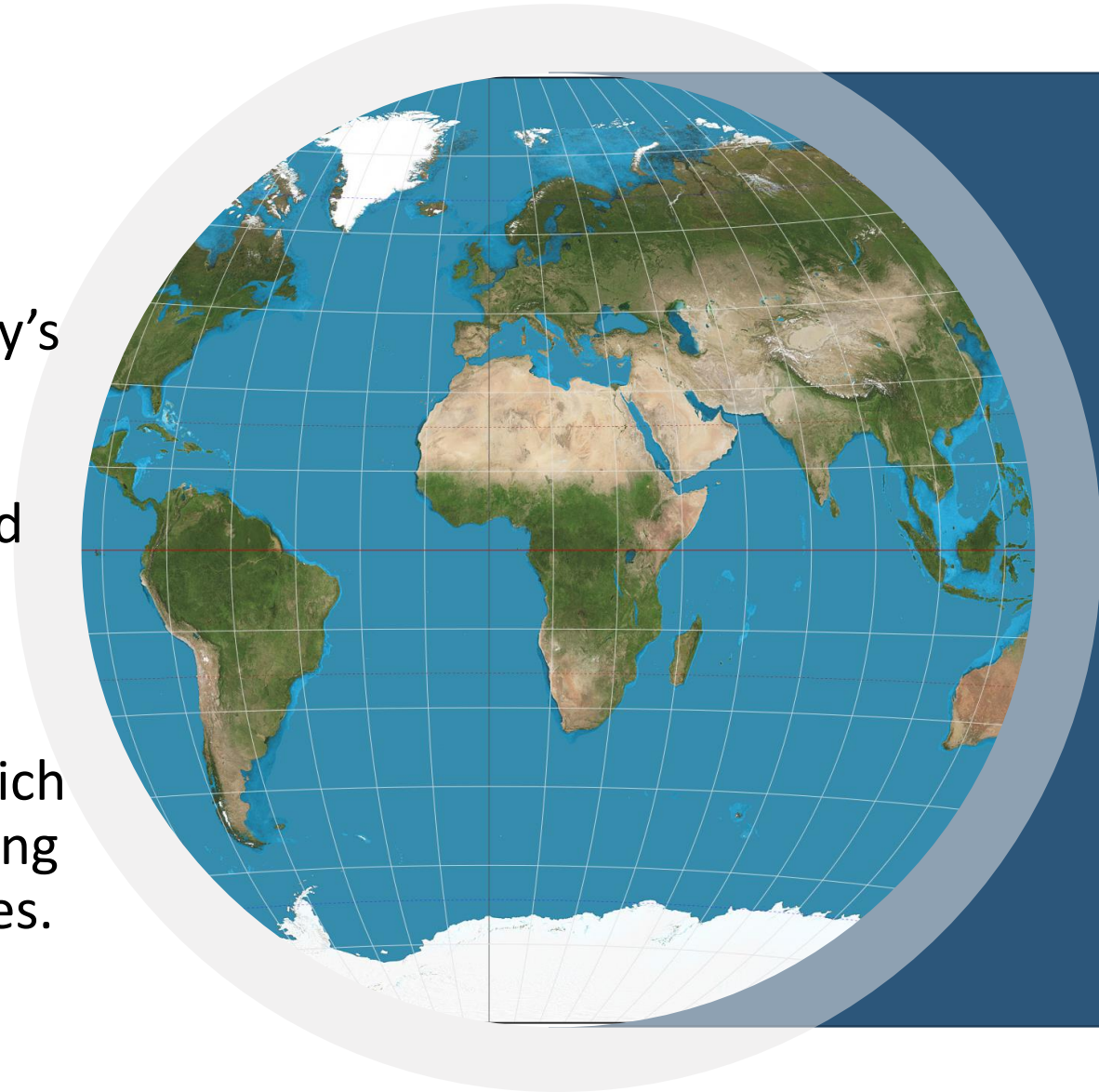
Out of 228 Countries,
what number are we
at?



WHAT IS CANADA'S BIRTH RATE?

Rank	Country	births/1,000 population	Date of Information
1	<u>Niger</u>	46.86	2023 est.
2	<u>Angola</u>	41.42	2023 est.
3	<u>Benin</u>	40.72	2023 est.
182	<u>Finland</u>	10.33	2023 est.
183	<u>Liechtenstein</u>	10.3	2023 est.
184	<u>Switzerland</u>	10.3	2023 est.
185	<u>Canada</u>	10.11	2023 est.
186	<u>Thailand</u>	10.04	2023 est.
187	<u>Cuba</u>	9.99	2023 est.

- The birth rate is one of the most important contributors to a country's population growth. It also greatly impacts the country's decisions on policies regarding the economy and health, education, and pension systems. Canada, along with other Western countries has seen falling birth rates for several decades, which is one of the causes behind the aging population and workforce shortages.



TOP 5 COUNTRIES IMMIGRANTS ARE COMING FROM?



TOP 5 COUNTRIES IMMIGRANTS ARE COMING FROM TO ABBOTSFORD?



- India
- Philippines
- Syria
- Pakistan
- South Korea
- USA
- China
- UK

Countries of Origin

India is the predominant country of origin for immigrants in Abbotsford, followed by a diverse assortment of countries.

▶ Almost six out of ten (59%) recent immigrants to Abbotsford were born in India, followed by, in distant second, the Philippines (6%), and third, Syria (4%).

▶ About 10% of B.C.'s recent immigrants from India live in Abbotsford, more than triple the city's share (3%) of total recent immigrants.

Abbotsford			B.C.			Greater Vancouver					
	#	%		#	%		#	%			
Total Immigrants	43,190	100%	Recent Immigrants	6,130	100%	Recent Immigrants	197,425	100%	Recent Immigrants	154,820	100%
India	23,830	55%	India	3,600	59%	India	39,390	20%	India	30,545	20%
U.K.	2,315	5%	Philippines	375	6%	China	31,450	16%	China	28,970	19%
Philippines	1,730	4%	Syria	265	4%	Philippines	21,220	11%	Philippines	15,090	10%
U.S.	1,395	3%	Pakistan	145	2%	U.S.	8,760	4%	Korea, South	6,125	4%
Netherlands	895	2%	Korea, South	125	2%	U.K.	7,670	4%	Iran	5,615	4%
Viet Nam	885	2%	U.S.	120	2%	Korea, South	7,225	4%	U.S.	5,460	4%
Korea, South	850	2%	China	100	2%	Iran	5,850	3%	Brazil	4,625	3%
China	845	2%	U.K.	80	1%	Brazil	5,125	3%	U.K.	4,555	3%
Germany	820	2%	Congo	65	1%	Syria	4,955	3%	Syria	3,380	2%
Pakistan	565	1%	Russia	60	1%	Australia	3,280	2%	Mexico	2,460	2%
Other places	9,060	21%	Other places	1,195	19%	Other places	62,500	30%	Other places	47,995	29%

Top 10 Places of Birth, by Total and Recent Immigrant Populations (Census 2021)

TOP 5 LANGUAGES SPOKEN AMONG NEW IMMIGRANTS



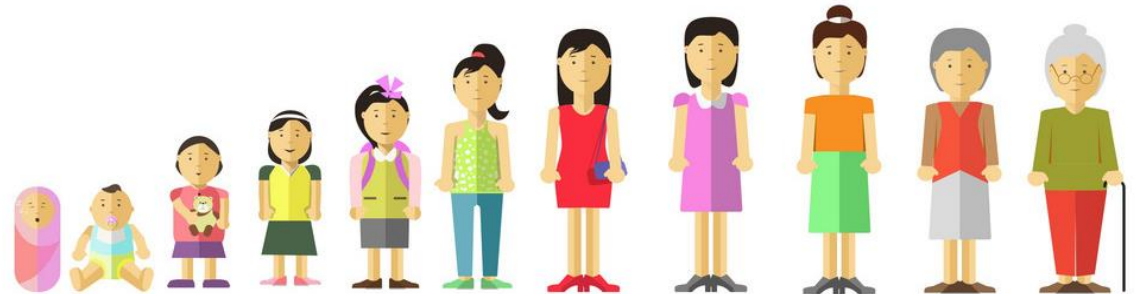
Top 5 languages spoken among new Immigrants

- Punjabi
- Arabic
- Hindi
- Korean
- Tagalog
- Russian
- Urdu



WHAT IS THE AVERAGE AGE AMONG NEW IMMIGRANTS?

- A. 0-14yrs
- B. 15-24yrs
- C. 25-54yrs
- D. 55-64yrs
- E. 65+



IMMIGRANTS BY AGE GROUP

- 0-14yrs 13%
- 15-24yrs 12%
- 25-54yrs 63%
- 55-64yrs 7%
- 65+ 6%

Immigrants by Age Group

Census data illustrates the emphasis placed on those of core working age within Canada's immigration system.

- ▶ Immigration is a key economic solution to Canada's aging population. In 2021, the average age of Abbotsford's recent immigrants was 33.6, compared to 51.0 for its total immigrants and 36.1 for the Canadian-born population.
- ▶ In 2021, core working-age immigrants (25-54 years) accounted for 63% of Abbotsford's recent immigrants and 50% of its total immigrant population, significantly higher than the 35% among the Canadian-born.
- ▶ Only 6% of recent immigrants were aged 65 or over, considerably lower than the 26% of immigrant and 15% of Canadian-born seniors.
- ▶ The Canadian-born population showed a notably higher proportion (24%) of young people between the ages of 0-14, compared to immigrants (3%) and recent immigrants (13%). In part, this is due to the influx of young adult immigrants over the past couple of decades, now with children.

Immigration is playing a significant role in addressing Canada's low birth rate and its aging population.

Age	Abbotsford						Greater Vancouver					
	Canadian-born		Total Immigrants		Recent Immigrants		Canadian-born		Total Immigrants		Recent Immigrants	
	#	%	#	%	#	%	#	%	#	%	#	%
Total	100,680	100%	43,185	100%	6,125	100%	1,350,620	100%	1,089,180	100%	154,815	100%
0 to 14 yrs	24,480	24%	1,305	3%	805	13%	315,040	23%	35,330	3%	19,650	13%
15 to 24 yrs	15,005	15%	2,155	5%	735	12%	194,025	14%	65,190	6%	14,425	9%
25 to 54 yrs	34,775	35%	21,745	50%	3,840	63%	513,995	38%	536,500	49%	107,135	69%
55 to 64 ys	11,530	11%	6,600	15%	400	7%	153,285	11%	191,990	18%	5,920	4%
65 yrs +	14,890	15%	11,400	26%	355	6%	174,260	13%	260,165	24%	7,690	5%

Age Distribution – Abbotsford (Census 2021)

WHAT IS THE HIGHEST CATEGORY IMMIGRANTS COMING IN ?

- A. Refugees
- B. Sponsored by Family
- C. Economic Immigrants
- D. Other Immigrants

Immigration Arrival Categories

Abbotsford has witnessed a surge in immigrants arriving in the economic class and a decrease in the proportion of immigrants sponsored by family.

- ▶ Census 2021 reported that 44% of recent immigrants in Abbotsford arrived in the economic class. While this figure is still lower than the 63% for Greater Vancouver, it represents a 10% increase compared to the Census 2016 period.
- ▶ Conversely, the proportion of recent immigrants arriving in Abbotsford under the family class has decreased to 45% in 2021 from 63% in 2016.
- ▶ Abbotsford has a relatively high proportion of refugees, including 8% of total immigrants and 11% of recent immigrants.

Immigration Category	Abbotsford				Greater Vancouver			
	Total Immigrants		Recent Immigrants		Total Immigrants		Recent Immigrants	
	#	%	#	%	#	%	#	%
Total Immigrants	36,025	100%	6,130	100%	930,915	100%	154,820	100%
Economic immigrants	10,505	29%	2,685	44%	554,240	60%	97,715	63%
Principal applicants	4,425	12%	1,365	22%	225,255	24%	52,940	34%
Secondary applicants	6,080	17%	1,315	21%	328,990	35%	44,775	29%
Immigrants sponsored by family	22,560	63%	2,730	45%	282,705	30%	43,515	28%
Refugees	2,795	8%	675	11%	81,155	9%	12,880	8%
Other immigrants	165	0%	45	1%	12,805	1%	710	0%

Number of Immigrants by Immigration Category (2021). Reflects admission category and applicant type for the immigrant population in private households who landed between 1980 and 2021 - 25% sample data

*Note: 'Other immigrant' refers to a person who was granted permanent resident status under a public policy or humanitarian and compassionate cases.

WHAT PERCENTAGE OF NEW IMMIGRANTS HOLD A BACHELORS OR HIGHER DEGREE?

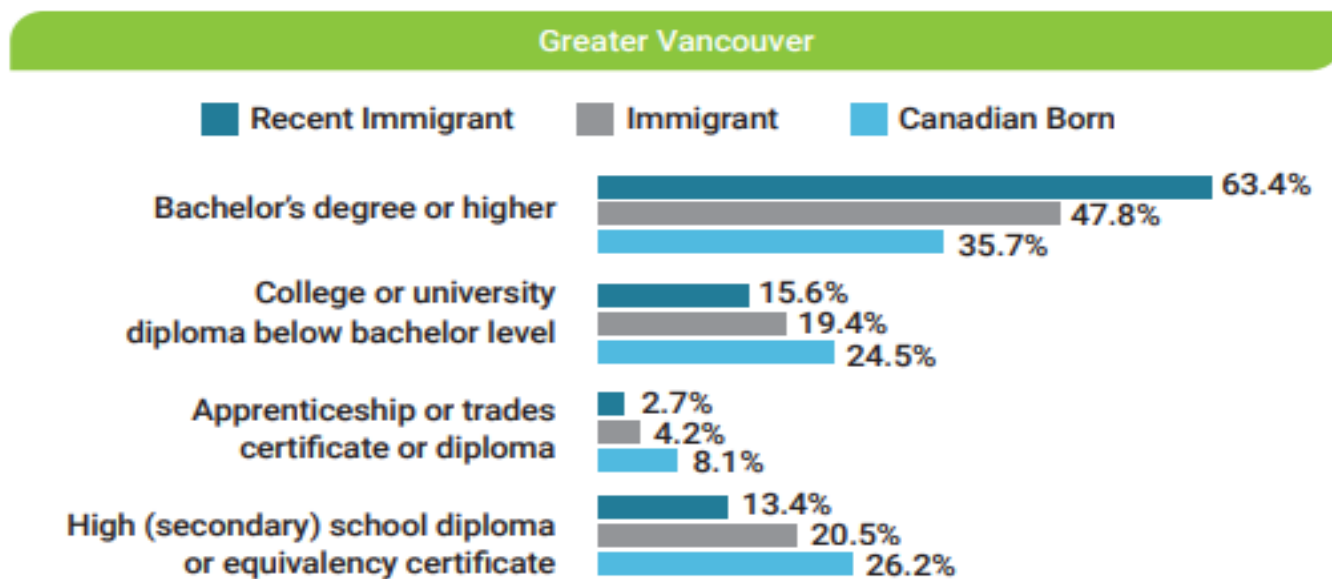
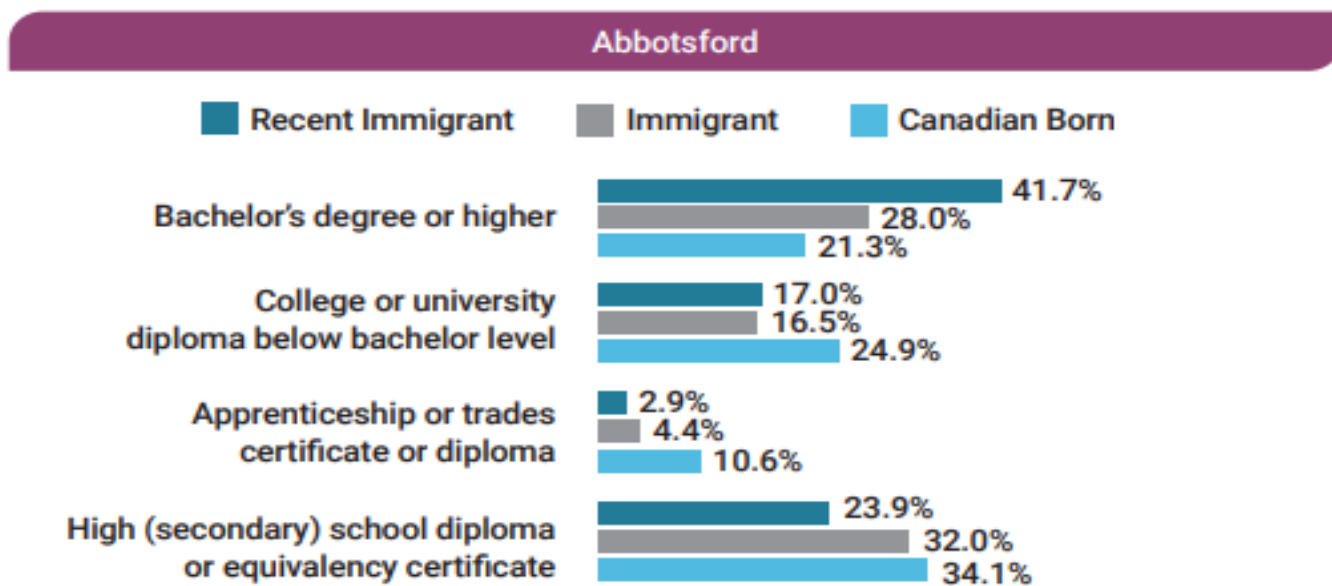
- A. 23.9%
- B. 32.5%
- C. 41.7%
- D. 15.9%



Education Levels

Immigrants are highly educated, with recent immigrants the most educated of all.

- ▶ Recent immigrants in Abbotsford between the ages of 25 and 64 are more likely to have advanced education, with 41.7% holding a bachelor's degree or higher. This proportion is significantly higher than that among Canadian-born residents (21.3%) and the total immigrant population (28%).
- ▶ Compared to the previous census period, education levels rose significantly. In 2016, 32.3% of recent immigrants and 23.2% of immigrants had a bachelor's degree or higher.
- ▶ However, the attainment of advanced education among Abbotsford's population is significantly lower than in Greater Vancouver.



Education for population aged 25 – 64 (Census 2021)

QUESTIONS