

WELCOME

LEARN ABOUT THE PROJECT + SHARE YOUR IDEAS!

- Grab an event guide to make your way through each station
- Go at your own pace...and have fun!

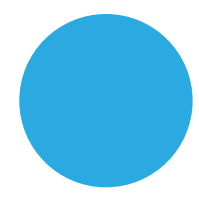


— Urban Development Boundary - - - UFV Campus

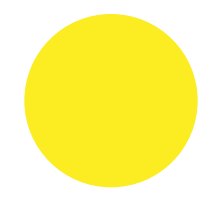
The City of Abbotsford and the University of the Fraser Valley are undertaking a joint initiative to shape the future of the UDistrict. This initiative includes the development of a **UDistrict Neighbourhood Plan** and a fully compatible and integrated **Abbotsford Campus Master Plan**. Building on the original UDistrict Vision, this integrated approach will deliver two highly effective plans to manage future growth.

WHERE DO YOU LIVE?

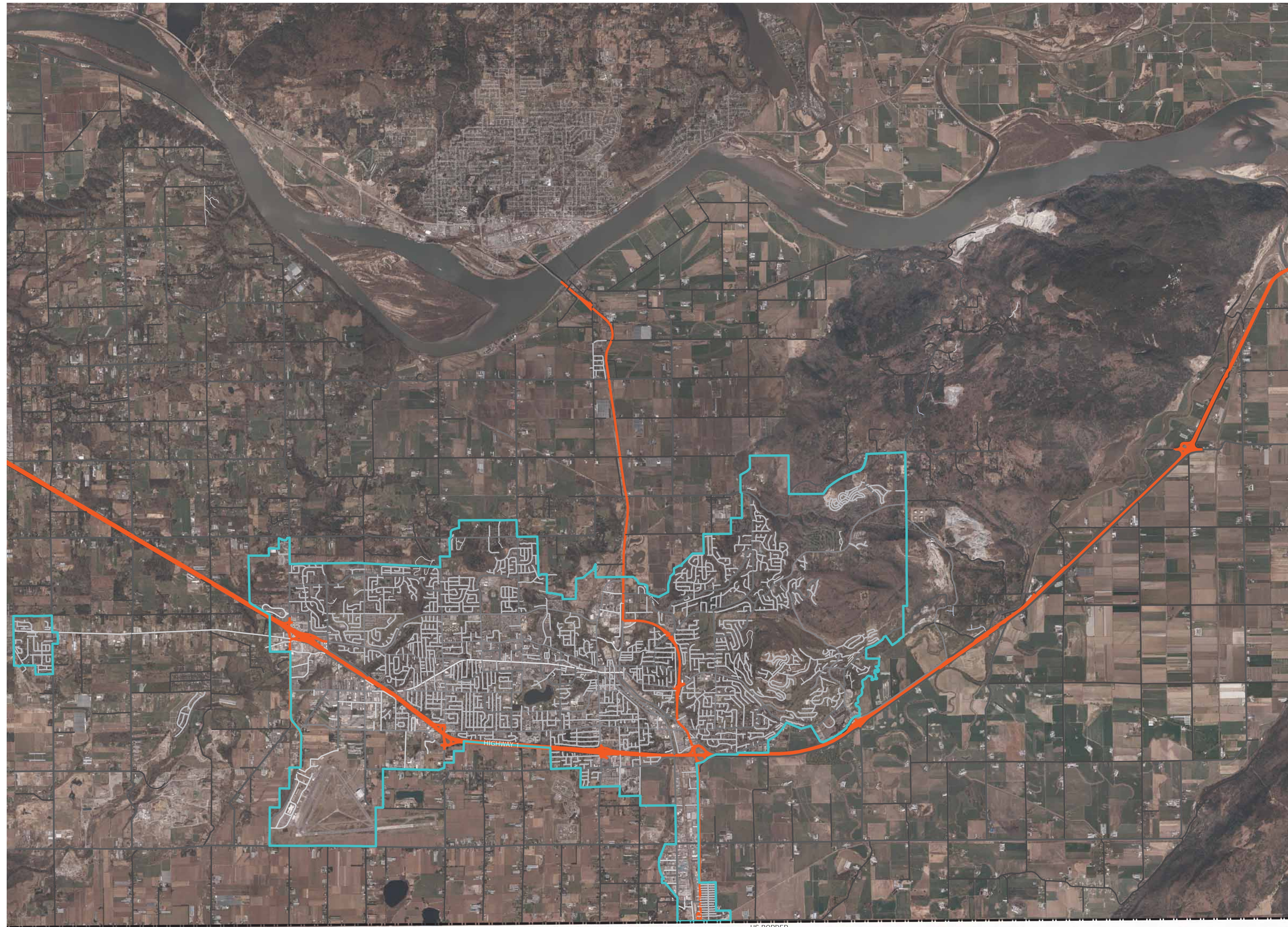
Please indicate with a sticker where you live.



Use a blue sticker if you're a student



Use a yellow sticker if you are not a student

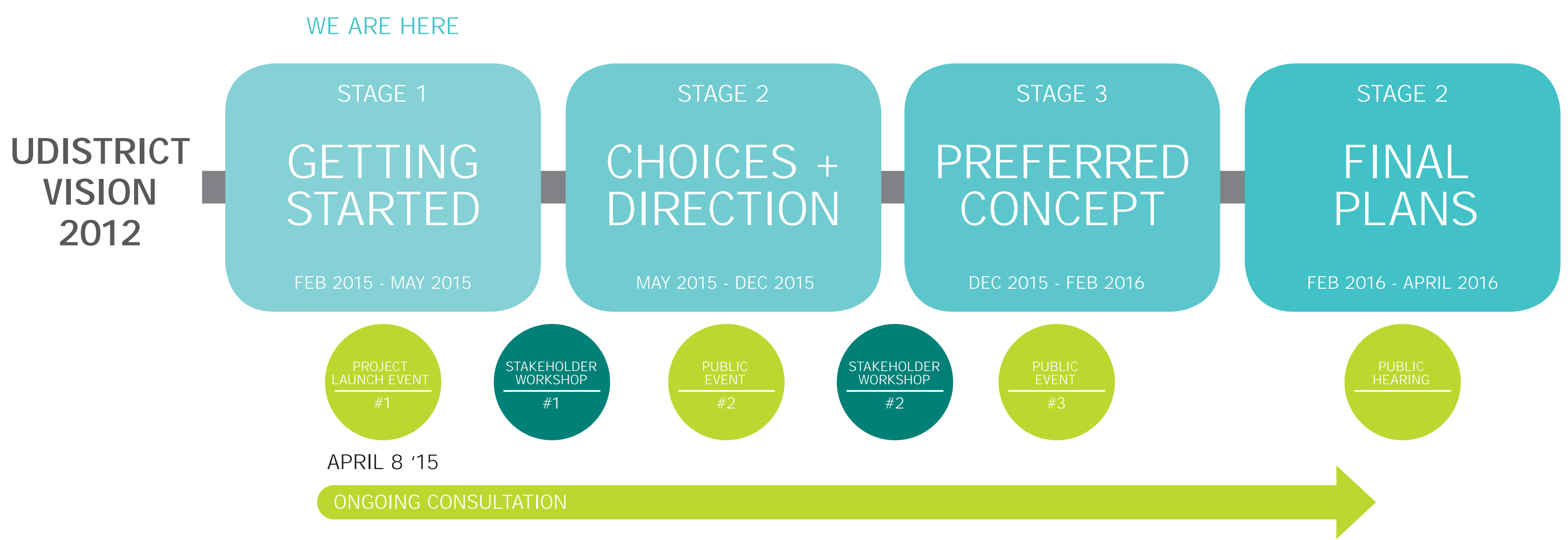


— Urban Development Boundary

If you live outside the area shown, please put a sticker in this box

THE PROJECT

THE PROCESS this year-long planning and design process will set clear direction for the future of the University and the UDistrict. It will be tightly coordinated between the City and the University for maximum innovation, and lots of opportunities for the community and stakeholders to get involved.



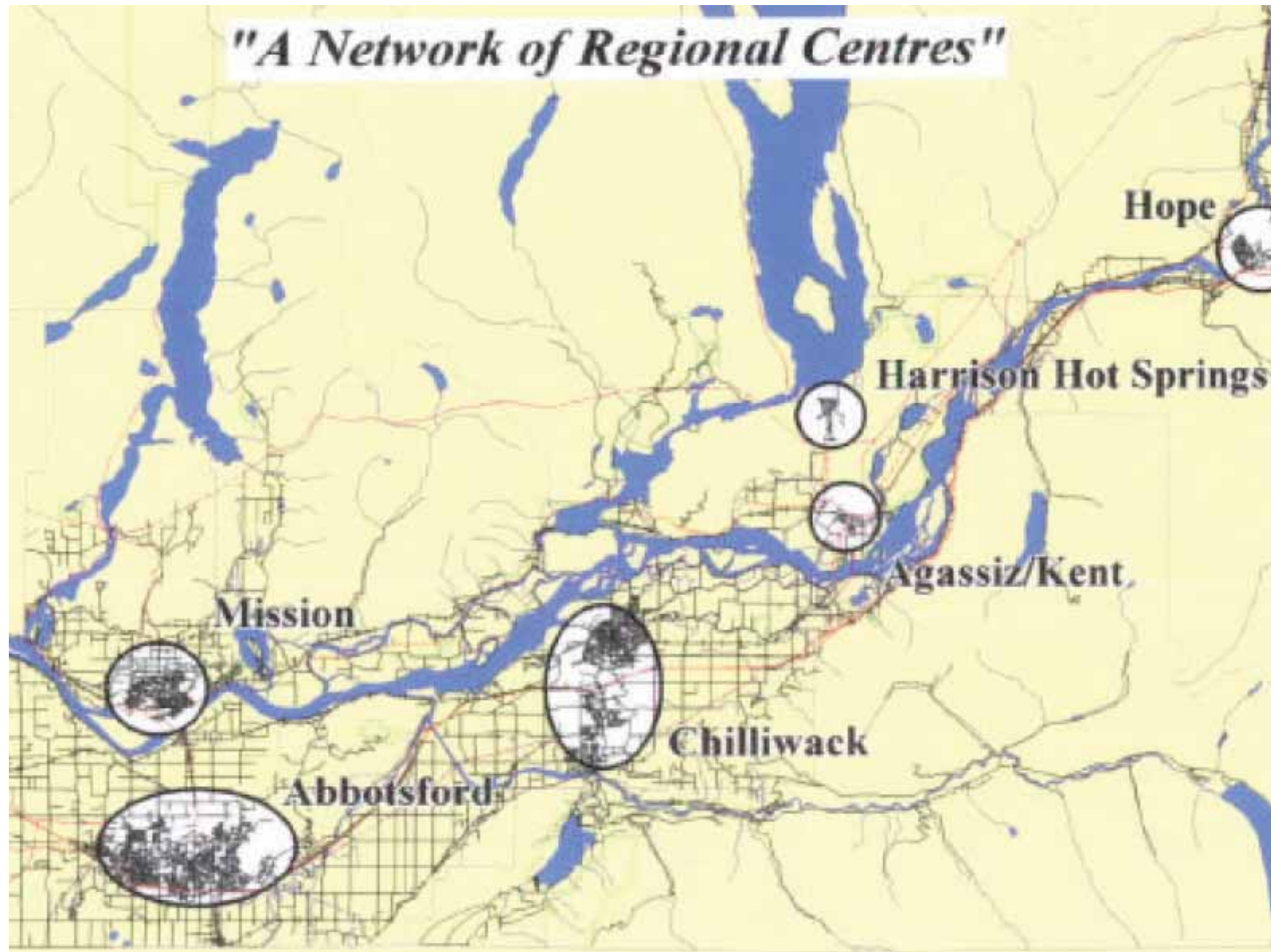
THE OPPORTUNITY: this is a rare opportunity to shape the future of both a dynamic institution and an important neighbourhood in a growing part of the Lower Mainland and BC.

GET INVOLVED! We need the ideas of a wide range of people. The planning and design team wants to hear your ideas as these will influence the evolving design and make it better. "U Make it happen!"

CONTEXT

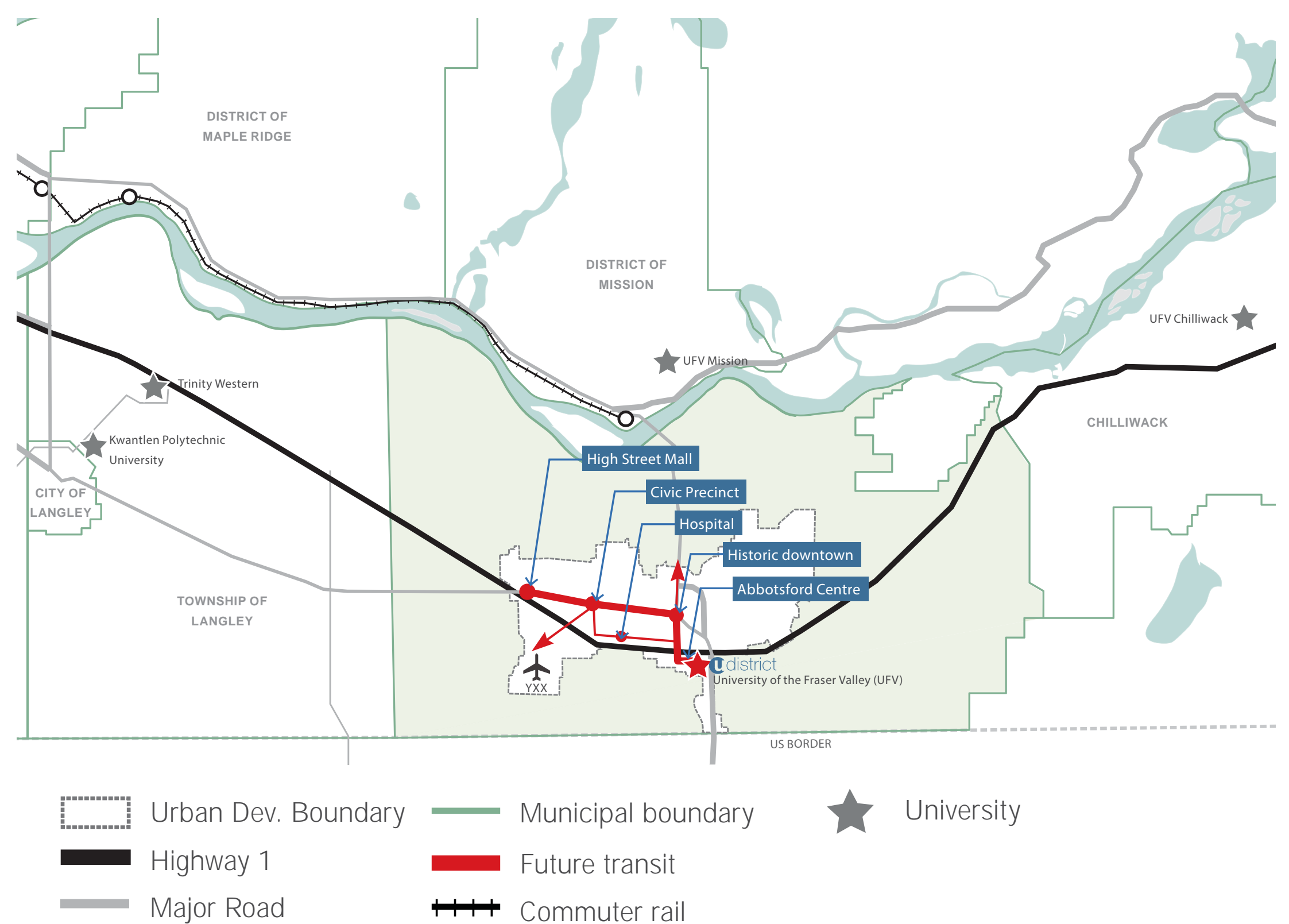
REGIONAL

Adopted in 2004, the FVRD Regional Growth Strategy provides policy guidance at the regional scale. It aims for a network of vibrant, distinct and sustainable communities linked by multi-modal transportation, and set in a largely agricultural context. It focuses growth in compact neighbourhoods that rely heavily on urban infill and apply best management practices for environmentally sensitive development.



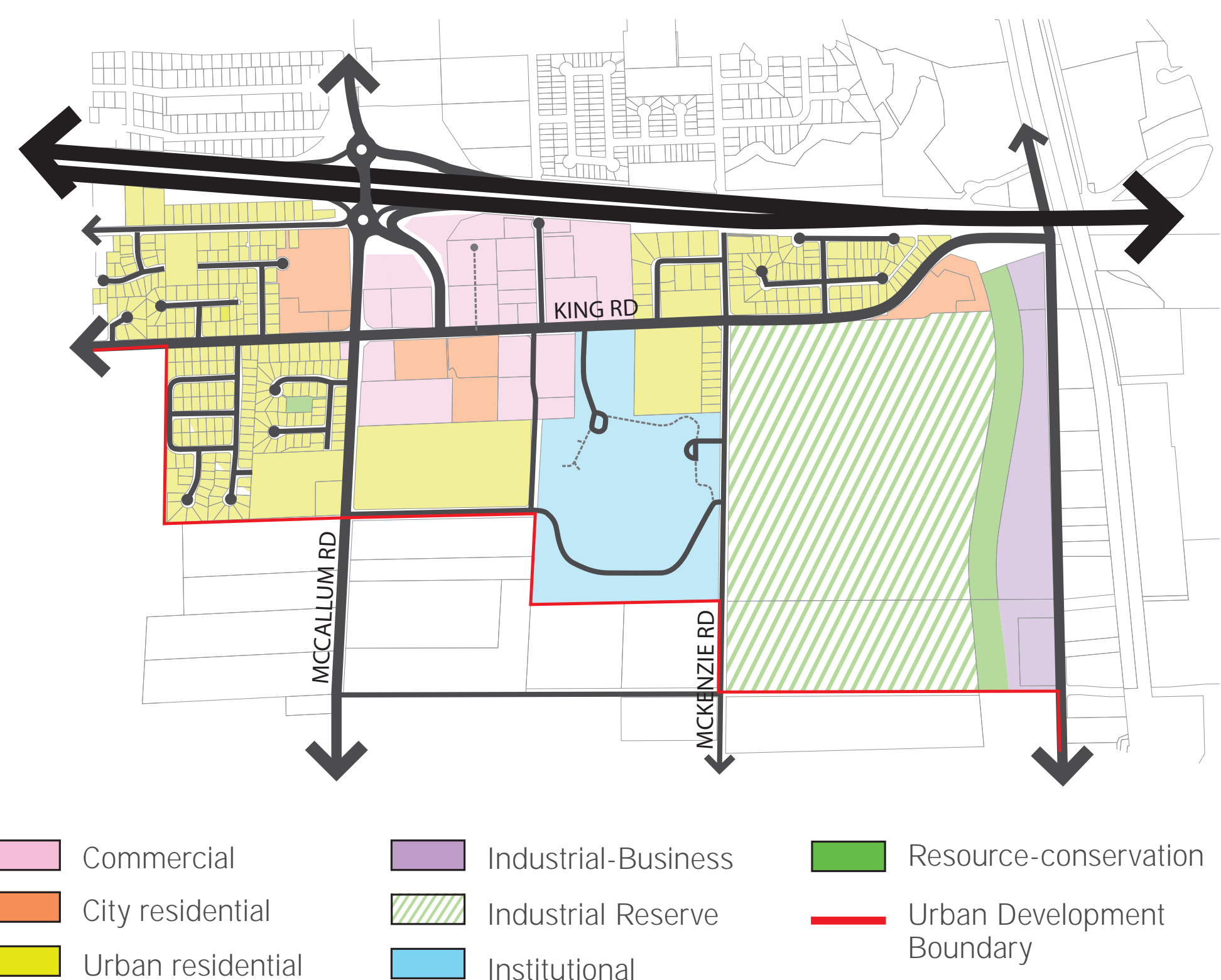
CITY-WIDE

Lying within the City's Urban Development Boundary (UDB) the UDistrict anchors the southern terminus of Abbotsford's primary transit corridor. This corridor, primarily running along major arterials, connects to other key destinations or 'urban anchors' and links to 'feeder' high frequency transit routes.

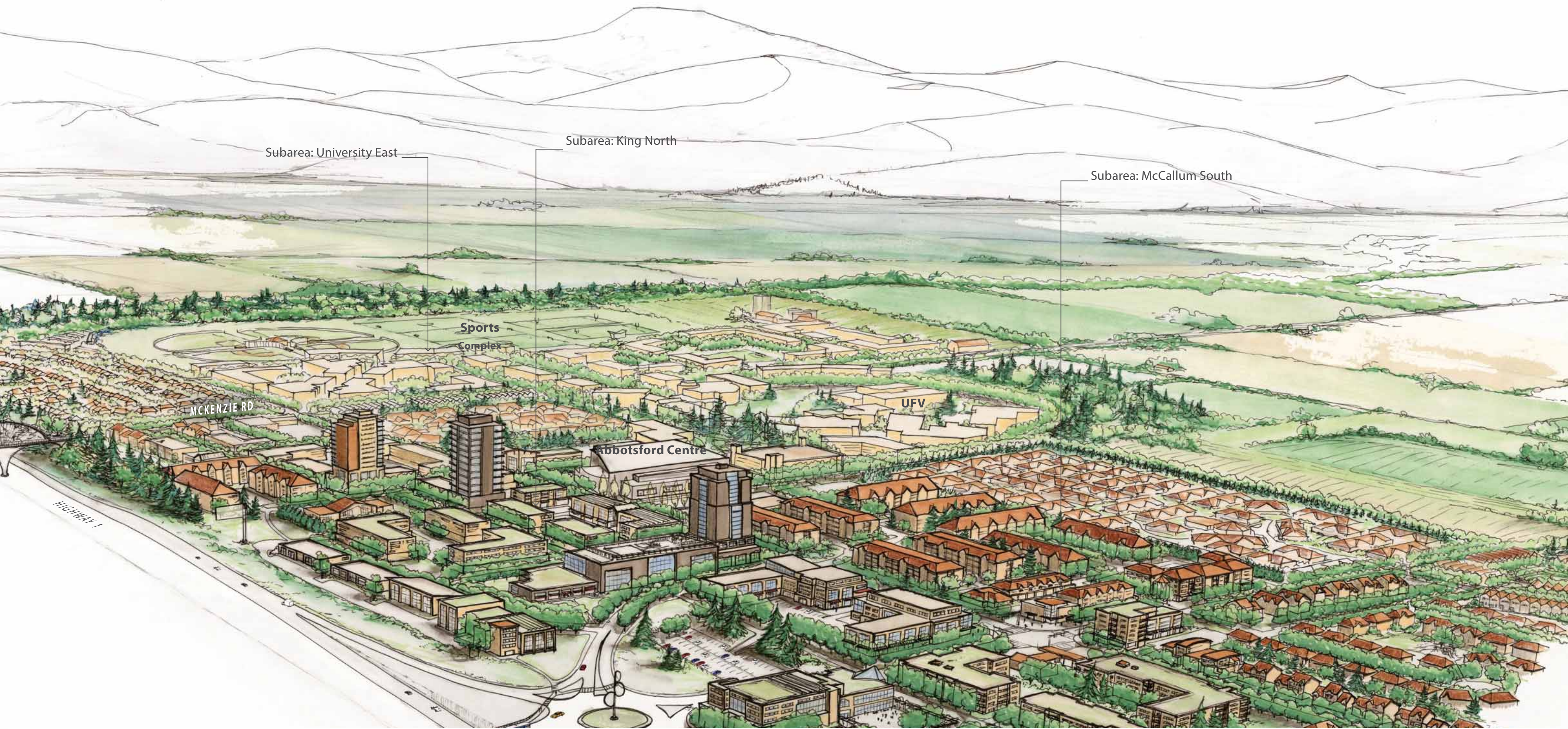


OFFICIAL COMMUNITY PLAN

The Abbotsford OCP is currently undergoing an extensive review and update. The UDistrict planning process will both inform and be informed by this project. The current OCP supports a mix of residential and commercial land uses in this area, which in turn supports significant transit-oriented development opportunities that would strengthen the UDistrict's role as an urban anchor and major destination in the City.

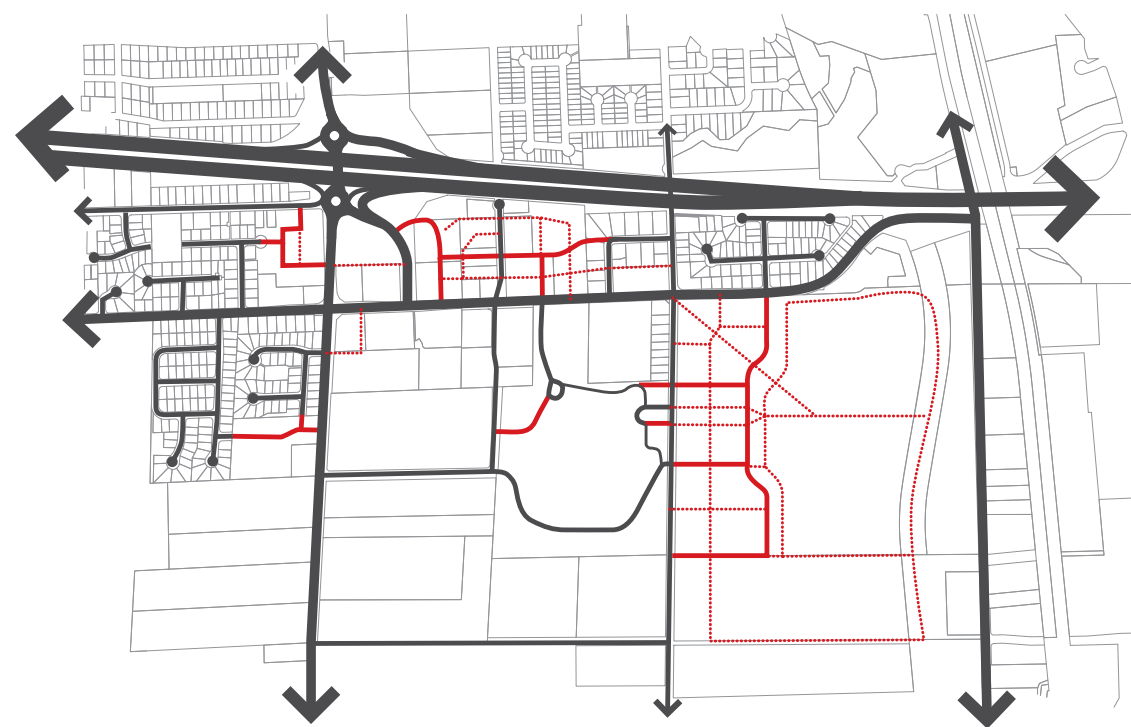


UDISTRICT VISION



UDISTRICT VISION In 2012 City Council endorsed the UDistrict Vision which provides a long term vision for future development in the UDistrict. This Vision was the result of extensive public and stakeholder engagement and will provide a starting point for this planning process.

TRANSIT-ORIENTED DEVELOPMENT



WALKABLE GRID

Create short, walkable city blocks that improve connectivity for pedestrians, cyclists and vehicles.



FOCUSED ACTIVITY

Focus new development within a 5 minute walk of transit and locate retail close to King Road.



PEDESTRIAN-FRIENDLY STREETS

Design streets and buildings to create safe, comfortable and attractive places for people.

UDISTRICT VISION

UDISTRICT VISION PRINCIPLES

The principles developed during the UDistrict Visioning process will help to guide development of the detailed UDistrict Neighbourhood Plan and Abbotsford Campus Master Plan.



SUPPORT INNOVATION

Partner with government, non-governmental organizations and private businesses to pursue innovation in clean energy, food security, applied research, and green development.



BE STRATEGIC

Support the growth of UFV and strengthen investment in the area while providing the foundations for a stronger, more diverse economy in the future.



CREATE A VIBRANT COMMUNITY

Support an inclusive and diverse community with local services and amenities clustered in high-activity nodes or corridors. A higher density, mixed-use community will be supported by walkable streets and high quality public amenities.



SUPPORT HEALTHY LIFESTYLES

Promote safe and healthy lifestyles through walkable urban form, access to green space and local, healthy food options.



BE STEWARDS OF THE LAND

Create and protect habitat, reduce emissions and waste, use energy more efficiently and from cleaner sources, capture and infiltrate rainwater and promote local agriculture.

CAMPUS PLANNING



ABBOTSFORD CAMPUS MASTER PLAN (2009) identified opportunities for future growth on campus. The current master planning process will build off of this work, link the University's strategic directions to the master plan and look for ways to better integrate the existing campus with the larger community.

UFV STRATEGIC GOALS



1. HIGHER LEARNING

Provide the best undergraduate education in Canada

ADD YOUR IDEAS!

- Flexible learning spaces
- Digital media technologies
- Discovery-based learning
- Applied research + practicum



2. LEADERSHIP

Be a leader of social, cultural, economic, and environmentally-responsible development in the Fraser Valley

- Healthy living, walkable community
- Social, creative spaces
- Knowledge economy
- Social-cultural diversity
- Local foods, sustainable ag.



3. INNOVATION

Be innovative, entrepreneurial, and accountable in achieving our goals

- Digital Media Hub
- Public-Private partnerships
- Innovation hub for entrepreneurs
- Sustainable development

COMMUNITY MAPPING

UDISTRICT TODAY: WHAT'S MOST IMPORTANT TO YOU?
Use the colour sticky dots to identify the places most important to you. Tell us why you feel this way with a sticky note.

- Natural spaces like open land, parks and natural features
- Housing and shopping
- Transportation (transit, trails/pathways, parking)
- Amenities + facilities (places for gathering, studying, research, exercise, childcare etc.)



OPPORTUNITIES

GREEN NETWORK

WHAT ARE YOUR PRIORITIES?



AGRICULTURE

Opportunities to strengthen relationships with the agricultural community such as agricultural research, community gardens and farmers markets

Vote Here				
<input type="radio"/>	<input type="radio"/>	<input type="radio"/>	<input type="radio"/>	<input type="radio"/>
low priority		neutral		high priority



NATURAL AREAS

Natural areas within the UDistrict can provide ecological, social and health benefits.

Vote Here				
<input type="radio"/>	<input type="radio"/>	<input type="radio"/>	<input type="radio"/>	<input type="radio"/>
low priority		neutral		high priority



STORMWATER MANAGEMENT

Keeping rainwater out of gutters and pipes helps to reduce demand on infrastructure and supports ecosystem health

Vote Here				
<input type="radio"/>	<input type="radio"/>	<input type="radio"/>	<input type="radio"/>	<input type="radio"/>
low priority		neutral		high priority

DID WE MISS ANYTHING?

--

OPPORTUNITIES

PUBLIC REALM

WHAT ARE YOUR PRIORITIES?



COMPLETE STREETS

Streets that are comfortable for people who walk, bike or take transit

Vote Here				
<input type="radio"/>	<input type="radio"/>	<input type="radio"/>	<input type="radio"/>	<input type="radio"/>
low priority		neutral		high priority



UNIQUE + IDENTIFIABLE PLACES

The places that make the UDistrict feel unique and different from other neighbourhoods

Vote Here				
<input type="radio"/>	<input type="radio"/>	<input type="radio"/>	<input type="radio"/>	<input type="radio"/>
low priority		neutral		high priority



GATHERING PLACES

Places on and off campus for people to socialize, linger and gather informally

Vote Here				
<input type="radio"/>	<input type="radio"/>	<input type="radio"/>	<input type="radio"/>	<input type="radio"/>
low priority		neutral		high priority

DID WE MISS ANYTHING?

--

OPPORTUNITIES

MOBILITY

WHAT ARE YOUR PRIORITIES?



TRANSIT

Frequent transit service that provides convenient access to the UDistrict and the University.

Vote Here				
<input type="radio"/>	<input type="radio"/>	<input type="radio"/>	<input type="radio"/>	<input type="radio"/>
low priority		neutral		high priority



ACTIVE TRANSPORTATION

A rich network of pathways, trails, and bike facilities can support more active lifestyles.

Vote Here				
<input type="radio"/>	<input type="radio"/>	<input type="radio"/>	<input type="radio"/>	<input type="radio"/>
low priority		neutral		high priority



CONNECTIVITY

Easily connect the UDistrict and campus to adjacent neighbourhoods.

Vote Here				
<input type="radio"/>	<input type="radio"/>	<input type="radio"/>	<input type="radio"/>	<input type="radio"/>
low priority		neutral		high priority

DID WE MISS ANYTHING?

--

OPPORTUNITIES

LAND USE

WHAT ARE YOUR PRIORITIES?



HOUSING

Students, staff, faculty, residents, seniors, business owners and others can all live together in one neighbourhood.

Vote Here				
<input type="radio"/>	<input type="radio"/>	<input type="radio"/>	<input type="radio"/>	<input type="radio"/>
low priority		neutral		high priority



SHOPPING

Shops and services are close to where you live, work, learn and play

Vote Here				
<input type="radio"/>	<input type="radio"/>	<input type="radio"/>	<input type="radio"/>	<input type="radio"/>
low priority		neutral		high priority



ARTS + ENTERTAINMENT

Creating more venues and open spaces to enjoy arts and culture within the UDistrict.

Vote Here				
<input type="radio"/>	<input type="radio"/>	<input type="radio"/>	<input type="radio"/>	<input type="radio"/>
low priority		neutral		high priority

DID WE MISS ANYTHING?

--