

NOTE:
USE PLOT STYLE TABLE:
"Abby - Traffic_Lighting.ctb"

USE SYMBOLS AS SHOWN
USE LEGEND AS SHOWN

- LEGEND**
- PROPOSED ONE PIECE DAVIT STREETLIGHT POLE (9.0m - 150W H.P.S.) IES TYPE 2 MC DIST. FLAT GLASS LUMINAIRE ON A TYPE C CONCRETE BASE (UNLESS OTHERWISE NOTED). REFER TO SHEET 03 FOR DETAILS. (LINEWEIGHT= 0.300 - BLOCK= PD1)
 - PROPOSED MoTi STYLE TWO PIECE DAVIT STREETLIGHT POLE (13.5m - 400W H.P.S.) IES TYPE 2 MC DIST. FLAT GLASS LUMINAIRE ON AN MoTi STYLE TYPE D2 CONCRETE BASE (UNLESS OTHERWISE NOTED). REFER TO SHEET 03 FOR DETAILS. (LINEWEIGHT= 0.300 - BLOCK= PD2)
 - EXISTING DAVIT STREETLIGHT POLE (LINEWEIGHT= 0.300 - BLOCK= LT)
 - PROPOSED ONE PIECE DAVIT STREETLIGHT POLE (8.1m - 150W H.P.S.) IES TYPE 2 MC DIST. FLAT GLASS LUMINAIRE C/W PHOTOCELL AND 60AMP STAINLESS STEEL STREET LIGHTING SERVICE PANEL IN A 0.9m HIGH SERVICE BASE ON A TYPE C1 CONCRETE BASE (LINEWEIGHT= 0.300 - BLOCK= PDP)
 - EXISTING DAVIT STREETLIGHT POLE C/W PHOTOCELL AND SERVICE PANEL (LINEWEIGHT= 0.300 - BLOCK= EDP)
 - PROPOSED CONCRETE JUNCTION BOX (5686) C/W BONDED GALVANIZED STEEL LID LABELED "ELEC" (LINEWEIGHT= 0.500 - BLOCK= JBE - TEXT HEIGHT= 2.500 - STYLE= ARIAL)
 - PROPOSED CONCRETE JUNCTION BOX (NUMBER DENOTES TYPE) C/W BONDED GALVANIZED STEEL LID LABELED "ELEC" (LINEWEIGHT= 0.500 - BLOCK= JBE - TEXT HEIGHT= 2.500 - STYLE= ARIAL)
 - PROPOSED CONCRETE JUNCTION BOX (5686) C/W BONDED GALVANIZED STEEL LID LABELED "CoA COMM" (LINEWEIGHT= 0.500 - BLOCK= JBE - TEXT HEIGHT= 2.500 - STYLE= ARIAL)
 - EXISTING CITY OF ABBOTSFORD TYPE 5686 COMMUNICATIONS JUNCTION BOX (LINEWEIGHT= 0.300 - BLOCK= JB - TEXT HEIGHT= 2.500 - STYLE= ARIAL)
 - LUMINAIRE ON RED PHASE CONDUCTOR (LINEWEIGHT= 0.300 - TEXT HEIGHT= 3.500 - TEXT STYLE= ARIAL)
 - LUMINAIRE ON BLACK PHASE CONDUCTOR (LINEWEIGHT= 0.300 - TEXT HEIGHT= 3.500 - TEXT STYLE= ARIAL)
 - PROPOSED 3 No. 6 RW90 ST. LTG. AND 1 No. 8 RW90 BOND IN 35mm RPVC (LINEWEIGHT= 0.500 - LINETYPE= CONDUIT)
 - PROPOSED 2 No. 6 RW90 ST. LTG. AND 1 No. 8 RW90 BOND IN 35mm RPVC (LINEWEIGHT= 0.500 - LINETYPE= CONDUIT)
 - EXISTING CONDUIT AND CONDUCTORS (LINEWEIGHT= 0.300 - LINETYPE= CONDUIT)
 - PROPOSED 78mm RPVC COMMUNICATIONS CONDUIT (EMPTY) (LINEWEIGHT= 0.500 - LINETYPE= CENTER2)
 - PROPOSED 35mm RPVC STUB OUT (CAP & MARK LOCATION) (LINEWEIGHT= 0.500)
 - PROPOSED 35mm RPVC CONDUIT ONLY (LINEWEIGHT= 0.500 - LINETYPE= AS SHOWN - TEXT STYLE= ROMANS - TEXT HEIGHT= 2.500)
 - EXISTING 53mm RPVC U/G DIP SERVICE CONDUIT C/W 3 No. 6 RW90 FEEDERS (LINEWEIGHT= 0.300 - LINETYPE= AS SHOWN - TEXT STYLE= ROMANS - TEXT HEIGHT= 2.500)
 - EXISTING RPVC COMMUNICATIONS CONDUIT (EMPTY) (LINEWEIGHT= 0.300 - LINETYPE= CENTER2)
 - BC HYDRO POLE (LINEWEIGHT= 0.300 - BLOCK= TPL)

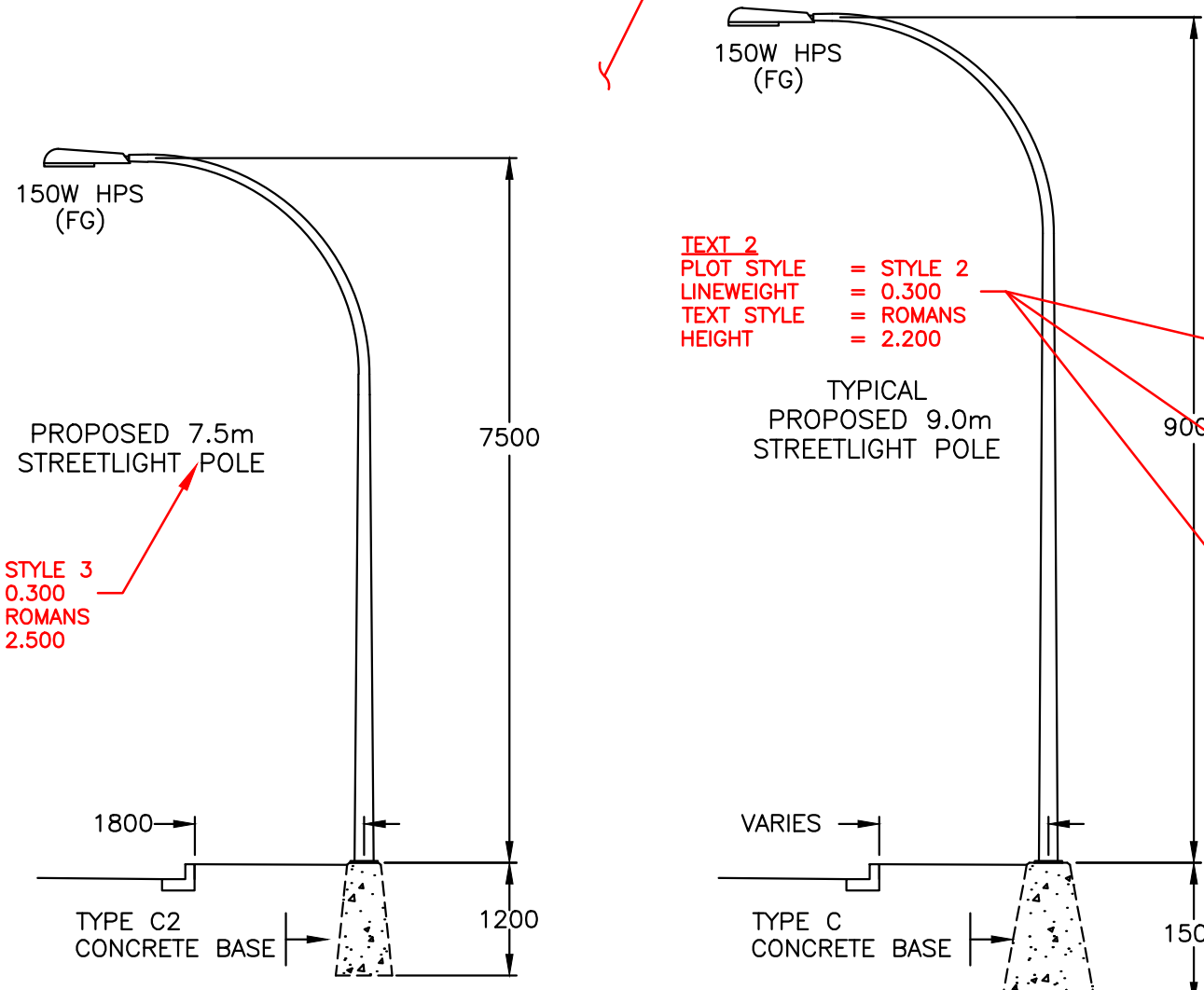
- NOTES**
- ALL WORK SHALL BE CONSTRUCTED IN ACCORDANCE WITH THE 2000 MASTER MUNICIPAL CONSTRUCTION DOCUMENTS AND SPECIFICATIONS, THE CANADIAN ELECTRICAL CODE, AND CITY OF ABBOTSFORD SPECIFICATIONS.
 - ALL CONDUCTORS SHALL BE RW90 XLPE STRANDED COPPER.
 - STAGGER CONNECTIONS IN EACH POLE SO THAT ONE LUMINAIRE CONNECTS TO BLACK PHASE CONDUCTOR AND OTHER TO RED.
 - CONDUCTORS INSIDE POLES SHALL BE NO.12 RW90 UNLESS OTHERWISE NOTED.
 - A TRON HEB SERIES WEATHERPROOF FUSE HOLDER, C/W A 10A BUSS KTK 10 FUSE AND 2 'L' TYPE INSULATING BOOTS, SHALL BE INSTALLED ON EACH LUMINAIRE LIVE CONDUCTOR IN THE HANDHOLE.
 - LUMINAIRES SHALL BE BONDED WITH A NO.12 RW90 BONDING CONDUCTOR FROM THE HANDHOLE OF THE POLE TO THE LUMINAIRE.
 - LUMINAIRES SHALL HAVE FLAT GLASS LENS (GE M250A2 OR EQUIVALENT, WITH FULL CUTOFF OPTICS). LAMP SHALL BE CLEAR HIGH PRESSURE SODIUM, NON-CYCLING TYPE.
 - ALL POLES AND SERVICE BASES SHALL BE GALVANIZED.
 - ALL STREET LIGHTS SHALL BE INSTALLED C/W WIRE SENTRY ANTI-THEFT PLATES.
 - ALL HANDHOLE COVERS SHALL BE A CITY OF ABBOTSFORD APPROVED ANTI-THEFT TYPE. ANTI-THEFT BOLTS SUPPLIED BY THE CITY OF ABBOTSFORD AT CONTRACTOR'S EXPENSE.
 - ALL STREET LIGHTS SHALL BE 1.5M CLEAR OF ALL DRIVEWAYS.
 - SEE BC HYDRO STANDARDS FOR SERVICE CONNECTION DETAILS.
 - CONTRACTOR SHALL ARRANGE FOR EXACT SERVICE LOCATION(S) WITH BC HYDRO PRIOR TO COMMENCING CONSTRUCTION.
 - CONTRACTOR SHALL ADVISE CITY WORKS INSPECTOR A MINIMUM 48-HOURS IN ADVANCE OF INSTALLATION OF CONDUIT AND LAMP STANDARDS.
 - IT IS THE RESPONSIBILITY OF THE CONTRACTOR TO CONFIRM THE ADEQUACY OF THE EXISTING STREETLIGHTING SERVICE, CONDUIT AND CONDUCTORS AND MAKE ALL THE NECESSARY REPAIRS TO ADEQUATELY COMPLETE ALL CONNECTIONS INTO THE EXISTING STREETLIGHTING SYSTEM.

TEXT 2
PLOT STYLE = STYLE 2
LINEWEIGHT = 0.300
TEXT STYLE = ROMANS
TEXT HEIGHT = 2.200

PAGE FRAME
REFER TO PAGE FRAME STANDARDS SHEET

TEXT 4 (TITLE)
PLOT STYLE = STYLE 2
LINEWEIGHT = 0.300
TEXT STYLE = ROMANS
TEXT HEIGHT = 3.500

PROPOSED STREET POLE ELEVATIONS



TEXT 2
PLOT STYLE = STYLE 2
LINEWEIGHT = 0.300
TEXT STYLE = ROMANS
TEXT HEIGHT = 2.200

TEXT 4 (TITLE)
PLOT STYLE = STYLE 2
LINEWEIGHT = 0.300
TEXT STYLE = ROMANS
TEXT HEIGHT = 3.500

- NOTES**
- REFER TO SHEET 03 FOR COMM CONDUIT ENTRY INTO JB DETAIL
 - CONDUIT ROUTING IS DIAGRAMMATIC ONLY. ALL CONDUIT & EQUIPMENT SHALL BE PLACED WITHIN CITY RIGHT OF WAY & AT OFFSET AS NOTED.

STREET LIGHTING DESIGN CRITERIA

ITEM	DESIGN REQUIREMENTS	DESIGN ACHIEVED
STREET NAME(S)	STREET NAME (FROM STA 10+00 TO 14+80)	
PEDESTRIAN ACTIVITY	LOW	
ROAD CLASSIFICATION	ARTERIAL	
ILLUMINATION TYPE	400W H.P.S. (13.5m DAVIT POLE)	
SPACING (MAX)	75.0m ONE SIDED	
ILLUMINANCE LEVEL (AVG.)	9.0 LUX	11.8 LUX
ILLUMINANCE UNIFORMITY RATIO (AVG.:MIN.)	3.0:1	2.6:1
TOTAL LLF (4 YEAR RELAMP INTERVAL)		0.78

OVERHEAD POWER LINE CONFLICTS

CONTRACTOR SHALL CONFIRM ON SITE PRIOR TO CONSTRUCTION THAT POLES & EQUIPMENT WILL MEET WorkSafeBC CLEARANCE REQUIREMENTS FOR OVERHEAD PRIMARY AND SECONDARY LINES. CONTRACTOR TO REPORT ANY CONFLICTS OR DISCREPANCIES TO CONSULTANT.

CHECK BEFORE YOU DIG

CONTRACTOR SHALL REFER TO MUNICIPAL RECORD / CIVIL DESIGN DRAWINGS FOR ALL OTHER UTILITIES, SERVICE LOCATIONS, AND DETAILS. THE EXACT LOCATION OF THESE UTILITIES SHALL BE DETERMINED ON SITE BY THE CONTRACTOR.

GRID NO. XX DISCIPLINE SHEET NO. 1 OF 1 COA DWG. NO.

LOCATION FOR GAS, ELECTRICAL, TEL, & CABLE UTILITIES TO BE VERIFIED

ENGINEER:
COMPANY NAME AND LOGO

NO.	DATE	BY	REVISIONS	TECH. ENG.
4	YEAR MM DD	XX	ISSUED FOR CONSTRUCTION	XX XX
3	YEAR MM DD	XX	ISSUED FOR TENDER	XX XX
2	YEAR MM DD	XX	ISSUED FOR REVIEW	XX XX
1	YEAR MM DD	XX	PRELIMINARY SUBMISSION	XX XX

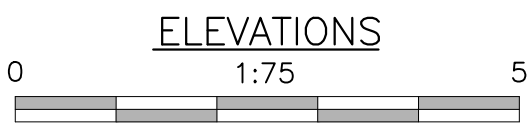
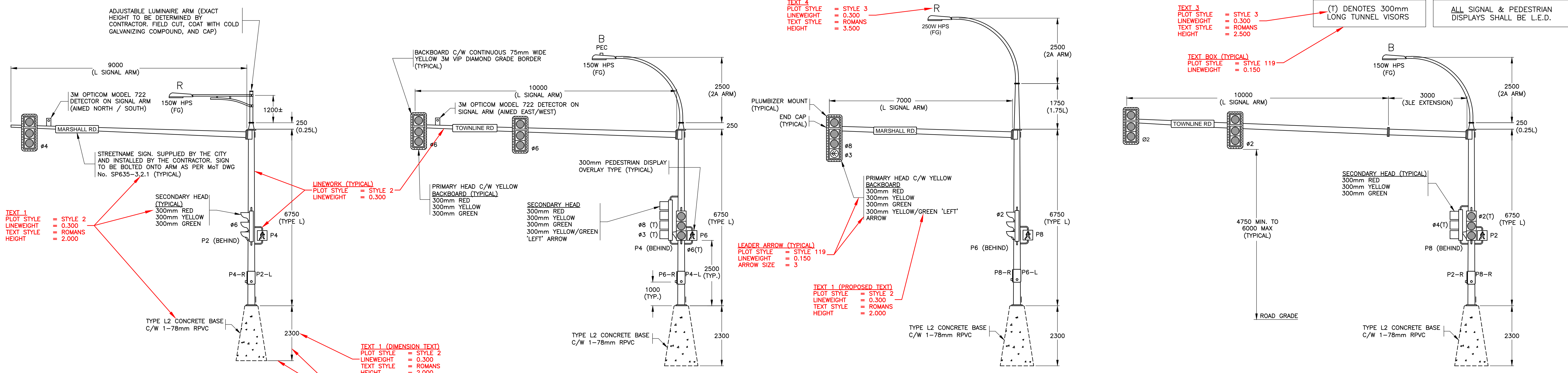
DATE: YEAR MM DD
DRAWN: XX
DESIGN: XX
SCALE HOR. 1 : 500
SCALE VER. -

PROJECT SHEET NUMBERS:
1 OF 3
COA CONTRACT NUMBER:
000000
COA SAP NO.: 0000000



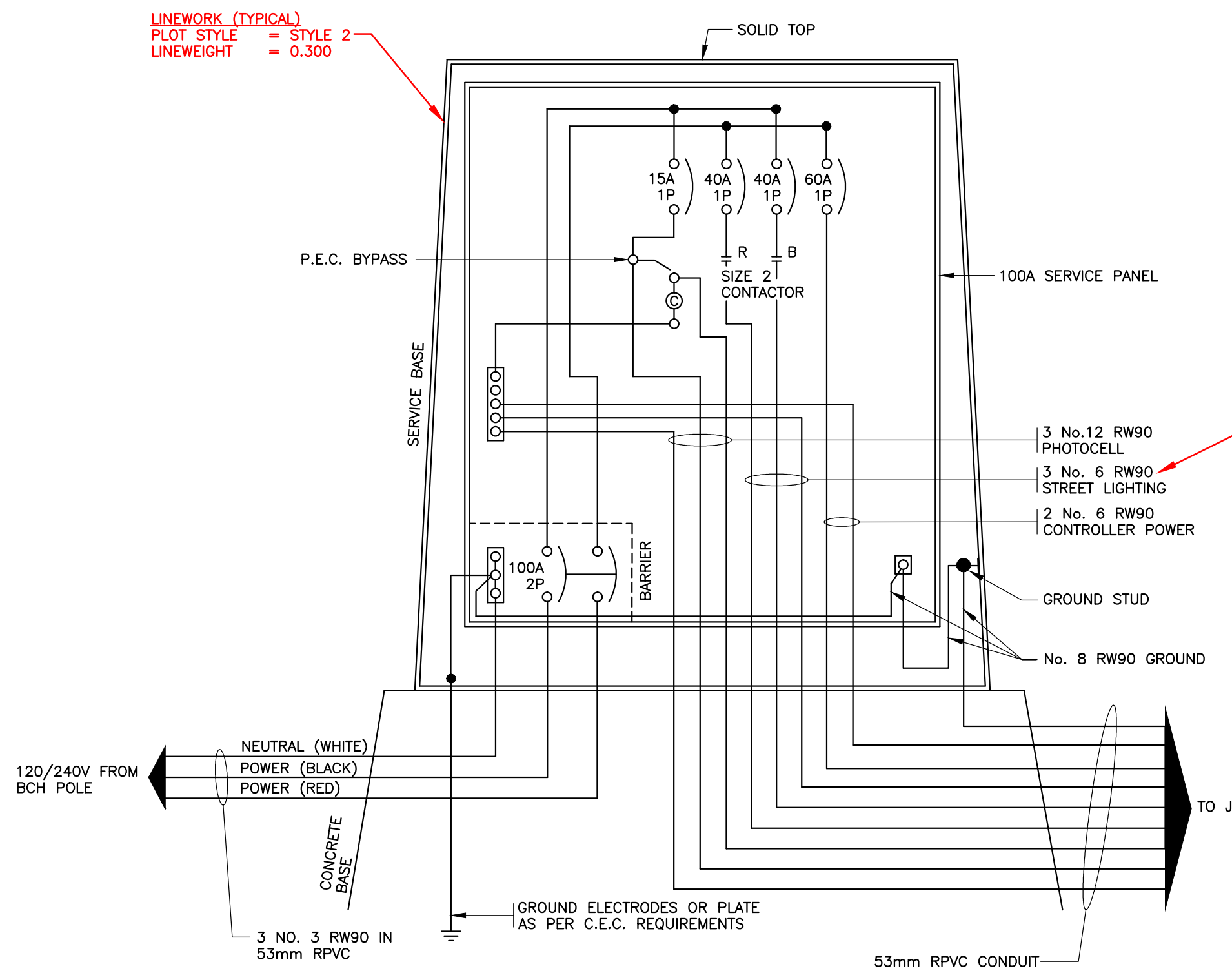
CONSULTANT PROJECT NO.: 0000-00
CONSULTANT DWG. NO.: 01 of 03



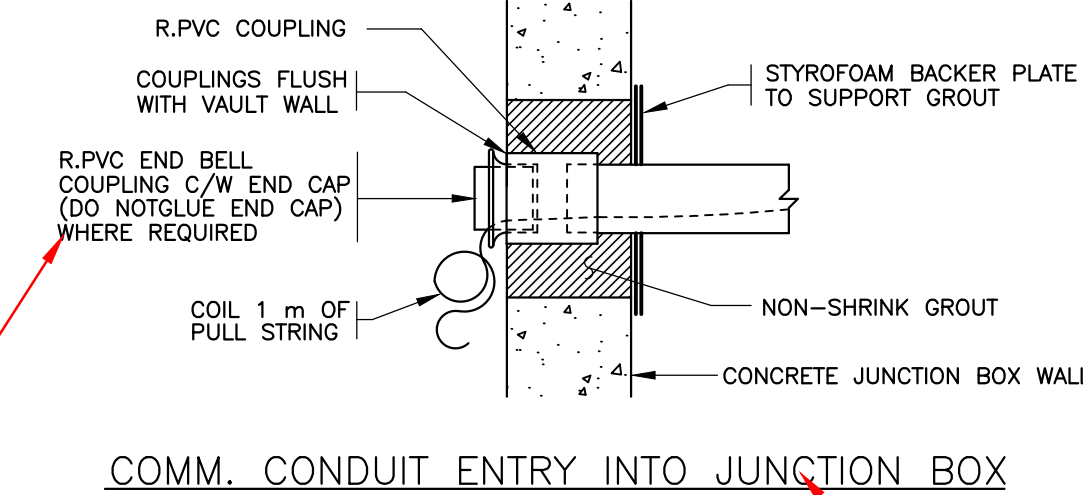


TEXT 1 (DIMENSION TEXT)
PLOT STYLE = STYLE 2
LINEWEIGHT = 0.300
TEXT STYLE = ROMANS
TEXT HEIGHT = 2.000

DIMENSION LINES & ARROWS (TYPICAL)
PLOT STYLE = STYLE 119
LINEWEIGHT = 0.150
ARROW SIZE = 3



NOTE:
USE PLOT STYLE TABLE:
"Abby - Traffic_Lighting.ctb"



DETECTOR LOOP DETAILS						
LOOP			INDUCTANCE			PHASE
LOOP No.	SIZE	TURNS	LOOP LEAD	TOTAL		
L 1	1.8m x 1.8m	4	120	6	126	#2
L 2	1.8m x 1.8m	4	120	6	126	#2
L 3	1.8m x 1.8m	4	120	6	126	#2
L 4	1.8m x 1.8m	4	120	6	126	#2
L 5	1.8m x 1.8m	4	120	26	146	#4
L 6	1.8m x 1.8m	4	120	26	146	#4
L 7	1.8m x 1.8m	4	120	26	146	#4
L 8	1.8m x 1.8m	4	120	26	146	#4
L 9	1.8m x 1.8m	4	120	44	164	#6
L10	1.8m x 1.8m	4	120	44	164	#6
L11	1.8m x 1.8m	4	120	44	164	#6
L12	1.8m x 1.8m	4	120	44	164	#6
L13	1.8m x 1.8m	4	120	22	142	#8
L14	1.8m x 1.8m	4	120	22	142	#8
L15	1.8m x 1.8m	4	120	22	142	#8
L16	1.8m x 1.8m	4	120	22	142	#8
L17	1.8m x 1.8m	4	120			
L18	1.8m x 1.8m	4	120	40	280	#3

- THE CITY OF ABBOTSFORD SHALL SUPPLY THE FOLLOWING MATERIALS FOR INSTALLATION BY THE CONTRACTOR.
- ONE (1) P44-DD STYLE TRAFFIC SIGNAL CONTROLLER CABINET COMPLETE WITH INTERNAL COMPONENTS AND EXTENSION BASE
 - FOUR (4) OVERHEAD STREETNAME SIGNS
 - TWO (2) GTT OPTICOM 722 DETECTORS

RECOGNIZED PRODUCT LIST			
PRODUCT	MANUFACTURER	SPECIFICATION	REMARKS
LUMINAIRES	GENERAL ELECTRIC	M400A	FLAT GLASS (TYPE 3 MCO DIST.) C/W MAG-REG OR CWA BALLAST
HID LAMPS	PHILLIPS	M.o.T.I.	NON-CYCLING
	OSRAM-SYLVANIA	M.o.T.I.	
	GE LIGHTING	M.o.T.I.	
SIGNAL POLES & ANCHOR BOLTS	WEST COAST ENG.	M.o.T.I.	GALVANIZED
	NOVA POLE		
SIGNAL HEADS	ECONOLITE	M.o.T.I.	ALUMINUM, GREEN COLOUR
	EAGLE	M.o.T.I.	
PEDESTRIAN HEADS (1 SECTION)	ECONOLITE	M.o.T.I.	300mm SQUARE OPENING ALUMINUM, GREEN COLOUR
SIGNAL MOUNTING HARDWARE	GREENLITE TRAFFIC	M.o.T.I.	
PUSHBUTTONS	POLARA ENGINEERING	BULLDOG	ROUND STYLE BDL2-GREEN, WITH MOMENTARY LED
L.E.D. DISPLAYS (REDS, GREENS, YELLOWS, YELLOW/GREEN ARROW & WALK/DON'T WALK)	DIALIGHT	M.o.T.I.	CURRENT ITE SPEC.
PUSHBUTTON MOUNTING PLATE	GREENLITE TRAFFIC	GEL-239	BLACK ON WHITE BACKGROUND
JUNCTION BOX	AE CONCRETE	M.M.C.D. / M.o.T.I.	LABELLED "ELEC" / "COMM"
DETECTOR CABLE	TEXCAN	IMSA SPEC 50-2	2 CONDUCTOR-No.16 STRANDED
DETECTOR LOOP TAGS	PANDUIT	MP-250-C	
OPTICOM CABLE	3M	M138 DETECTOR CABLE	
SERVICE PANEL	VALID MANUFACTURING	M.M.C.D.	STAINLESS STEEL REFER TO WIRING DIAGRAM
	WEST COAST ELECTRIC		
SIGNAL CABLE	TEXCAN	CLMTO	STRANDED