



CITY OF ABBOTSFORD

2020 Demographic Profiles



Abbotsford Summary

Aberdeen

Bradner - Mt. Lehman

City Centre

Clayburn

Clearbrook

Fairfield

Hazelwood

Historic Downtown

Immel - McMillan

Marshall - McCallum

Matsqui Prairie

McKee

Peardonville

South Clearbrook

South Poplar

Sumas Mountain

Sumas Prairie

Sumas Way

Townline

UDistrict

West Abbotsford

Whatcom



ABBOTSFORD

Table of Contents

Population	3
Households + Families	4
Income	5
Education + Labour	6
Ethnocultural Diversity	7
Dwellings	9

Sources:

2006, 2011, 2016 Census, and BC Stats
(select data is adjusted based on the Census undercount)

Additional information available:

www.abbotsford.ca/stats

Released:

2020

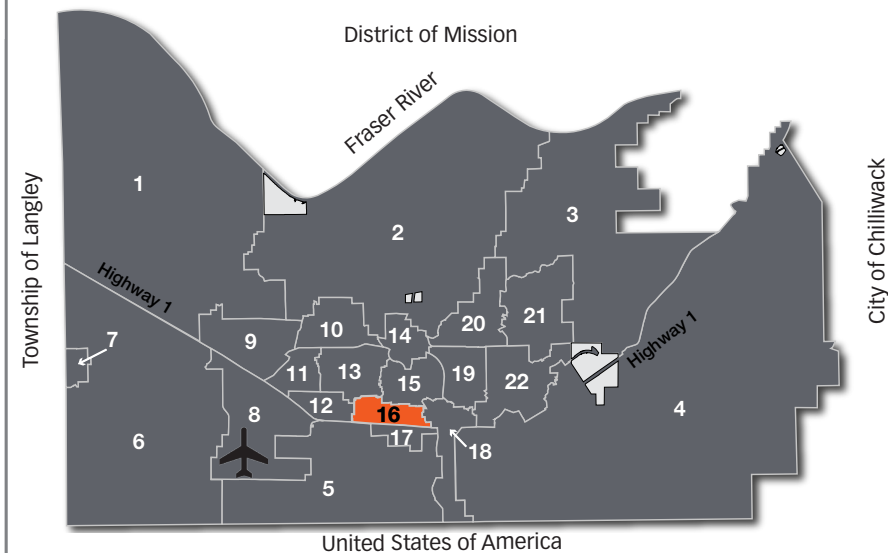
Contact Us

CITY OF ABBOTSFORD

Planning & Development Services
32315 South Fraser Way
Abbotsford, BC V2T 1W7
Tel: 604-864-5510
Email: planning-info@abbotsford.ca

The City of Abbotsford has made an effort to summarize Statistics Canada Census data in an easy to use format for various communities across Abbotsford in these demographic profiles.

While every effort has been made to do so accurately, there may be errors in the data portrayed. Users should understand this possibility, and if an error is found, consider informing the Planning & Development Services department so it can be corrected.

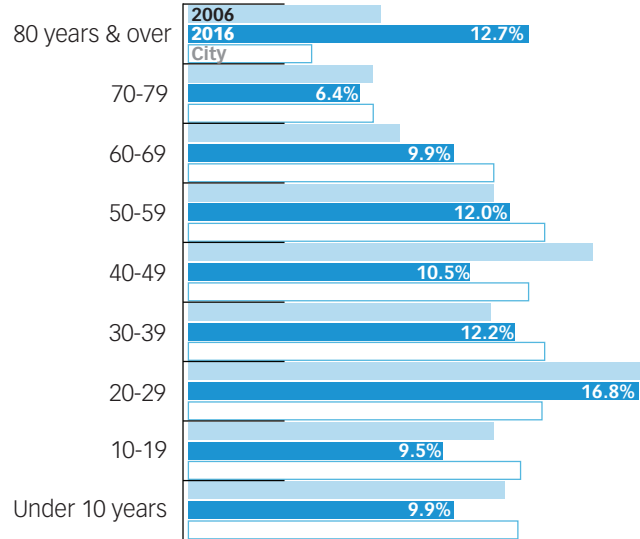


- | | | | |
|-------------------------|----------------------|--------------------------------|----------------------|
| 1. Bradner - Mt. Lehman | 7. West Abbotsford | 13. City Centre | 18. Sumas Way |
| 2. Matsqui Prairie | 8. Peardonville | 14. Hazelwood | 19. Immel - McMillan |
| 3. Sumas Mountain | 9. Townline | 15. Historic Downtown | 20. Clayburn |
| 4. Sumas Prairie | 10. Fairfield | 16. Marshall - McCallum | 21. McKee |
| 5. South Poplar | 11. Clearbrook | 17. UDistrict | 22. Whatcom |
| 6. Aberdeen | 12. South Clearbrook | | |



Population

Age Distribution



24.0%

of residents are seniors
(17.3% in 2006)
(16.9% in the City)

14.2%

of residents are children
(16.7% in 2006)
(18.4% in the City)

Median Age

	2011	2016
Marshall - McCallum	41.3	41.5
Abbotsford	37.9	39.0

Growth History

Year	Population*	Growth
2006	8,200	n/a
2011	8,500	3.7%
2016	9,200	8.2%

* includes Census undercount adjustment

Households + Families

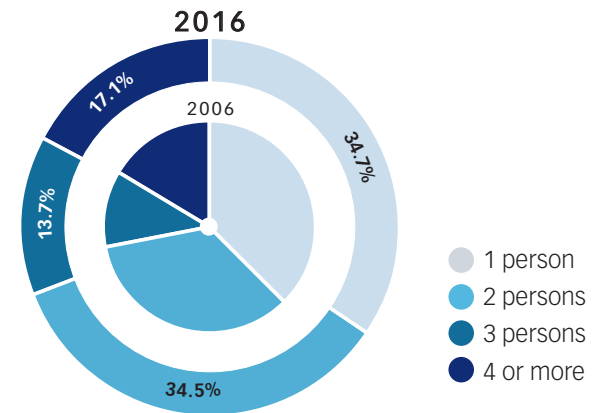
Persons per Household



2.8

persons per household
in the City

Household Size



Family Structure

	2006	2016	City
Two-parent families	76.2%	74.7%	85.7%
Married	79.0%	79.9%	89.8%
Common-law	21.4%	20.4%	10.2%
With children	44.5%	46.5%	53.8%
Without children	55.9%	53.8%	46.2%
Single-parent families	23.8%	25.3%	14.3%
Female	77.3%	84.5%	79.0%
Male	21.6%	15.5%	21.0%

Income

Individual Income

\$28,028

median individual income
(\$21,346 in 2006)
(\$29,741 in the City)

	2006	2016	City
Under \$10,000	19.4%	16.0%	14.9%
\$10,000-\$19,999	28.3%	21.5%	20.2%
\$20,000-\$29,999	19.0%	15.2%	15.2%
\$30,000-\$39,999	11.4%	14.9%	12.1%
\$40,000-\$49,999	9.5%	11.8%	9.8%
\$50,000-\$59,999	5.2%	6.6%	7.5%
\$60,000-\$69,999	7.3%	4.5%	5.4%
\$70,000-\$79,999	inc. above	2.7%	4.2%
\$80,000 and over	inc. above	7.2%	10.7%

Household Income

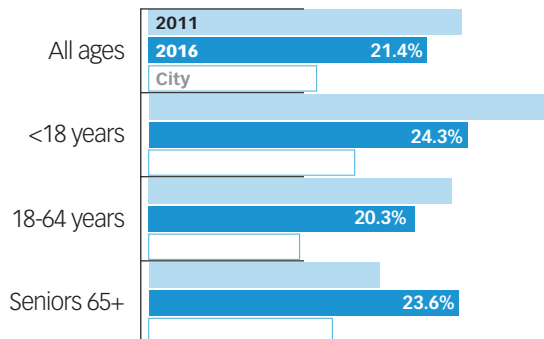
\$50,548

median household income
(\$38,660 in 2006)
(\$72,511 in the City)

	2006	2016	City
Under \$20,000	23.7%	16.1%	8.7%
\$20,000-\$39,999	27.0%	22.3%	16.0%
\$40,000-\$59,999	20.9%	19.6%	15.9%
\$60,000-\$79,999	11.9%	13.7%	14.6%
\$80,000-\$99,999	8.6%	11.4%	12.4%
\$100,000-\$124,999	7.7%	7.2%	11.6%
\$125,000 and over	inc. above	9.5%	20.8%

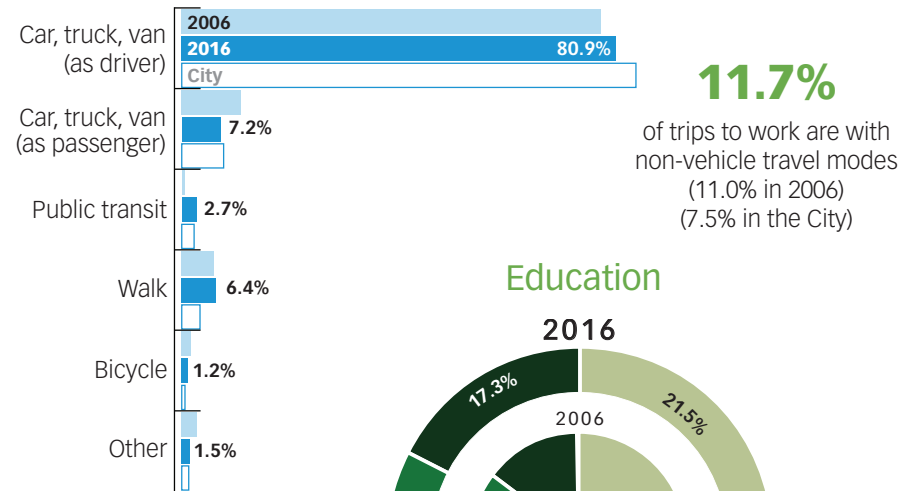
Low Income

(Percent is of each category (e.g. "all ages") according to Statistics Canada's after tax low income measure (50% of median adjusted household income.)



Education + Labour

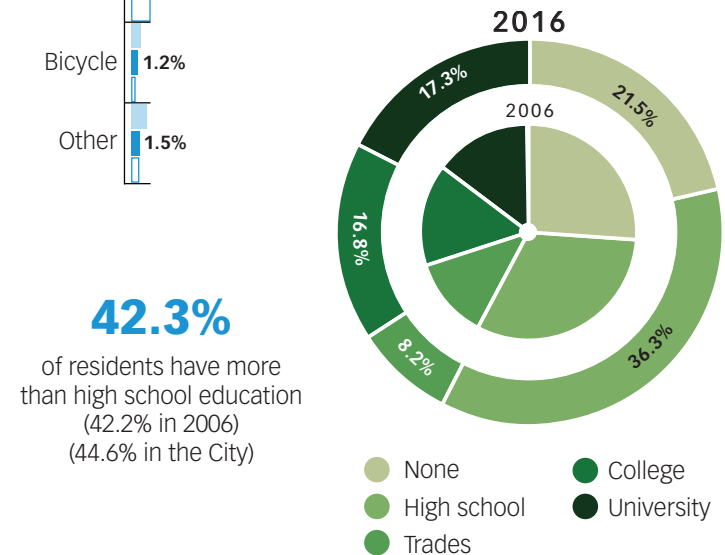
Travel to Work



11.7%

of trips to work are with non-vehicle travel modes
(11.0% in 2006)
(7.5% in the City)

Education



42.3%
of residents have more than high school education
(42.2% in 2006)
(44.6% in the City)

- None
- High school
- Trades
- College
- University

Occupations

	2006	2016	City
Health care and social assistance	9.8%	12.8%	9.9%
Manufacturing	14.8%	11.6%	10.0%
Retail Trade	11.7%	11.6%	10.8%
Construction	10.4%	10.2%	9.7%
Accommodation and food services	7.7%	7.6%	7.1%

Ethnocultural Diversity

Ethnicity

	2006	2016	City
English	32.9%	25.9%	21.9%
Canadian	20.3%	23.8%	18.8%
Scottish	23.3%	19.6%	19.2%
German	20.3%	18.5%	15.7%
Irish	18.6%	16.3%	11.8%
French	13.5%	10.6%	9.9%
Dutch	10.6%	9.0%	7.4%
East Indian	4.2%	7.6%	5.2%
Ukrainian	6.4%	6.2%	5.1%
Russian	3.8%	4.0%	4.7%

* includes single and multiple responses

21.8%

of residents are visible minorities (15.2% in 2006) (33.7% in the City)

25.4%

of residents know a non-official language (38.2% in the City)

1.6%

of residents do not know either English or French (2.1% in 2006) (5.7% in the City)

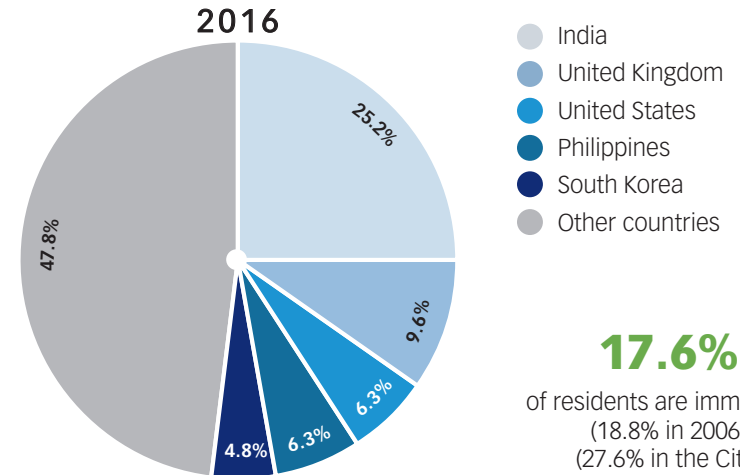
Knowledge of Non-Official Languages

(as a percent of residents who know a non-official language)

	2016	City
Punjabi	31.4%	61.0%
German	8.8%	9.3%
Arabic	8.2%	1.1%
Mandarin	8.0%	2.5%
Spanish	7.2%	4.7%

Ethnocultural Diversity

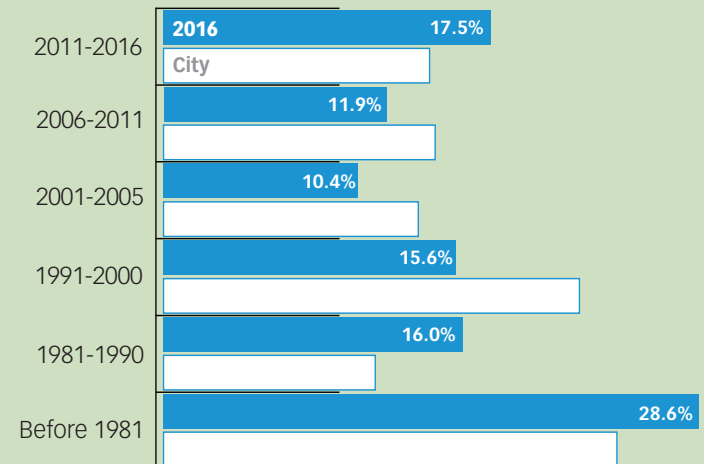
Immigrants by Place of Birth



17.6%

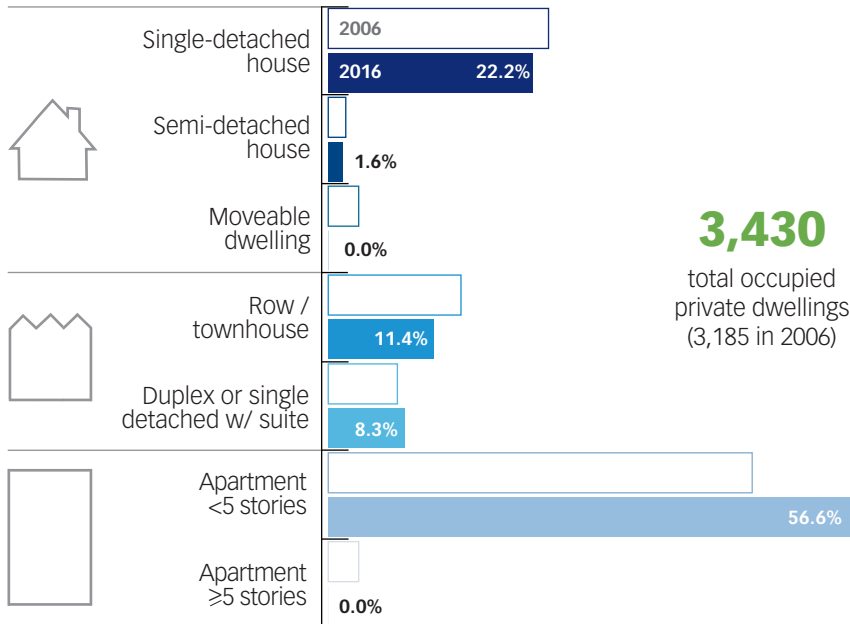
of residents are immigrants (18.8% in 2006) (27.6% in the City)

Immigrants by Period of Immigration



Dwellings

Housing Types



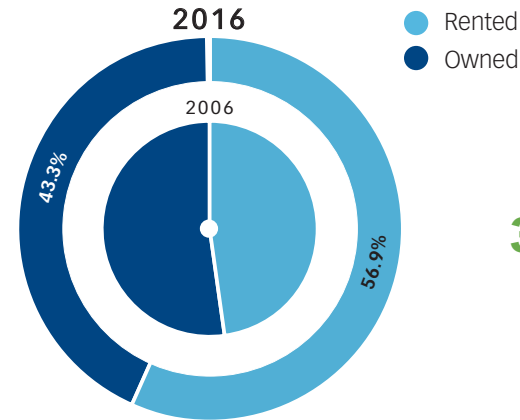
Construction Period

	2006	2016	City
Before 1960	10.2%	9.2%	5.5%
1961-1980	52.0%	41.6%	27.1%
1981-1990	16.3%	16.5%	22.9%
1991-2000	13.8%	12.3%	23.4%
2001-2010	7.5%*	15.3%	16.0%
2011-2016	n/a	5.4%	5.1%

* Includes 2001-2006 only

Dwellings

Tenure



30.5% | 69.5%
percent rented / owned in the City

Rented Dwellings

Average rent: **\$953 / month** (\$740 in 2006)

Spending ≥30%: **42.5%** (45.3% in 2006)

Owned Dwellings

Average payments: **\$1,099 / month** (\$884 in 2006)

Spending ≥30%: **20.3%** (20.9% in 2006)

Average Value

\$234,184
2006

\$348,007
2016

\$516,858
City



Prepared by:

Planning & Development Services
32315 South Fraser Way
Abbotsford, BC V2T 1W7
604-864-5510

planning-info@abbotsford.ca