



CITY OF ABBOTSFORD

# 2020 Demographic Profiles



Abbotsford Summary

Aberdeen

Bradner - Mt. Lehman

City Centre

Clayburn

Clearbrook

Fairfield

**Hazelwood**

Historic Downtown

Immel - McMillan

Matsqui Prairie

Marshall - McCallum

McKee

Peardonville

South Clearbrook

South Poplar

Sumas Mountain

Sumas Prairie

Sumas Way

Townline

UDistrict

West Abbotsford

Whatcom



ABBOTSFORD

# Table of Contents

Population	3
Households + Diversity	4
Dwellings	5
Education + Labour	6

*Note: Due to limited population, Hazelwood has had some data suppression applied, which results in less information being presentable.*

## Sources:

2006, 2011, 2016 Census, and BC Stats  
(select data is adjusted based on the Census undercount)

## Additional information available:

[www.abbotsford.ca/stats](http://www.abbotsford.ca/stats)

## Released:

2020

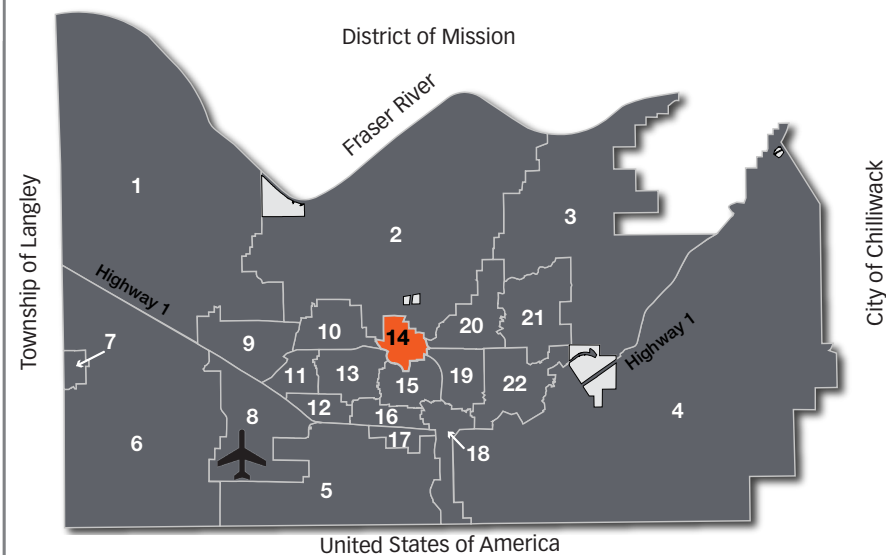
## Contact Us

### CITY OF ABBOTSFORD

Planning & Development Services  
32315 South Fraser Way  
Abbotsford, BC V2T 1W7  
Tel: 604-864-5510  
Email: [planning-info@abbotsford.ca](mailto:planning-info@abbotsford.ca)

The City of Abbotsford has made an effort to summarize Statistics Canada Census data in an easy to use format for various communities across Abbotsford in these demographic profiles.

While every effort has been made to do so accurately, there may be errors in the data portrayed. Users should understand this possibility, and if an error is found, consider informing the Planning & Development Services department so it can be corrected.

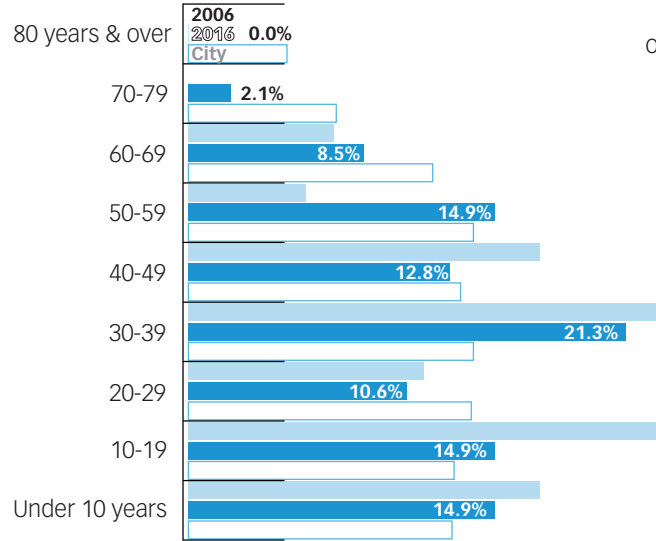


- |                         |                      |                         |                      |
|-------------------------|----------------------|-------------------------|----------------------|
| 1. Bradner - Mt. Lehman | 7. West Abbotsford   | 13. City Centre         | 18. Sumas Way        |
| 2. Matsqui Prairie      | 8. Peardonville      | <b>14. Hazelwood</b>    | 19. Immel - McMillan |
| 3. Sumas Mountain       | 9. Townline          | 15. Historic Downtown   | 20. Clayburn         |
| 4. Sumas Prairie        | 10. Fairfield        | 16. Marshall - McCallum | 21. McKee            |
| 5. South Poplar         | 11. Clearbrook       | 17. UDistrict           | 22. Whatcom          |
| 6. Aberdeen             | 12. South Clearbrook |                         |                      |



# Population

## Age Distribution



**8.2%**

of residents are seniors  
(2.8% in 2006)  
(16.9% in the City)

**20.4%**

of residents are children  
(27.8% in 2006)  
(18.4% in the City)

## Median Age

	2011	2016
Hazelwood	36.2	34.5
Abbotsford	37.9	39.0

## Growth History

Year	Population*	Growth
2006	250	n/a
2011	250	0%
2016	250	0%

\* includes Census undercount adjustment

# Households + Diversity

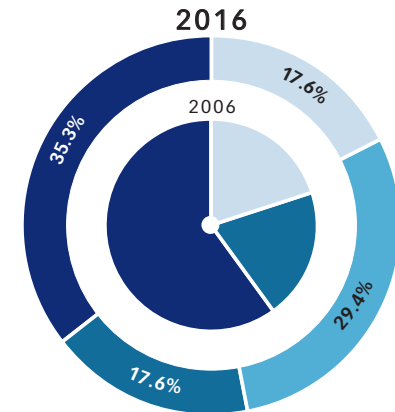
## Persons per Household



**2.8**

persons per household  
in the City

## Household Size



- 1 person
- 2 persons
- 3 persons
- 4 or more

## Ethnicity

	2006	2016	City
Canadian	12.7%	48.8%	18.8%
German	31.0%	22.0%	19.2%
English	15.5%	17.1%	21.9%
French	19.7%	17.1%	7.4%
Aboriginal	4.2%	12.2%	5.2%
Polish	2.8%	12.2%	3.2%
Scottish	42.3%	9.8%	15.7%
Irish	26.8%	7.3%	11.8%
Dutch	2.8%	7.3%	9.9%
Chinese	0.0%	4.9%	2.1%

**4.9%**

of residents are visible minorities  
(8.3% in 2006)  
(33.7% in the City)

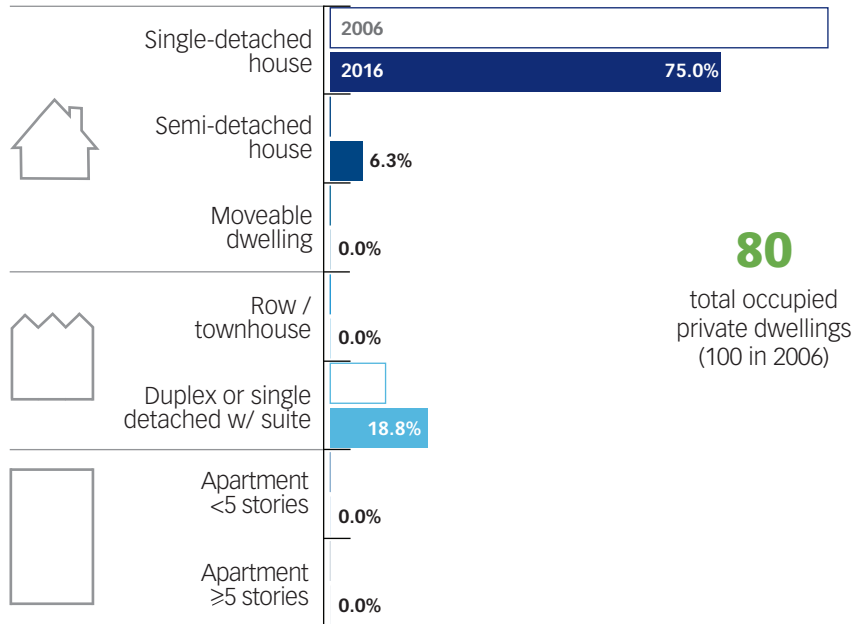
**9.8%**

of residents are immigrants  
(12.7% in 2006)  
(27.6% in the City)

\* includes single and multiple responses

# Dwellings

## Housing Types



**80**

total occupied private dwellings (100 in 2006)

## Construction Period

	2006	2016	City
Before 1960	40.0%	33.3%	5.5%
1961-1980	40.0%	40.0%	27.1%
1981-1990	25.0%	13.3%	22.9%
1991-2000	10.0%	13.3%	23.4%
2001-2010	0.0%*	0.0%	16.0%
2011-2016	n/a	0.0%	5.1%

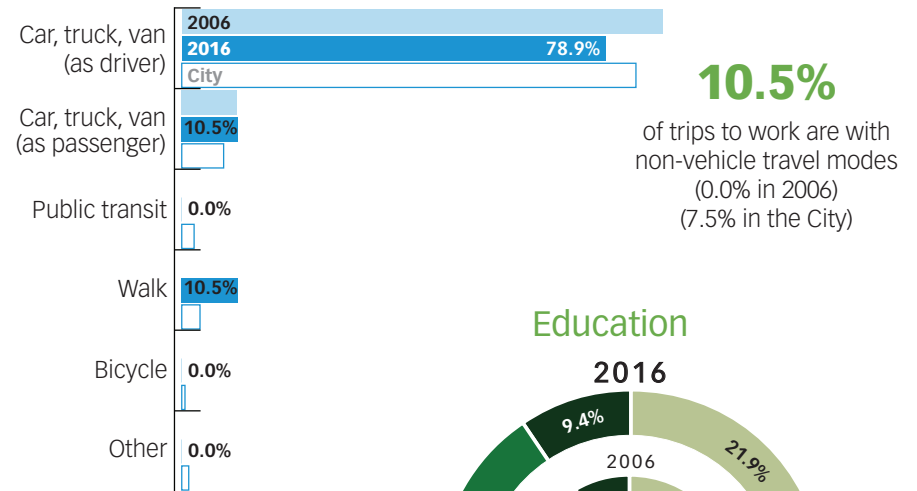
\* Includes 2001-2006 only

## Average Value

N/A 2006	\$433,344 2016	\$516,858 City
-------------	-------------------	-------------------

# Education + Labour

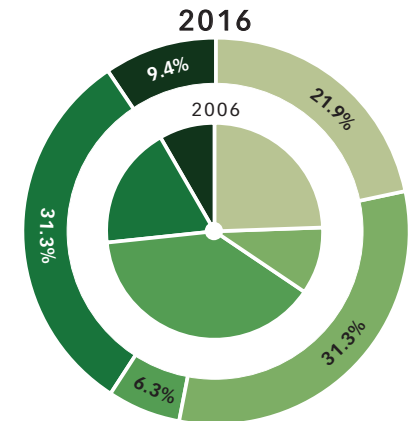
## Travel to Work



**10.5%**

of trips to work are with non-vehicle travel modes (0.0% in 2006) (7.5% in the City)

## Education



**46.9%**

of residents have more than high school education (65.3% in 2006) (44.6% in the City)

- None
- High school
- Trades
- College
- University

## Occupations

	2006	2016	City
Health care and social assistance	16.2%	16.7%	9.9%
Retail Trade	5.4%	16.7%	10.8%
Manufacturing	16.2%	12.5%	10.0%
Other Services	18.9%	12.5%	5.5%
Construction	5.4%	8.3%	9.7%



Prepared by:

Planning & Development Services  
32315 South Fraser Way  
Abbotsford, BC V2T 1W7  
604-864-5510

[planning-info@abbotsford.ca](mailto:planning-info@abbotsford.ca)