

MESSAGE FROM THE MAYOR



The weather sure kept us on our toes over the last twelve months. Starting with last June's heat dome, November's record rainfall and flooding event and then January's ice storms and sub-zero cold snaps, we've encountered nearly every kind of extreme weather in the

Fraser Valley this past year. As we are currently experiencing an unseasonably cool spring, delayed snowmelt and increased precipitation, we've turned our attention to the Fraser River and trying our best to mitigate the risks that go along with the annual freshet.

Protecting our residents and City infrastructure has never been so top of mind, and so I'm thankful City staff were able to put together long-term flood mitigation options and get them out to the community for feedback so quickly.

Throughout the engagement period, hundreds of residents, farmers and business owners came out to information sessions, completed surveys and submitted emails with their thoughts, suggestions and concerns about the four draft options and what was important to them in terms of flood mitigation. Based on that feedback, and additional technical analysis, staff developed a new preferred option to present to Council for consideration. The preferred option is essentially a hybrid concept, combining key infrastructure enhancements of Options 2, 3 and 4, designed to meet the top priorities identified by Abbotsford residents during the engagement process.

Staff provided City Council with a detailed presentation of this new preferred option, along with the full findings from the engagement process, on June 13, 2022. You can view the presentation at www.letstalkabbotsford.ca/floodresponse.

Council approved the preferred option as presented and supported the first phase of a multi-year phasing program for its implementation, which starts with building a new pump station on the Sumas River. Throughout the public engagement sessions, the addition of a new Sumas River Pump Station was consistently stated as needed and desired. Staff will now prepare a funding request to submit to the Province of BC in order to get this process started.

Since my last update, infrastructure recovery efforts have focused on ditch cleaning and bank stabilization repairs in Sumas Prairie and work continues on the remediation of the damaged parks. We decommissioned the Temporary Transfer Station on Riverside Road and moved operations to the GFL site on Vye Road where disposal remains free for residents affected by the flooding in Sumas Prairie. City staff are engaged with the province to work on expediting the Disaster Financial Assistance Program process, which will fund the repairs to remaining sites in the City. Of the approximately 300 damaged sites across Abbotsford, 192 have been fully repaired.

City staff are now focusing on sediment removal and bank repair assessments for Clayburn Creek, and engineering/geotechnical assessments and

repair designs for damaged bridges, the main dyke breach and multiple landslide sites.

While the recovery infrastructure repairs have been steady, and a preferred long-term flood mitigation plan has been identified, our work is still far from over. In fact, the bulk of the work has yet to begin.

Following the submission of the funding request, the next steps in this journey involve creating a more detailed plan to articulate the specifics of the scope of work, including where infrastructure will be built, as well as ongoing engagement with First Nations, residents, businesses and stakeholders.

I have already spoken with Premier Horgan and Minister Farnworth about our needs going forward, and even though I am not seeking reelection this fall, I remain committed to advocating for Abbotsford to receive funding required for this critical infrastructure. Though we are currently in a better position than we were last November, we certainly don't want a repeat of that devastating event. We will keep working and keep pushing to keep Abbotsford top of mind in both senior levels of government to support our city, residents and farmers get the protection needed to preserve our City, our agriculture lands, and the province's food security.

Henry Braun
Mayor

INFRASTRUCTURE RECOVERY: CURRENT FOCUS



CLAYBURN CREEK

Sediment removal has occurred three times and engineers are now completing an assessment of the needed repairs to the banks.



BRIDGE REPAIRS

Assessments by bridge engineers are being completed and identified repairs will be put out for tender soon.



MAIN DYKE BREECH

Geotechnical assessment complete, working on design and approvals for Repair in September/October.



AUGUSTON SEWER ACCESS ROAD

Geotechnical assessment complete on the 14 landslides on this segment of road off Straiton Road. A scope of work for repairs is being developed for an upcoming tender.



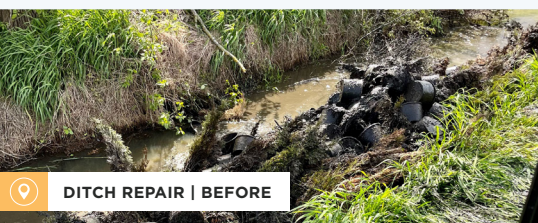
OLD YALE ROAD (MAJUBA HILL) LANDSLIDE

Geotechnical assessment underway by engineers and a scope of work for repair will be prepared for tender soon.



NORRISH CREEK FOREST SERVICE ROAD 2.2KM

Geotechnical design 95% complete for emergency repairs. Construction should begin soon.



DITCH REPAIR | BEFORE



DURING



AFTER

LONG-TERM FLOOD MITIGATION PLAN PREFERRED OPTION PRESENTATION TO COUNCIL

VIEW THE PRESENTATION ONLINE

letstalkabbotsford.ca/abbotsfordfloodresponse

The preferred option is a hybrid concept, combining some of the key infrastructure enhancements and flood-mitigation concepts originally identified in Options 2, 3 and 4; and focuses on enhancing the City's existing flood protection system while maximizing agricultural land and food security, and minimizing the number of impacted properties.

SURVEYS

- 330 surveys completed
- 142 Sumas Prairie specific surveys
- 188 Abbotsford-wide surveys



INFORMATION SESSIONS

- 3 Sumas Prairie Public Information Sessions
- 310 total session attendees
- 151 total unique comments collected



FEEDBACK

- 15 total feedback emails received



MEETINGS

- 14 total meetings held



PARTICIPANTS

- 429 total meeting participants



STILL TO COME

- Removal of the temporary sandbags throughout the City.
- Continue to assess damages and develop a flood recovery work plan for Clayburn Creek and Sumas Prairie.
- Review survey work in the Sumas River and the Sumas Lake Bottom Canal to estimate the volume of sediment accumulation for removal.